



The New Woodend Star

The Traders of Woodend thank you for shopping locally and supporting your local economy and local employment.
Xmas 2024

Merry Christmas & Happy Holidays!



From the team at Macedon Ranges Signs

We will be closing on Friday 20nd December and re-opening Monday 13th January.



We wish our customers a very Merry Christmas and a Happy New Year!



BLACK FOREST MEATS

5427 2350
Place your Christmas orders now!

THANK YOU TO OUR AMAZING COMMUNITY FOR YOUR SUPPORT THIS YEAR!



THE VICTORIA HOTEL

WISHING YOU THE MOST WONDERFUL 2025.

WOODEND NEWSAGENCY
wishes all their customers a Merry Christmas and a safe and happy New Year!

Closed on Christmas Day



5427 2411 | woodendnewsagency@gmail.com

Wishing everyone a joyous Christmas and a happy New Year!

Bradley's
Curtains+Blinds PL

72 High Street, Woodend | 5427 2361

Wishing everyone a joyful Festive Season and a fantastic 2024



Woodend Building Design
3/93 High St | 035427 4272



Woodend General

Merry Christmas Woodend!
We hope you have a Happy Festive Season celebrating with your loved ones.

Thank you for all your support throughout 2024.

Wishing you a fabulous New Year!
Lou, Ange, Anna, Georgie, Mandy, Ally & Kate. x

May your Christmas be happy, safe & delicious.

Thank you for all your support during 2024,
Melissa, Gail, Anita, Bel, Kate, Lily & Catherine.



All your certified organic Christmas baking needs are in store now.

The team at Woodend Wholefoods wish you a healthy festive season.



Woodend Wholefoods

81F HIGH ST WOODEND | T 03 5427 4406 | Q WOODENDWHOLEFOODS.COM.AU



The New Woodend Star

Local veteran's story soon to be told

A Woodend resident is among thirty-eight veterans featured in a collection of military stories being released this month.

In *Never Forgotten – Honouring our Veterans*, author Dave Morgan, himself a Vietnam veteran, shares stories through his lens of the battlefield, covering the Vietnam War to Somalia, East Timor and Afghanistan, exploring “the often-overlooked sacrifices of Australian military personnel”.

One of these is Woodender of the past three and a half years, Warren Gilliland. Born in Bacchus Marsh and raised in Melton, Warren enlisted in the military following the example of his father and an uncle, and after realising that Melton's main industry back then, hay farming, “wasn't the right future” for him.

Warren served in Malaysia and Vietnam in the late 1960s with the 8 RAR (Eighth Battalion, Royal Australian Regiment), leaving only when operations were being scaled down at the end of the Vietnam War. After Vietnam, he trained for and joined the Royal Australian Army Service Corps, and drove semi-trailers for the 85 Transport Platoon in New South Wales before leaving the army in 1973.

Warren returned to civilian life; he'd begun to set things in motion by studying the first of four years in a health building surveyor's course while in his last year in the Army. He worked for a dairy industry body and a city council in Sydney. In the late-1980s, however, Warren experienced a breakdown, and after leaving his marriage, found himself back in Melton, unsure of what was next. He was brought on to work in his brother and cousin's engineering business, where he had the opportunity to work on the Westgate Bridge, and the large tunnels beneath it, the Bolte Bridge towers, and the 39 red poles at the Melbourne International Gateway.

Warren eventually had to quit work, having been suffering from post-traumatic stress disorder (PTSD) for some time. He applied for a veteran's pension through the Department of Veterans' Affairs, thanks, he says, to the encouragement that he received from his mates from 8 RAR, with whom he'd been reconnecting in recent years.

Warren is now enjoying his retirement in Woodend, and says he enjoys the town's friendly, quiet country feel, as well as its bakeries, and caravanning with his partner Joy and local retired friends.

Never Forgotten – Honouring our Veterans is due for release this month, and all proceeds from sales will be donated to Legacy Australia.

This article has been adapted by The New Woodend Star from interview notes kindly shared by Dave Morgan, author of Never Forgotten - Honouring our Veterans.

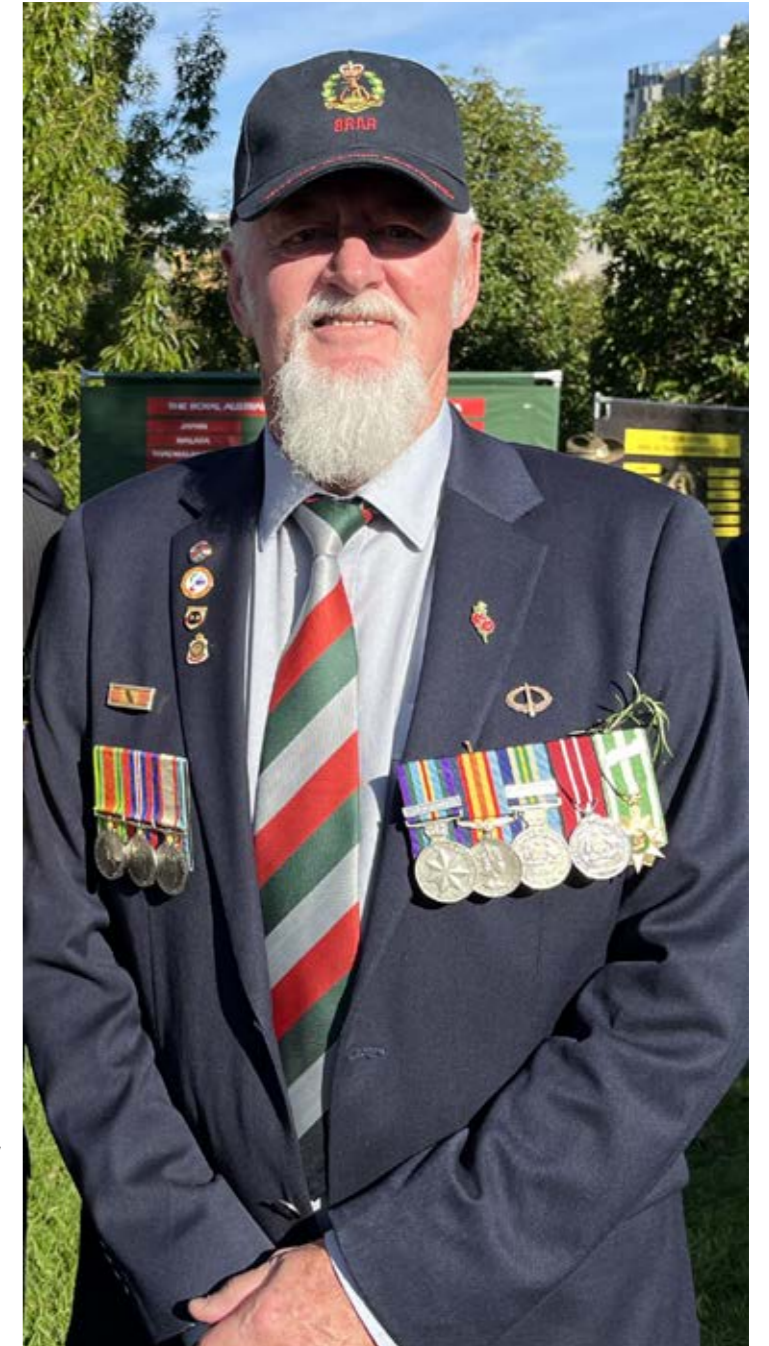


Photo: Warren Gilliland

We honour the extraordinary spirit of our community and wish everyone peace, hope and joy this Christmas.

natural grace

JS Law
Barristers & Solicitors

We wish our clients a joyous Christmas & Happy New Year.

5444 1181 | admin@jslaw.com.au | www.jslaw.com.au

Merry Christmas AND HAPPY NEW YEAR

WOODEND & KYNETON

osteo
& REHAB

WOODEND CHARCOAL CHICKEN AND SALAD BAR

Wishing our customers a safe and happy festive season.

PUT YOUR CHRISTMAS ORDERS IN NOW

RT Edgar

Season's Greetings and Happy New Year from the Directors and staff at RT Edgar

coles

Wishing everyone a Merry Christmas and a happy new year from all the team at Coles Woodend.

Keatings
Real Estate

Wishing all a very Merry Christmas and a safe and Happy New Year

Wildlife Shelters Op Shop

Wishing the Macedon Ranges community, wildlife shelters, carers and staff a very Merry Christmas.

Thank you for your amazing support this past year

Wishing all a very Merry Christmas and a prosperous New Year

Smash Repairs

29 Brooke Street Woodend 5427 1470

Thank you for trusting us with your furry friends!

Wishing you a purr-fect Christmas and a tail-wagging New Year!
Greencross Vets Macedon Ranges

Greencross Vets

"Unforgettable you will remember their stories"

NEVER FORGOTTEN
Honouring our Veterans
Dave Morgan

NEVER FORGOTTEN
Honouring our Veterans
Dave Morgan

BIG SKY PUBLISHING

PUBLISHER
The Rotary Club of Woodend
 ABN 32 685 225 No. A0021518E
 PO Box 333 Woodend 3442
 Published monthly (except January).
 Distributing 4,100 free copies across
 Woodend 3442 postal district.

CONTRIBUTE ARTICLES
 First read our editorial policy on
www.newwoodendstar.com. Please
 submit your story [with pictures, if you
 have them] by email to content@newwoodendstar.org.au.
 The cut-off date for copy is the 15th of each
 month, preceding publication.

BOOK YOUR ADVERTISING
www.newwoodendstar.com

Advertising Rates plus GST

Size	Width x Height	Cost
Trade services	60 x 40mm	\$50
Classified	90 x 40mm	\$50
Eighth page (Bus Card)	90 x 55mm	\$71
Quarter page V	90 x 134mm	\$142
Quarter page H	190 x 55mm	\$142
Strip	190 x 100	\$220
Half page V	90 x 270 mm	\$263
Half page H	190 x 134mm	\$263
Full page	190 x 277mm	\$435

READ CURRENT + BACK ISSUES
www.newwoodendstar.com/view

CONTACT US

content@newwoodendstar.org.au
 0458 525 671, 10-3 Mon-Fri
accounts@newwoodendstar.org.au
 Questions? Email preferred

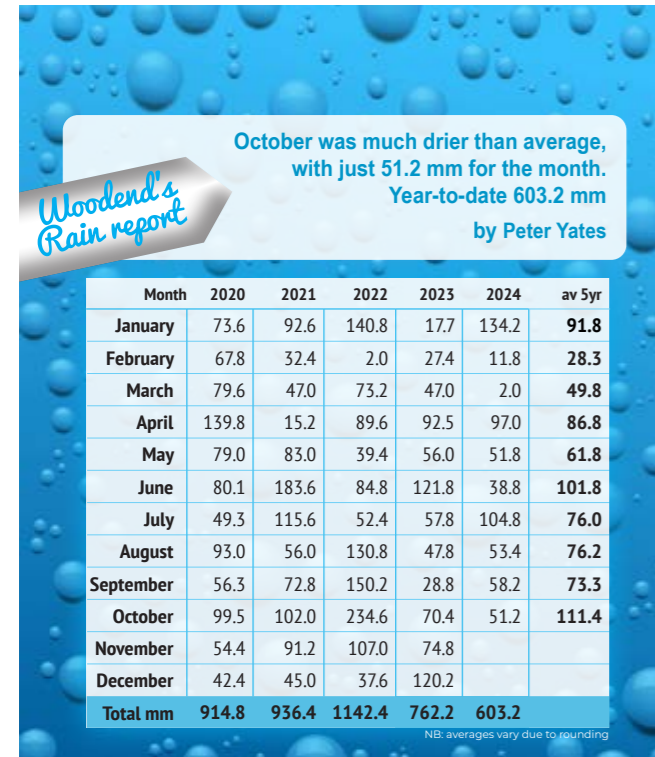
MANAGEMENT COMMITTEE
 Adriaan Adolph (Chair)
 Deidre Willmott (Vice Chair)
 Dr Elaine Saunders (Secretary)
 Jane Watters (Treasurer)
 Kellie Flanagan (Copyeditor)
 Josephine Falzarano (Editor)
 Terry Longton (Distribution)
 Kelly Griffiths (Social Media)

DISCLAIMER
 Articles and comments published in this
 newspaper are the result of contributions
 and relevant news articles pertinent to the
 Woodend district. No person from the Rotary
 Club of Woodend Inc., The New Woodend
 Star or the editorial team is liable for any
 mistakes, omissions, or misprints. They make
 no representation of any description as to the
 truth or accuracy of any statement contained
 herein and accept no liability for any loss
 suffered by any person who relies on any
 statement contained herein. The committee
 reserves the right to omit, reject, cut, alter
 or otherwise re-work submitted articles and
 photos to make them suitable.
 Persons or organisations submitting material
 for publication in *The New Woodend Star* do
 so on the condition that *The New Woodend
 Star* has the right to reproduce this material in
 any format. The opinions expressed are not
 necessarily those of the editorial team, or The
 Rotary Club of Woodend. Submission does
 not guarantee publication.

This paper is a member of
 Community Newspapers
 Association Victoria

Supported by
 Macedon
 Ranges
 Shire Council

Printed by Mulqueens Printers
 147-151 Allingham St,
 Golden Square, VIC 3555



The New Woodend Star and the Rotary Club of Woodend acknowledge the Dja Dja Wurrung, Taungurung and Wurundjeri Woi Wurrung Peoples and their Ancestors as the Traditional Owners and Custodians of the lands of the Macedon Ranges on which we meet, work and live. We recognise their living culture and continuous connection to the land and waters in our area and pay our respects to their Elders past, present and emerging.

CLASSIFIED ADS
 Wanted ads, for sale or job vacancies. We will
 prepare your advert with your text.

WANTED Grazing land
for lease or agistment - MACEDON RANGES

- Regenerative land management principles used.
- Stud cattle operation.
- Will maintain and improve farm infrastructure, control invasive weeds, improve pastures.
- Property must have access to a reliable water source (dam, bore, water catchment).

**Please call Matthew to discuss
 0403297737**

WE BUY
CAR - CARAVAN - MOTORHOME
0418 183 360

Cash - Bank Cheque - Finance Paid Out - EFT

SELL TODAY
 LMCT 10132 SHD 0015048

42 Urquhart St, Woodend

FOR LEASE

COMMERCIAL SPACES **x3 AVAILABLE** 0405 504 644

OFFICE SPACE, CONSULTING ROOMS
 ARTIST STUDIO/WORKSPACE

KYNETON
EQUIPMENT & PARTY
HIRE

FOR ALL YOUR HIRING NEEDS
 8-12 Beauchamp Street, Kyneton VIC 3444
PHONE: (03) 5422 2311
 Email: kynhire@bigpond.net.au
 website: www.kynetonhire.com.au

Theatre for kids on the spectrum in Australian of the Year nomination

Two Woodend residents were recently nominated for the 2024 Australian of the Year 'Local Hero' award. Dr. Jenny Heriot, Au.D. and Drew Heriot, founders and directors of Full Spectrum Theatre were nominated for the honour, which recognises Australians making a meaningful impact in their local community.

Although they didn't take home the award from the Arts Centre ceremony, held last month, the Heriots expressed how honoured they felt to have been recognised alongside such inspiring individuals from across Victoria.

Full Spectrum Theatre began as a personal mission for Jenny and Drew Heriot to find a space where their neurodiverse son could thrive. Today, Full Spectrum has grown into a vibrant community, where neurodiverse kids can shine, build friendships, and develop essential life skills in a welcoming environment. Recently, the program partnered with La Trobe University's Olga Tennison Autism Research Center (OTARC) to explore the impacts of inclusive theatre on young actors.

"We hope this recognition shines a light on the importance of safe spaces where neurodiverse kids can fully embrace who they are," said Jenny. "At Full Spectrum Theatre, it's about more than just theatre—we're fostering confidence, life skills, and friendships in a place that encourages self-expression without pressure to conform. We hope to inspire similar programs that bring joy and growth to children everywhere."

To find out more, visit www.fullspectrumtheatre.com.au.



Photo: L-R Professor the Honourable Margaret Gardner AC Governor of Victoria, Drew Heriot and Dr Jenny Heriot, Au.D. Hon. Jacinta Allan MP Premier of Victoria Member for Bendigo East

Woodend Probus Club



Merry Christmas and happy New Year everyone.

The first meeting for new year will now be held on 14 February 2025.

Annual Meeting 21 March 2025 – All Welcome

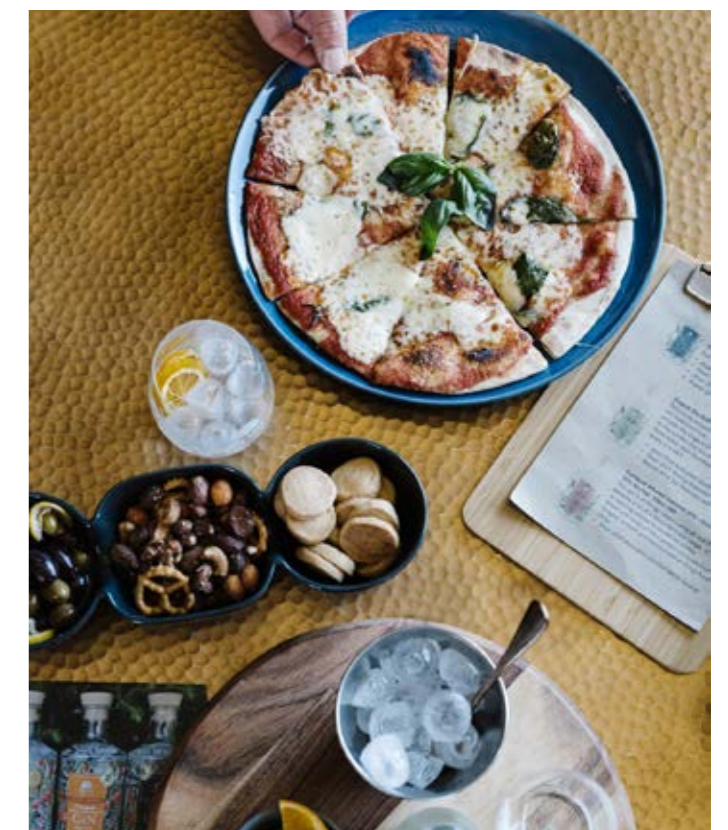
Future meetings: Third Friday of the month at the Norma Richardson Hall, Woodend.

For further information, contact Chris 0402 380 990 or Pat

Round up your friends and get ready for a new monthly tradition at Big Tree!

On the first Sunday of every month, we're hosting Sunday Sessions. Mark your calendars for a Sunday, 1 December kickoff date, as Big Tree Distillery brings you an afternoon of live music, delicious food, and farm-crafted gin! Set against the beautiful backdrop of Jack's Springs Farm, this Sunday Session promises a cozy, laid-back atmosphere with incredible local talent.

For our first ever Sunday session, talented local musician Jarrod Shaw will be performing his soulful blues-style tunes from 1pm to 4pm, bringing the perfect soundtrack to your afternoon. Relax with friends and enjoy some of the finest local gin and tasty pizza, with your ticket including two refreshing G&Ts and a delicious pizza. Doors open at 11am, and with limited spots available, be sure to grab your tickets early through the Big Tree website. Come join us at Big Tree Distillery's Sunday Session for a Sunday to remember!





It is illegal to double up.

Riding with more than one person will cost you each a \$247 fine.

Know the e-scooter rules and ride safely.



tac.vic.gov.au/e-scooters

McLean Delmo Bentleys Accountants grow in the Macedon Ranges region

McLean Delmo Bentleys, the Victorian member of Bentleys, a top 12 Australian network is growing in the Macedon Ranges region. McLean Delmo Bentleys is a dynamic accounting and financial services firm that has been delivering exceptional solutions contributing to the success of people and businesses for over 50 years. The firm offers multi-disciplinary services enhanced through technology, innovation, progressive leadership and passionate, committed people. The full range of professional services offered in-house include:

- Business Advisory
- Taxation
- Accounting
- Audit and Assurance
- Corporate Secretarial
- ESG and Carbon Accounting
- Financial Planning
- Finance and Lending
- Self-Managed Super Funds
- Risk Insurance
- Business Insurance

The focus of McLean Delmo Bentleys is to continue offering the expert services their clients know and rely on. Importantly, their growth in the region allows them to serve the community effectively with a stronger, more versatile team, supporting local growth and contributing to the community's prosperity.

November was a particularly exciting month for the Bentleys team as they have moved their office from 111 High Street across the road to 17 Nicholson Street, Woodend. McLean Delmo Bentleys has three offices in Victoria – Hawthorn, Woodend and Kilmore.

More exciting news for the team was that their Kilmore office was awarded Winner for the Best Accountants in Kilmore 2024 category by Quality Business Awards. McLean Delmo Bentleys achieved an amazing score exceeding 95%, which reflects the dedication their team puts into their work with clients.

For assistance, please contact your local Bentleys advisor to discuss your situation. We're here to help you get where you want to be.





Open Saturdays & Sundays 10am to 4pm
35 Robertson Drive, Newham

Watercolours, Acrylics, Pan Pastels, Color Stipling Art (dot painting) | Lots of framed and unframed prints of wildlife

Australian Made
Koala, Kookaburra, Echidna and Possum Hand Puppets
Koala and Kangaroo Soft Toys

0412 003 962
kerttu@annelipublishing.com
www.annelipublishing.com



McLean Delmo Bentleys
THINKING AHEAD

Do you need help with your tax return?

Consult with your Bentleys advisor today.

Woodend Office | 17 Nicholson Street Woodend VIC 3442
Kilmore Office | 19 Bourke Street Kilmore VIC 3764
Phone: 9018 4666 | www.bentleys.com.au

Woodend Office | 17 Nicholson Street Woodend VIC 3442
Kilmore Office | 19 Bourke Street Kilmore VIC 3764
Phone: +61 3 9018 4666 | www.bentleys.com.au

Anne-Li Gallery

Owner of Anne-Li Gallery in Newham, Kerttu, was born in Finland, where she had already been painting at school and had won first prizes at art competitions. After moving to Australia with her family in 1964, the self-taught artist kept painting, finding the wonderful fauna and flora and all the different birdlife in her new environment. She says that moving to the country near Hanging Rock in 1989 with her husband Mauri, was the best move.

The luxury of a large studio, with lots of space and large windows, is the best place to keep on painting.

She paints in watercolours, acrylics, oil, pan-pastels, coloured pencils, pen, and stipling art (dot painting). She also likes to be creative with clay sculpture and origami.

Add the Anne-Li Gallery to your Xmas shopping list!



Embracing the All-Electric Future: Your Guide to a Sustainable Home

The shift towards an all-electric future raises crucial decisions about replacing common gas appliances. This is true whether you're building anew, renovating, or upgrading an old appliance.

The move to all-electric isn't just a passing trend – it's a significant step towards a more sustainable future. Let's explore the switch to electric, acknowledging the practicalities and benefits.

Cooking

Induction Cooktops: Transitioning from a beloved gas stove? Induction cooktops are a compelling alternative. While they might require a bit of a learning curve for avid gas users, they offer superior energy efficiency, precise temperature control, and enhanced safety. However, assessing your home's electrical capacity first is important, as induction cooking can be power-hungry.

Hot Water

Look for an efficient hot water upgrade, especially if you have solar power or a traditional electric element hot water; consider a heat pump hot water system. They are incredibly efficient, using less electricity to deliver four times the energy output, this is one of the most cost-effective changes you can make.

Heating & Cooling

Reverse Cycle Air Conditioning employs heat pump technology similar to the hot water systems, offering an efficient solution for heating and cooling. It's an ideal replacement for gas heating, giving you greater control and being powerable by renewable sources, possibly even your own solar panels.



The Bluegum Approach

At Bluegum, we take a holistic approach to your home's energy needs. Creating solutions that ensure your solar systems, heat pump hot water, electrical upgrades, EV charging, and air conditioning work together to give you the right solutions long term. Our team is here to help you every step of the way, ensuring that your move to an all-electric home saves you money and makes your life more comfortable and convenient.

Ready for Change?

For personalised advice and solutions, scan the QR code below or call us at 1300 306 342. Let's build a sustainable, comfortable future together!

Submitted By:
Chantel Gilbert, CEO of Bluegum

REC: 20047 ARC: AU39146



"Everything They Did Screamed Quality!"
Bluegum got our solar panels and air-cons installed ahead of schedule. They knew what they were doing, and they take quality very seriously." ~Steve, Woodend

Call 1300 306 342 or
Scan the QR Code to
Get Your FREE Consult
bluegumelectricalsolutions.com.au



Chantel & Josh Gilbert
Award Winning Local Energy Experts

Rotary
Club of Woodend





Healthy Landscapes events

Grass identification field days

Join our skilled grass identification practitioner in learning how to use our Grasses of Central Victoria guide. We will show you:

- How to use our new grass identification guide in the field
- Traits of grassland plants
- How to identify native and exotic plants in the field
- How to identify important weeds in the region.

There are sessions available in December.

- Session 2: Malmesbury - 4 December 2024, 10am-12pm
- Session 3: Clunes - 12 December 2024, 10am-12pm

To register for our events, visit mrsc.vic.gov.au/environment-events and while you're there, sign up to Council's monthly environment eNews and you will be the first to hear about environmental news across the shire.

Textile recycling update

Did you know, Australians send 200,000 tonnes of clothing to landfill each year?

Residents in the Macedon Ranges are helping to tackle this issue through Council's free textile recycling program. The program has diverted more than 46,000 kilograms of textile waste from landfill since it was launched last year.

Old and damaged textiles, accessories and shoes that are not suitable for donation can be taken to resource recovery facilities for recycling. Residents and businesses are encouraged to use this free service and give their old textiles a second life.

Resource recovery facility locations can be found at mrsc.vic.gov.au/Resource-Recovery-Facilities

Disposing of hazardous items

When disposed of incorrectly, hazardous substances can leach into soil and groundwater, or release into the air, creating long-term environmental contamination issues. These materials also pose an immediate health and safety risk to waste management staff.


When disposed of correctly, valuable resources can be safely collected and reused. For more information about how to dispose of hazardous items, visit mrsc.vic.gov.au/A-Zguide




PETE'S GARDENING & MAINTENANCE

- ✓ MOWING
- ✓ WEED CONTROL
- ✓ GUTTERS
- ✓ PRUNING
- ✓ CLEAN UPS

0438 488 776





— SETUP INSIDE OUT YOUR ALL-ROUND PROPERTY CONSULTANTS

We specialise in project management and property advisory services to oversee your building project, from concept to completion, to guarantee you peace of mind.

<ul style="list-style-type: none"> Garden Design Landscaping Preparing properties for sale Owner Builder support Vendor Advocacy Finding a Registered Builder 	<ul style="list-style-type: none"> Small and Large Renovations New Homes Bathrooms and Laundries Preconstruction and Building Permits Granny Flats Modular Construction
---	---

SETUP INSIDE OUT

CONTACT | 0433 482 022
nicole@setupinsideout.com.au
www.setupinsideout.com.au



DIAMOND T-R-U-S-S-E-S

K.T.C Pty Ltd ta
Established 2023

No 988 Black Forest Drive, Woodend Vic 3442
ABN: 63 666 588 852 – ACN: 666 588 852

- Manufacture prefabricated wall, roof and floor trusses
- Quick quote and production turnaround times
- Detailed quotes and final construction layouts
- Site measures conducted
- Competitive pricing
- Professional friendly service

Licensed MiTek fabricator



Call Maxwell on 04 1463 4865
Or email mstanly@live.com Web – www.diamondtrusses.com

Sustainable, Local, Zero-Waste



Wash Against Waste



Farm Fresh



Genuine & Artisanal



Powered by Volunteers

1st Saturday of every month



9am-1pm
mrsg.org.au

Discover the Woodend Community Farmers Market: where sustainability and great food meet to support a healthier planet!

Local students make waves in National Water Week poster competition



Water-wise students are being celebrated this week with Greater Western Water (GWW) announcing the winners of the 2024 National Water Week poster competition.

Creative youngsters from 47 schools, kindergartens and early learning centres across GWW's service area entered this year's competition.

Winners came from Point Cook, Melton, Wyndham Vale, Derrimut, Gisborne, New Gisborne, Bacchus Marsh, Truganina, Williamstown and Carlton.

GWW's General Manager, Strategy and Partnerships Kessia Thomson said there were a record 1,240 entries this year from students across 10 municipalities within the region.

"We had so many brilliant posters this year, all beautifully reflecting the theme "Water for all, inspiring action", which highlights the

vital role water plays in connecting people and communities," Ms Thomson said.

"Congratulations to all the entrants and our lucky winners – we loved judging your work. It's great to see so many inspiring young role models advocating for responsible water use and protection of our planet's most precious resource for future generations."

First prize winners in each category were automatically entered into the state awards and four local students went on to win first, joint first, second and third prizes in four of the five state level categories.


Greater Western Water awarded Manor Lakes P-12 College in Wyndham Vale this year's school prize of \$500 towards a sustainable project. This prize was sponsored by Southern Rural Water.


The Australian Water Association hosts National Water Week which ran from 21–27 October this year, with the aim to promote the value of water across Australia, inspiring individuals, education providers, communities and organisations to work together to raise community awareness and understanding of water-related issues.

See the full list of our regional winners on our website and check out the winning posters and watch Minister for Water Harriet Shing announcing the winners below:

www.gww.com.au/about/community/national-water-week

SUBMITTED BY STEFAN DELATOVIC






Bushfires can impact your mains water supply

You may have low pressure or no supply. Keep enough drinking water in your emergency kit for all family members and pets.

Visit our website for more information.

gww.com.au/bushfires

Phone 13 44 99



Translation & Interpreter Service 13 14 50



Electrify 3442 Update

Electrify 3442 is about helping households install or upgrade six things: electric transport, home heating and cooling, water heating, cooking, rooftop solar and home battery. This is important in preparing for the future because:

1. Gas is becoming more expensive:

- Australian gas, once a cheap fuel, is now exported. Domestic supply prices are therefore influenced by overseas supply and demand.
- Victorian gas production is declining (DEECA Gas Substitution Roadmap Update 2023)
- Supply charges are increasing as households disconnect from the gas grid. In a recent "Renew Economy" article (31 October 2024) Ausnet was quoted as saying "the renewable gas path is now increasingly unlikely for Victorian households," and it is seeking to recover \$70 million more from its customers to recover the cost of the infrastructure that will become redundant as a result of electrification.

2. The wholesale cost of electricity (and the price to the consumer) is decreasing as the grid is increasingly powered by renewable sources:

- The grid is increasingly powered by renewable sources (eg solar and hydroelectricity) rather than fossil fuels (coal and gas) (Essential Services Commission Victorian Default Offer price review 2024-25).
- Coal-fired generators of electricity are progressively being retired from service.
- At the same time, household rooftop solar and large-scale renewable generation like the "solar farms" lining the Hume Highway and wind turbines like those at Hepburn are contributing more energy.

More than 40% of the energy in the national electricity grid comes from renewable energy sources, and rooftop solar contributes about 12% of the electricity in the grid (Australian Energy Market Operator 2024 Integrated System Plan, cited by Clean Energy Council)

3. Our homes, our communities and our industries will require more electricity in future to power them.

Victoria's Gas Substitution Roadmap outlines the state government's plan for the transition. If you're curious to find out more, you can find an update to the plan at www.energy.vic.gov.au

Breaking News: Batteries on Wheels!

Many respondents in our Community Survey earlier this year indicated an interest in purchasing an electric vehicle when it could be used to power their homes. Federal energy and climate minister Chris Bowen recently announced an agreement on new standards for vehicle-to-grid charging, paving the way for EVs to be used as



batteries on wheels by the end of the year. (Further information at TheDriven.io)

Final Information Session for 2024

Electrify 3442 and GREG (Go Renewable Energy Group) are running an information session on household batteries. The session is FREE but needs to be booked.

Home Batteries 101: an introduction to home batteries. Wednesday 4 December 7pm

Explore your options with home batteries for energy independence and saving even more on energy bills (whether you already have rooftop solar or not!). For further information and bookings for this event, see our website: mrsq.org.au/events-calendar

SUBMITTED BY SUE BARKER



Thank you from Woodend Landcare



Woodend Landcare would like to express our gratitude to all our dedicated volunteers and generous supporters who have helped us achieve so much this year. Some of our 2024 accomplishments include:

- Received Macedon Ranges Shire Council Healthy People and Environment Community Award.
- Commendation presented to Nicole Middleton (our Treasurer) for the Joan Kirner Landcare Award.
- Received donations from Woodend Rotary, Woodend Community Bags (MRSG), Natural Grace, Macedon Ranges Signs and several locals.
- Filmed for Postcards travel and leisure tv show to air early in 2025.
- Completion of the Pollinator Corridor Project, planting 750 understorey species along Five Mile Creek and surrounds.
- Collaboration with Woodend Scouts to plant 660 seedlings for the Black Gum Biolink Project (Join us for more planting days in 2025).
- Provided guided tours of our revegetation work along Five Mile Creek to two Victoria University student groups and the VNPA Nature's Stewards program.
- Negotiated approval by VicTrack to continue working to conserve the beautiful remnant flora along Quarry Road Rail Reserve
- Applied for and acquitted 10 grants, including auspicing a GWW grant for Woodend Primary School
- Monthly sampling of Five Mile Creek water to test for water quality (CMA Water Watch) and pesticide residues (Deakin University research)
- Cleared 464 pieces of rubbish from Five Mile Creek for Clean Up Australia Day.
- MRIMAG continued to reduce the impact of introduced Indian Mynas on indigenous bird communities.

- Sightings of platypus and rakali in Five Mile Creek within town, indicating a healthy riparian ecosystem.
- Eleven Sunday working bees as well as Thursday Crew working bees during most weeks.
- Gazillions of ivy, willow, blackberry, privet, broom, gorse plus other invasive weeds removed from our local environment.

Plus more, but we've run out of room here. Despite our successes this year, we only have 36 financial members, which is down from last year. If you'd like to support the amazing work of Woodend Landcare volunteers maintaining and enhancing the natural environment within and around our town, please sign up as a financial or financial/active member at [Get Involved \(woodendlandcare.org\)](http://Get Involved (woodendlandcare.org)).



Photos: Some of the Woodend Landcare committee members at working bees, showing some festive spirit!

Next working bees

We will be taking a well-deserved break from our monthly bees during December and January, but our trusty Thursday Crew will resume after the Christmas break. Our next working bees will be:

- Thursday Crew activities over January (contact Dave Bower dvbower65@gmail.com).
- Sunday working bee on Sunday 9 February – Jeffreys St (see woodendlandcare.org)

SUBMITTED BY PETER YATES

What's up skip - been rescued by someone who isn't a wildlife rehabilitator?

Victorians are being reminded not to take injured or orphaned native animals home with them.

It is illegal in Victoria to take and keep sick, injured or orphaned wildlife from the wild: taking native animals from the wild without authorisation is an offence under the Wildlife Act 1975 that carries a fine of up to \$9879.50 and/or six months' imprisonment.

Chief Conservation Regulator Kate Gavens said while the intentions might be good, in most cases it's not the best outcome for an orphaned or injured wild animal, such as kangaroo joeys, to be taken to someone's house who isn't authorised to do so.

Wildlife rehabilitation is undertaken by a network of authorised and experienced volunteer shelter operators and foster carers that are supported by wildlife rescuers and registered veterinarians.

People taking wildlife home can risk exposure to diseases to themselves or their pets, and the animals can be exposed to loud human living environments and inappropriate, and sometimes unsafe, caring and feeding techniques. Ms Gavens also says that sick, injured and orphaned wildlife can become habituated to humans and domestic animals, potentially losing their natural instincts and

behaviours, hindering their ability to survive in the wild.

Diseases including avian influenza can be spread by picking up wildlife. State and Commonwealth agencies are working together to ensure the potential impacts of Highly Pathogenic Avian Influenza (HPAI) outbreaks are minimised including helping wildlife rehabilitators to prepare for any outbreak of the H5N1 strain, which has not been detected in Australia to date. For more information on the response to HPAI outbreaks go to <https://www.wildlife.vic.gov.au/sick-injured-or-orphaned-wildlife/high-pathogenic-avian-influenza>.

For more information on native wildlife care or on becoming an authorised wildlife shelter or foster carer, go to <https://www.vic.gov.au/wildlife-rehabilitation-shelters-and-foster-carers>.

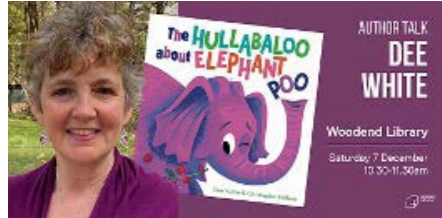
If members of the public encounter sick, injured or orphaned wildlife, they should call the Department of Energy, Environment and Climate Action on 136 186 or use the Help for Injured Wildlife tool.

SUBMITTED BY NICK TALBOT, DEECA

Woodend Library News

Dee White author talk and book launch – Saturday 7 December at 10.30am

Join us for the final Market Day Storytime of 2024, featuring a new children’s book by beloved local author, Dee White. Kaz has planned a session filled with festive fun, laughter, and the chance to meet the author as Dee launches her latest creation and discusses the picture book-writing process.



Book sales and signings. Bookings required.

Kathy Mexted author talk: Take Flight – Wednesday 11 December at 2pm

In *Take Flight*, author and pilot Kathy Mexted celebrates the determination, skill and expertise of ten Australian women who have beaten the odds to find success and joy in our skies. Beautifully written, with captivating stories about amazing female pilots, from flying with swans in the freezing skies over Europe to piloting choppers in the outback – you will be inspired!



Book sales and signings. Bookings required.

Karen Martin: The Little Book of Red Flags – Saturday 14 December, 11am–12pm

Amid the spiralling crisis of a failing marriage, Karen saved screenshots from Instagram. Poems, quotes and musings spoke to her experience, that she later realised were red flags. Meet the locally-based creator of this delightful little book, beautifully illustrated by talented Braemar student, Thomas Corboy.

Book sales and signings. Bookings required.

Bird Watching Kit

Try the new Bird Watching Kit, available for loan through the library. The pack contains binoculars, trail guides and a bird book. The kit is available to borrow for one week and can be reserved through our catalogue with your library card!

Christmas period closure

Woodend Library will be closed from 3pm on Christmas Eve, re-opening on 2 January. The after-hours returns chute will remain open.

And just like that ... there goes another year! From all of the Woodend Library team, thank you to all of our wonderful volunteers and students who have helped us over this year; it is always appreciated. Wishing everyone a wonderful, happy and safe festive season! See you in 2025!

For all bookings, please head to our website or give us a call. See you in the Library!

5427 2074 | woodend@ncgrl.vic.gov.au | www.ncgrl.vic.gov.au

One billion containers reached on the first anniversary of Container Deposit Scheme

On the first anniversary of the introduction of Victoria’s Container Deposit Scheme, the state is celebrating another major milestone.

One billion containers have been returned through the scheme, reducing litter and putting money back into Victorians’ pockets. The scheme not only benefits the environment but has injected nearly \$100 million back into the community, including over \$918,000 to charities and community groups through donation partners.

Visy, operator of the CDS Vic North Zone, has established over 245 refund points across the Loddon, Mallee, and Hume regions and the inner north and eastern suburbs of Melbourne.

These return points include reverse vending machines (RVMs), which offer self-service automated returns, over-the-counter (OTC) refund points operated by local businesses and community organisations, and depots, capable of processing larger quantities of containers. Tim O’Donnell, General Manager of CDS at Visy, stated, “The success of the scheme proves people care about the environment and love recycling. We’re honoured to have worked with local communities and partners to play our part in making CDS Vic the most accessible scheme in Australia.”

Community members can find their nearest refund point, and access their electronic refunds, through the CDS Vic North app for iOS or Android.

To find out more about Victoria’s Container Deposit Scheme, visit www.cdsvic.org.au.

SUBMITTED BY MEDIA@VISY

RAMAI
SPECIALISTS

CHRISTMAS GIFT VOUCHERS!

AVAILABLE ONLINE OR INSTORE

Facials 🎄 Massage 🎄 Waxing 🎄 Tinting 🎄

WWW.RAMAI.COM.AU
0438 062 143

Community Bank
Trentham & Districts

Bendigo Bank

ph: 5424 1608

Merry Christmas!

from your
local community branch
teams

Community Bank
Gisborne & District

Bendigo Bank

ph: 5420 7210

Woodend Community Partnerships

We proudly continue to support our Woodend partners through Community Grants & Sponsorships. We look forward to new and continued partnerships in 2025!

2024 Woodend Grants and Sponsorships:

Woodend Heskett Football Netball Club
Woodend Winter Arts Festival
Woodend Rotary Club - Halloween
Woodend Golf Club – Women’s Get Into Golf, Quarry Project, Tournament
Woodend Cricket Club – Girls Cricket Initiative
Woodend Lions Club – Skin Check Bus
Woodend Neighbourhood House – Community Lunches and Community Bike Shed, and Banking Online Safely session.

Trentham Branch is open all days besides the Public Holidays throughout Christmas and New Year break. Come in and say hello!

37b High Street, Trentham Ph: 5424 1608 or search Trentham Bendigo Bank



Scholarships to support learning in 2025

If study is in your plan for next year, check out our scholarships!

Our Community Bank Gisborne & District Early Tertiary Scholarships support local youth commencing a bachelor’s degree or TAFE study. University starters need to have completed VCE in 2024 or 2023 (taken a gap year). TAFE starters need to have completed a minimum of Year 10 in 2024 and left secondary school. For details about our early tertiary scholarships and online applications, go to communitybankgisborne.smartygrants.com.au. Applications for these scholarships close 17 January 2025.

We will also offer a scholarship to one resident of Gisborne and surrounds who is accepted into the 2025 Loddon Murray Community Leadership Program. LMCLP is a part-time personal development course offered by Lead Loddon Murray to develop and connect community leaders in the region. For details on LMCLP and to apply for 2025 LMCLP, visit leadlm.org.au. Applications are open now.

We wish everyone a peaceful end to the year and thank the many community groups who have partnered with us in 2024 to make good things happen in Woodend. We have been pleased to support 1st Woodend Scouts, Woodend Winter Arts Festival, Woodend Hanging Rock Petanque Club, Woodend Neighbourhood House and Macedon Ranges Suicide Prevention Action Group among many others in the district.

Special thanks to our branch customers for banking with Bendigo Bank at Community Bank Gisborne & District, as that makes our community giving possible.

We look forward to another great year in 2025!

APPLY NOW

2025 Tertiary Scholarship Program

Gindu

An award-winning gin distillery in the heart of Woodend

4/80 High St, Woodend | gindu.com.au



December is a time for giving

There are many ways you can support the Woodend Neighbourhood House in our mission to help locals facing tough times this Christmas.

- Donate a gift: we are gratefully accepting donations of gifts and presents. In previous years, we noted the generosity of our community to provide toys for pre-school and primary-aged children, however we'd love to receive gifts for teenagers and adults in our community, too.
- Fill a Reverse Advent Calendar box: Our hugely popular Reverse Advent Calendar Appeal is back for its fourth year. Place an item a day into the box (non-perishable food, toiletries, small gifts or a Christmas treat) and it will be given to locals in need this Christmas. Boxes can be picked up from the Woodend Neighbourhood House during opening hours and are due back to the House by Monday 16 December.
- Donate to the Food Bank: Donations of pantry staples, cleaning products or personal hygiene items are very welcome through the collection bins in Coles and IGA in Woodend, or in person at reception at the Woodend Neighbourhood House.
- Donate money: We also welcome cash donations from local individuals or businesses to help support our gift giving and food bank appeal. Donations can be made either in person at the House or via bank transfer.

If you know someone in our community who would benefit from receiving a gift or Reverse Advent Calendar box, or would like to make a request for yourself, please get in touch with the Woodend Neighbourhood House on Monday to Friday between 9am and 3pm, via telephone on 5427 1845, or email reception@woodendnh.org.au.

Santa Paws Portraits fundraising event

We're thrilled to invite your furry friends to the Woodend Neighbourhood House for a special experience – photos with Santa! Join us on Sunday 1 December or Sunday 8 December for this festive event that will not only create lasting memories, but will give back to our community, with all proceeds going directly to supporting the Woodend Neighbourhood House and the Woodend Food Bank, helping us make a difference for those in need this Christmas.

Each booking includes a private, 10-minute photo session with Santa, perfect for pets of all shapes and sizes. After your session, you'll receive two digital photos, delivered straight to your email to share with family and friends, print as keepsakes, or use for a greeting card!

Spaces are limited, so book early to ensure your pet's moment with Santa. Visit our website to reserve your spot today!

Christmas craft workshops for kids

Get into the holiday spirit with two exciting workshops led by local artist Penelope Cato! Perfect for preschoolers and primary school children, these sessions let your little ones create and decorate their very own freestanding cardboard Christmas trees. Sessions are on Wednesday 4 December at 2pm to 3pm (preschoolers) or 4pm to 5pm (primary school). Fee includes all materials (this event has been subsidised by the Woodend Neighbourhood House). See our website for cost information and bookings, which are essential.

December Community Lunch

Join us for our annual end-of-year Community Lunch at the Woodend RSL on Tuesday 10 December at 12pm. The December luncheon is always a special one as we celebrate the year with friends, old and new. Bookings are essential for this popular event that is likely to book out. Bookings can be made online via our website, over the telephone or in person. While we'd love a small \$5 donation per

person on the day to help cover costs, it's not essential.

On behalf of the Woodend Neighbourhood House, we would like to extend our warmest wishes to our local community for a Merry Christmas and a safe, healthy New Year!

For more information about any of our upcoming activities, workshops, courses, or events, drop by the House, visit our website www.woodendnh.org.au or call 5427 1845.



Woodend Seniors Club

At the November meeting, we were successful in filling all the positions of the executive and committee. Many thanks to those that have taken on a position.

We had a great time being driven around Bendigo on the Talking Tram and surface tour of the Central Deborah Gold Mine in November.

The Christmas/New Year break will start on Friday 20 December, and we will be resuming on Tuesday 14th January 2025.

New members are always welcome. If you are interested in joining, please call Margaret (0458 272 767), Irene (0417 676 843) or Alma (0400 134 478).

Wishing all members and friends a happy and healthy festive season.

SUBMITTED BY ALMA ON BEHALF OF WOODEND SENIORS GROUP

THREE GENERATIONS OF EXPERIENCE IN GLASS AND GLAZING

- GLASS REPLACEMENTS
- SHOWER SCREENS
- MIRRORS
- SPLASHBACKS
- PET DOORS
- RETROFIT DOUBLE GLAZING

Free, no-obligation quotes



Gisborne
03 5428 2899

Kyneton
03 5422 1724



Woodend General

Home Garden Family



The Festive Season is here!

Beautiful Goods & Gifts. Complimentary Gift Wrapping. Save time by shopping online & picking up in-store.

84-88 HIGH STREET WOODEND
OPEN 7 DAYS

Monday-Saturday 9.30-5pm Sunday 10-4pm
Shop online - woodendgeneral.com.au

Proudly locally owned & Female led.

Small acts make a big impact.

Keep food scraps and garden clippings out of landfill.

Using your green bin correctly means your organics can be turned into mulch and compost. This reduces the amount of waste going to landfill, keeps our soils healthy and reduces greenhouse gas emissions.

Visit mrsc.vic.gov.au



MRSC Environmental News

Soft plastic recycling pilot

Did you know Council has a soft plastic recycling solution?

Get involved by collecting your free soft plastic orange collection bags from a customer service centre, any of our three resource recovery facilities, Kyneton Toyota Sports & Aquatic Centre or Gisborne Aquatic Centre.

All soft and 'scrunchable' plastic can be recycled via the orange bag, and when your bag is filled tight like a basketball, you can pop it in your yellow-lidded recycling bin.

Not sure if what you have is soft plastic? Do the scrunch test! Does the plastic item scrunch easily into the palm of your hand and not bounce back into shape? Then it's soft plastic and can go in your orange collection bag. If the plastic item is rigid (like a milk bottle, biscuit or meat tray) and bounces back into shape once you un-scrunch, then it's not soft plastic and cannot go in the orange bag.

And remember, you don't need a special bin for your orange bag, just place it straight into your recycling bin at home.

Christmas bin collections

During 25-27 December, please put your bin out as usual and wait for it to be collected. In most cases, your bin will be collected a day late (i.e. bins usually collected on a Wednesday will be collected on the Thursday, bins usually collected on a Thursday will be collected on the Friday and bins usually collected on a Friday will be collected on the Saturday).

All bins will be collected by Saturday 28 December at the latest. If your bin has not been collected by this time, please contact Council on (03) 5422 0333.

Keeping waste down over the holiday season

It's that time of the year again! The holiday season is upon us, and Council's Resource Recovery team would like to remind the community of the recycling options available in the shire.

Remember to:

- flatten cardboard boxes before putting them in the recycling bin
- scrunch up foil into a small ball before putting it in your recycling bin
- take the lids off glass bottles and jars before putting them in your glass bin
- recycle excess cardboard, polystyrene, e-waste and textiles at your local resource recovery facility for free
- take old decorations – including lights – to resource recovery facilities for resale or recycling.

Other waste reduction tips:

- When giving gifts, consider using reusable wrapping paper to reduce waste.
- Plan your meals and only buy what you need. If you have leftovers,

consider freezing them to reduce your food waste.

- Consider purchasing gifts from local businesses to support the local economy.
- Re-gift unwanted items or donate them to participating charities or op shops.
- Exchange empty drink cans, cartons and bottles for cash at the Victorian Container Deposit Scheme (CDS) refund point in Gisborne, refunds can be redeemed or donated to charity.

Waste Education videos

Council's Resource Recovery team is pleased to announce the launch of the Waste Education video series, now available on YouTube and Council's website.

The five videos showcase Council's waste and recycling initiatives in the Macedon Ranges. Kerby, Council's bin mascot, shows us what can and can't be recycled in the four-bin system and the resource recovery facilities, where our recycling, glass and FOGO is recycled and why it's important to reduce what we put in the general waste bin. The videos talk to other waste responsibilities Council has aside from bin collections and how these are managed and run.

Each bin video is embedded on the respective bin's webpage and serve as visual aids to help residents sort their waste correctly. Visit mrsc.vic.gov.au/your-bins

Macedon Ranges Obedience Dog Club

Our last induction for the year saw three new members join. Our next induction will be held on Sunday 2 February. See website details below for information on becoming a member.

Christmas is almost here, and whilst many are aware of the problems chocolate causes to pets, other festive treats are also toxic: nuts, mince pies and Christmas pudding. Best keep everything out of reach, and remember a dog's nose is powerful and can sniff out food under the Christmas tree with ease.

We don't often use mistletoe or holly in Australia, but we often give poinsettia as gifts; poinsettia is dangerous if eaten.

Candles can also be an issue as dog fur is flammable. A wagging tail can easily knock a candle over, setting fire to wrapping paper, presents etc.

A dog is curious by nature, and whether real or artificial, a Christmas tree can pose a health risk. Adorned with fairy lights, tinsel, edible treats, Christmas trees are seen by the dog as a convenient peeing post or a new chew toy. Christmas tree oil/sap can cause skin irritation and if eaten or chewed, pine needles are mildly toxic. Chewing on an artificial tree has its own dangers, such as the risk of ingesting bits of wire. To keep your dog safe, place your tree in a corner, elevated, maybe contained, and save your best decorations for the top.

Lastly, from our family at MRODC to yours, have a Merry Christmas and we'll see you in 2025.

Visit our website www.macedonrangesdogclub.org.au or our Facebook page, or email to info@macedonrangesdogclub.org.au.

Remember a dog is for life not just Christmas.

SUBMITTED BY CAROL, INSTRUCTOR/TREASURER MRODC

 <p>Property & Business</p>	 <p>Family Law</p>	 <p>Estate Planning & Probate</p>	<p>5427 2477 chinkasteel.com.au</p> <p>74 High St, Woodend & 3a/1 Puckle St, Moonee Ponds</p> <p>CHINKA (HEP) STEEL Solicitors</p>
--	---	--	--



Hesket 159 Falls Road
(Enter from Straws Lane - 200m to property)

5.58 ha (13.7 Acres)

In the dress circle of the Macedon Ranges

An extremely rare opportunity to purchase a special small acreage property (with a planning permit) within the exclusive Straws Lane valley. An opportunity awaits to build your dream new home for either permanent living or as an inner country retreat.

Features include outstanding aesthetic amenity, magnificent near and long panoramic views over verdant rolling countryside including to Camels Hump, the Cobaw Ranges and Mount Alexander, excellent red volcanic soils, good pastures, new fencing, over 200 m frontage to the spring fed Smokers Creek, some beautiful mature trees, birdlife and wildlife habitat, and access via a charming country lane.

Auction Saturday 7 December 2024 at 11:00 am
Reserve Price \$1,475,000
To view call John Keating 0419 880 444



Woodend CFA opens new Fire Brigade Memorial Garden

One of the highlights of Open Day at the Woodend CFA in November was the official opening of the new Memorial Garden.



Captain Steve Ritchie made a presentation outlining the reason for the garden and explaining each of the special features that form the garden, which are explained on a brass plaque mounted on a large rock.

"In honour of brigade volunteers who served with courage to protect our community and have now passed.

The bell symbolising the call to duty.

The uprights symbolising our forests.

The garden symbolising tranquility and new beginnings."

The bell itself is an important piece of brigade history, having been the way Woodend volunteer fire fighters were called to action in the days prior to electronic pagers and modern equipment.

The ceremony concluded with First Lieutenant Malcolm Judd ringing the bell thirteen times, to commemorate the thirteen decades of the

From our local Victoria Police Sergeant

We are moving very quickly towards the end of the year. Woodend is still having the usual thefts of cars, from houses and items of opportunity. Again, broken record time, if you secure it, lock it, you will most likely reduce the impact on you and your family—and your insurance premiums. Please don't support the criminal element; make it hard for them.

I was previously a Detective at the Arson Squad. Therefore, I am an advocate for good preparation coming into the fire season. This may be a bit of cross-promotion and reinforce the messaging I'm sure my other colleagues in the CFA are putting out there. The Fire Danger Period for Macedon Ranges has been declared, commencing at 1am on Monday 25 November 2024. From that point on, any open fires within the Macedon Ranges require a permit. Last year, there was a campaign from Victoria Police about this, but it is just as relevant this year as well. If you light it, you own it. If you were to light a fire in the Danger Period, please expect that you will have a court appearance as a direct result of these actions.

Brigade's history, covering 138 years since it was founded in 1896.

Improvements to our FireWise Garden

Another one of the highlights of the Open Day was the opportunity for the community to visit and explore the Brigade's FireWise Garden.

This special space was created several years ago to give residents and visitors an idea of plants that are ideal for our local conditions. A major addition for the Open Day was the inclusion of new naming signs that clearly show the identity of each of the plants in the garden. A huge thank you to Woodend identity John Keating, who donated the signs, and who has been a Woodend CFA member for 53 years, working with Woodend CFA volunteer Kate Daniel.

Factoring in the various FireWise principles, the plant list for our garden consists of:

- A single smooth-barked tree with an open canopy and no lower branches
- Well-spaced shrubs and ground covers
- Few fine-leaved or very dense plant species
- Few resinous or waxy plants
- Few plants which drop or retain dead material
- A mixture of native and exotic plants
- Plants to attract birds, butterflies and other pollinators
- The Woodend CFA FireWise Garden is open to the public to come and visit.

For more information about creating your own Firewise garden, the CFA's Landscaping for Bushfire is available by searching 'Landscaping' on the CFA website.



For further information contact the Woodend CFA on 5427 2356 or visit the station in Urquhart Street. Follow us on Facebook, or you can visit our website: www.woodendcfa.org

SUBMITTED BY MIKE DORNAU, EX-CAPTAIN WOODEND CFA

Finally, we hope you have a great festive season. Woodend Police will be working throughout this time, with a major focus on ensuring a safe community and keeping the roads safe. Woodend Police will be out in force, conducting breath testing day and night, weekdays and weekends, so whilst we are happy for you to enjoy yourselves in the holiday season, please plan ahead and have a designated driver, or use a local driver service.

SUBMITTED BY DAVID ARNOLD, OIC WOODEND POLICE

MACEDON GARDENING

Revitalise Your Garden

- Expert Pruning, Design, Landscaping, Planting, Mowing, Weeding.
- Reliable, 17 years Local experience.
- Fully Insured.

Ian and Melanie Matthews and Trained Staff
0402 464 600

A Second Chance for Art and the Community



The Third Annual Second Chance Art Sale, held in October, was once again a resounding success.

Organized by the Woodend Lions Club, this year's event raised an impressive \$2,600 for the Neighbourhood House Food Bank, continuing the tradition of supporting the local community through art.

The sale thrives thanks to the generosity of locals who donated pre-loved art pieces, and the enthusiastic buyers who found new treasures for their walls. Whether people were downsizing, redecorating, or simply wanting to give back, the result was a vibrant collection of art with a purpose.

In keeping with the spirit of sustainability and community, the remaining pieces didn't go to waste. Unsold canvases were donated to secondary schools to be repurposed for new student artworks. Framed works found their way to local op shops, and a selection was stored away for next year's sale.

The Woodend Lions are proud to lend a hand, with 100% of the funds raised going directly to benefit the community. Through events like these, art continues to make a difference, one brushstroke at a time.

SUBMITTED BY BARRY MCDONALD, WOODEND LIONS



Community-Led Safe Space launched

The Macedon Ranges Suicide Prevention Action Group (MRSPAG) launched its Community-Led Safe Space last month. The group says the space is a "welcoming, non-clinical drop-in centre for individuals experiencing emotional distress or a suicidal crisis", and offers a compassionate and understanding environment where people can feel heard, supported, and understood. "This safe space is a significant step forward in our mission to provide inclusive and empathetic support," said a representative from MRSPAG. "We believe in the power of peer support and the importance of creating a welcoming environment for all." The Community-Led Safe Space, located at Woodend Neighbourhood House, will operate regularly, currently on Wednesdays and fortnightly on Saturdays (expanded hours are planned as more volunteers join):

Wednesdays: 5.30-8.30pm

Saturdays: 1-4pm. No referrals or appointments are required.

The group says that the establishment of MRSPAG's Community-Led Safe Space has been made possible thanks to the support of Roses in the Ocean, Community Bank Gisborne & District, and the Woodend Neighbourhood House.

For further details, please visit the MRSPAG website at mrspag.com.au/safe-space.

SUBMITTED BY FIONA LAWFORD, MRSPAG

OMG, it's December, or "all things festive"

CWA Woodend Eves will be back again at the annual Central Highlands Christmas Fair at the Macedon CWA Hall on 7 December from 10am, with our annual Christmas Stall. We'll be joining other local CWA branches, and together we'll offer a dizzying array of handmade Christmas goodies, including our award-winning preserves, fruit mince pies and other seasonal sweeties, as well as beautiful crafty gifts of all kinds. There's something for everyone, so come down and get into the Christmas spirit with us!

Members popped into Bupa Woodend for Christmas Craft in late November. Christmas wreaths were crafted, stories exchanged, and lots of laughs were had. We always truly enjoy our visits to Bupa, as part of our branch goals of community engagement. We have also been able to offer our Community Awards to a primary school graduate at each of the local schools in our area. We look forward to sharing the recipients with you in the coming weeks.

One of the Christmas activities we look forward to most every year is the Christmas Lights Trail.

As always, we'll publish a map online, so you'll be able to plan out your pjs and Christmas Lights tour. There are so many amazing homeowners who create beautiful displays in Woodend and the surrounding towns!

To make sure we don't miss any magical lights, we're inviting you to nominate yourself, a neighbour, or even a whole street to be part of the trail. The only thing we'll need from you is an address. As well as the big displays, we want to see all the quirky and fun stuff - upcycled decorations, Christmas-themed mailboxes or sparkling fencelines: every display adds to the festive cheer.

Watch the socials, and please email cwawoodendxmaslights@gmail.com to nominate a destination for the map. Find us at @cwawoodendeves on Facebook, and [cwa_woodend_eves](https://www.instagram.com/cwa_woodend_eves) on Instagram.

Christmas is calling!

This Christmas season, treat your loved ones (and yourself!) to something truly special: a unique selection of homemade baked goods, sweet favourites, handcrafted toys, and one-of-a-kind gifts. From rich Christmas cakes and decadent puddings to buttery shortbread and more, there's something to delight everyone.

Members of the CWA from Macedon, Gisborne, Woodend, Trentham, and Mount Macedon have been hard at work to offer you a beautiful array of locally made treasures - perfect for even the most discerning gift-givers.

This event is always a popular one, so be sure to arrive early to grab the best of what's on offer!

Pre-order your Christmas Cake or Pudding now at <https://www.trybooking.com/CXDRK>

CWA Christmas Fair: CWA Hall, 662 Mt Macedon Rd, Mt Macedon, Sat 7th Dec., 10am-3pm

SUBMITTED BY MEL PRITCHARD



Award-Winning Gin on Your Doorstep

JOIN US FOR A DRINK IN THE DISTILLERY TASTING ROOM. WE ARE OPEN EVERY WEEKEND AND MONDAY, OR BY APPOINTMENT.

Check our website for details: www.bigtreedistillery.com.au

307 Hennerbergs Road,
Newham.
1300 040 573

LITTLE GENERAL KIDS

Your local destination for all things Kids & Baby!
Wishing you a Magical Festive Season.

Thank you for all the support shown to us throughout our first few months, we look forward to a wonderful 2025!
Best wishes, Ange, Lou, Jac, Georgie, Julia & Brita x

81 High Street
Woodend
Ph: 03 5427 2609

Woodend Open
Mon - Sat 9.30-5pm
Sun 10-4pm

18 Hargraves Street
Castlemaine
Ph: 03 5401 3953

Castlemaine Open
Mon - Fri 10-5pm
Sat & Sun 10-4pm

Shop online & pick up in store - littlegeneralkids.com.au

Follow us on Instagram & Facebook @littlegeneralkids

Merry Christmas from the MORT & PESTLE TEAM!

THANK YOU FOR ALL YOUR SUPPORT THIS YEAR!

HELLO@PESTLE.COM.AU

WWW.PESTLE.COM.AU

4/130 HIGH ST, WOODEND

Car and equipment finance that puts you in the driver's seat.



Talk to our team today

Mortgage Choice - Woodend

p 5427 4262

w MortgageChoice.com.au/peter.f.machell

MortgageChoice Pty Ltd Australian Credit Licence 382869

A Message for McEwen from Rob Mitchell MP

As the year draws to a close (and is it just me, or has this one flown by?) I want to take a moment to extend my thanks to the incredible communities of McEwen.

This year, as always, has been an absolute privilege to serve as your Federal Member, and I'm incredibly grateful for the hospitality, support, and generosity shown to me throughout 2024.

This year has been filled with countless opportunities to connect with the local clubs, organisations, and individuals who make McEwen such a special place.

In Woodend, it has been great to see the inspiring work of local organisations during visits with the Woodend Men's Shed, Bupa Aged Care Woodend for Aged Care Employees Week, the Woodend RSL to discuss veterans reforms, the Woodend Neighbourhood House to celebrate National Carers Week with the Minister for Aged Care, Annika Smethurst and to the Woodend Historical Society

And, not to forget the many visits to schools and local emergency service agencies with flags and to congratulate them on successful grant funding.

From grassroots initiatives to community events, I've been inspired by the commitment and dedication that so many of you bring to making our community stronger.

I want to personally thank all the clubs, organisations, and volunteers who have given their time and energy to support our local communities. Your commitment does not go unnoticed, and I deeply appreciate your continued efforts to make McEwen a better place for everyone.

As we celebrate the holiday season, I wish you and your loved ones a very Merry Christmas and a New Year filled with health, happiness, and hope. I look forward to continuing to work alongside all of you in 2025 to build an even brighter future for our region.

Best Regards, Rob Mitchell M, Federal Member for McEwen

A message from your West Ward councillors

A new council term has begun, and on behalf of my fellow West Ward Councillors, Cr Kate Kendall and Cr Janet Pearce, we would like to thank you all for your support of the election process and thank all candidates who nominated.

It was great to receive your messages wanting to know more about the role of councillors and what our focus areas are for the upcoming term, and we would love you to stay connected.

Newly elected West Ward Councillor are:

Cr Kate Kendall kkendall@mrsc.vic.gov.au 0400 297 293

Cr Jennifer Anderson janderson@mrsc.vic.gov.au 0408 273 670

Cr Janet Pearce jpearce@mrsc.vic.gov.au 0437 282 096

Staying Connected

We will be organising regular meet and greet sessions during 2025 and welcome your ideas and feedback if you have preferred times for these sessions to take place.

For council-specific questions such as if your bin was not collected or you are concerned about a road, please first contact Council through the following channels:

1. Council website www.mrsc.vic.gov.au where you can lodge requests
2. Phone Council's Customer Service Team on 5422 0333
3. Email Council on mrsc@mrsc.vic.gov.au

16 days of Activism Campaign

The 16 days of Activism Campaign started on 25 November and continues until 10 December – a global initiative to end gender-based violence.

Council held a 'Free to be Me' photo competition, which aims to showcase how challenging restrictive gender stereotypes and expectations can create a safer community. Shortlisted photographs are on exhibition at the Social Foundry, Kyneton and online until 10 December.

For more related activities please visit Council's website.

Festive season activities

Many of our towns are holding festive season celebrations and Christmas Carol events and we hope to attend as many as we can.

We are grateful to the Woodend Traders who are coordinating late night shopping, the Ultimate Woodend Gift Voucher Challenge and tree frames for people to rent and decorate, which encourages residents to buy local as well as spread festive cheer.

Bushfire planning

On a more serious note, please make sure your bushfire plan is up-to-date as we approach bushfire season. More information is available through the CFA and there is now an online tool to get you started www.cfa.vic.gov.au/plan-prepare/before-and-during-a-fire/your-bushfire-plan. Council staff have started making their way around all towns to assess private properties for fire risks. Feel free to contact them if you think you know of an at-risk property.

We wish you all a safe and prosperous festive season and look forward to working with you over the next four years.

SUBMITTED BY CR JENNIFER ANDERSON ON BEHALF OF YOUR WEST WARD COUNCILLORS



Photo: L-R Cr Janet Pearce, Cr Kate Kendall, Cr Jennifer Anderson



VEC formal declaration of results

In response to the Victorian Electoral Commission's formal declaration of results for the 2024, the following candidates are elected: Kate Kendall, Jennifer Anderson and Janet Pearce.

Bernie O'Sullivan, CEO, Macedon Ranges Shire Council said,

"Congratulations to all of our successful Councillor candidates – both new and returning – who have been voted in by the constituents of their respective Wards through the election process."

"We look forward to welcoming and formally inducting Councillors into their roles over the coming weeks and months and working closely with them to support another prosperous and productive four-year term on behalf of the community."

Romer Maud
FAMILY LAWYERS



Expert family law advice and support in the Macedon ranges.

SERVICE AREAS

- | | |
|-----------------------|------------------------------|
| Pre-Separation Advice | Parenting Arrangements |
| Amicable Separation | Binding Financial Agreements |
| Divorce | Collaborative Practice |
| Property Division | |

03 9070 9856 reception@romermaud.com.au
romermaud.com.au

The Back Shed GALLERY
Art Carved Signs Gifts
33 Urquhart St.

Storage WOODEND
Contact Vlad 0400 563 563
E: info@storagewoodend.com.au
22 Wood Street
SECURE SELF STORAGE UNITS

ITS Intelligent Training Solutions
www.its.edu.au
Need your First Aid or CPR Certificate? Go with a trusted local provider!
Our First Aid course will give you the skills and CONFIDENCE to provide initial emergency care using approved first aid principles, with an approach that is easy to understand.
Starting from: \$137 - HLTAID011 - Provide First Aid (including CPR) OR \$95 - Annual CPR Refresher
Locations: Woodend, Kyneton, Romsey, Gisborne, Lancefield & More
Onsite & Corporate Bookings Welcome
Contact us: 03 5415 0204 OR admin@its.edu.au
Delivering First Aid in the Macedon Ranges since 2015!

Your community diary

Always check with organisers about any events listed. To have your event listed on our calendar just send the details to: content@newwoodendstar.org.au

—DECEMBER—

- 4 Electrify 3442—Home Batteries 101
- 4 MRSC Grass Identification Field Day, Malmsbury
- 7 Author Talk Dee White, Woodend Library
- 7 St Mary's Guild street stall
- 7 Woodend Farmers' Market
- 7 Lions Community Market
- 8 KTH events, Tim Rogers in concert
- 10 16 Days of Activism campaign ends
- 10 December Community Lunch, RSL
- 10 Human Rights Day
- 11 Author Talk Kathy Mexted, Woodend Library
- 12 Rotary Dinner Meeting
- 13 Outdoor Cinema, Woodend Cricket Club
- 14 Author Talk Karen Martin, Woodend Library
- 15 WWAF A Cappella Christmas Carols, St Ambrose Church
- 20 Community Carols, on the lawns at St Mary's Woodend
- 22 Lions Christmas Carol
- 24 Christmas Eve
- 25 Christmas Day
- 26 Boxing Day

—JANUARY—

- 1 New Year Day Holiday
- 11 Woodend Farmers' Market
- 11 Lions Community Market
- 16 Rotary Dinner Meeting
- 23 Rotary Dinner Meeting
- 26 Australia Day
- 27 Australia Day observed holiday

—FEBRUARY—

- 1 Woodend Farmers' Market
- 1 Lions Community Market
- 9 Woodend Landcare working bee
- 14 Probus Meeting, Norma Richardson Hall
- 14 Soweto Gospel Choir, KTH
- 14 Valentine's Day

—MARCH—

- 4 Shrove Tuesday
- 1 Woodend Farmers' Market
- 1 Lions Community Market
- 10 Labour Day Holiday

Read us online: www.newwoodendstar.com/view

Kyneton Town Hall events

Soweto Gospel Choir – Hope

7.30-9pm, Friday 14 February 2025

Out of the darkness comes a new dawn! This all-new concert by three-time Grammy® winning Soweto Gospel Choir commemorates South Africa's Freedom Movement and the Civil Rights Movement in the United States.

Bringing joy to all, 'Hope' opens with a rousing program of South African freedom songs that inspired their Rainbow Nation. Then the choir's uplifting performance moves to the United States with beautiful renditions of the music of the Civil Rights Movement, including works by legendary artists Billie Holiday, James Brown, Otis Redding, Curtis Mayfield and the one-and-only, Aretha Franklin. Get ready, 'Hope' is a concert that will live forever in your hearts!

Ash Grunwald

7.30-10pm, Friday 11 April 2025

Renowned for his electrifying live shows, Ash Grunwald has inspired a generation to hit the road in an old van to 'surf by day, jam by night'. The festival favourite brings a high energy, vibrant live show with stacks of guitars and foot-stomping blues. Part troubadour, part storyteller, Ash has been selling out shows all over the country. Don't miss this one at Kyneton Town Hall.

A career spanning 12 studio albums, six Australian Top-50 albums, five ARIA and four AIR Award Nominations, two APRA Awards, and gong for Best International Act at the LA Music Critic Awards in 2014, Grunwald has cemented his status as one of Australia's most exciting and entertaining live musicians.

Ross Noble – Cranium of Curiosities

8-10pm, Tuesday 29 April 2025

Roll up, roll up! Or use a more conventional form of transport to get to the show. It's entirely your choice. Unless you accidentally become trapped in a barrel*.

Should that happen, then just find an incline and start rolling to see the one and only Ross Noble!

He is the Wizard of Waffle, The Rambler Royale, The Noodlers' Noodler, and he's back live on stage to tour a tornado of tangents. What the show will be about is anybody's guess, but that's all part of the fun when you look inside his Cranium of Curiosities.

*We strongly advise trying not to get trapped in a barrel before or during the performance. Despite the expression "barrel of laughs," it may impede your enjoyment of the show and potentially anger a cooper**. **barrel maker. We are fairly certain the mascara mishap music maker Alice Cooper would be fine with it.

Australia's most iconic comedy tour is hitting the road for a huge 27th year! Bringing together the brightest stars from the 2025 Melbourne International Comedy Festival, we're delivering top-tier humour straight to your town!

Featuring a dynamic line-up of comedy legends and fresh faces, this year's Roadshow promises nation-wide happiness. So, grab your friends, lock in your tickets and prepare for a much needed dose of laughter as the 2025 Melbourne International Comedy Festival Roadshow rolls into Kyneton!

Show running time is approximately two hours, including a 20min interval. Performances often contain coarse language, adult themes, sexual references and material that may offend. The show is recommended for people aged 15 years or older. Smoke machine/hazer may be used during this performance.

To purchase tickets to Kyneton Town Hall events, visit mrsc.vic.gov.au/buytickets or call 1300 888 802 (10am-4pm, weekdays).



Get in the holiday spirit: Lions Christmas market & carols

The holiday season is upon us, and we have two wonderful Lions events in December to bring festive cheer to the community. Mark your calendars and join us for these memorable celebrations!

Saturday, 7 December – The Lions Community Market

Kickstart your holiday shopping at the Lions Community Market, now in its new location behind the Neighbourhood House. Held on the same day as the Woodend Farmers Market, this is a fantastic opportunity to find unique Christmas gifts and complete your shopping in one trip. The market will feature a wide variety of stalls, offering everything from handmade crafts to delicious treats. It's the perfect spot to find gifts that are both personal and unique. Lions Christmas cakes and puddings will also be available at the market, and you can purchase them at the Woodend Pharmacy on High Street every day leading up to Christmas.

Sunday, 22 December – Lions Christmas Carols

Bring family and friends to the Lions Christmas Carols event on Sunday, 22 December, from 6pm to 8pm. A free sausage sizzle will start at 5.30pm to warm you up before the festivities begin. All you need to bring is a blanket or chair, and your best singing voices! Join us behind the Community Centre and Library, where a giant stage will be set up, and local musicians will lead us in classic Christmas carols. Santa is also expected to make a special appearance, joined by his friends from the CFA.

We hope to see you there for these festive community gatherings, full of holiday spirit and cheer!

SUBMITTED BY GAIL JONES

Christmas at The Gallery

This has been a busy year at The Gallery with a variety of exhibitions and activities. Those exhibitions included photography, portraits, mixed media, textiles and drawing, finishing in November with our Recycle and Recreate exhibition.

In April and May, The Gallery conducted the Portrait Prize Competition, generously sponsored by Bendigo Bank. (Entry forms and information about next year's competitions will be available in early 2025.) In June, The Gallery was part of the Woodend Winter Arts Festival and in July we held the annual Winter Art to Wear Parade at Jubilee Hall.

All the members of our arts collective thank you for your support throughout the year. We send you the very best season's greetings.

The Gallery is at 684 Mount Macedon Road, Mt. Macedon (behind the Trading Post cafe) and is open 10am to 4pm Friday to Tuesday.

SUBMITTED BY SUE ANTONSON



Woodend Bookshop
Quality second hand books

104 High Street | T: 5407 9181
ed.iron53@gmail.com | 0448 661 373

16,000 cheap quality second hand books covering just about everything

A Cappella Christmas Carols in Woodend

The Woodend Winter Arts Festival will be bringing the Christmas cheer to Woodend this December, as they deliver another incredible musical performance. This event rounds out another highly successful year for WWAF, which has included multiple events outside of their traditional June long weekend program.


You are invited to join them as outstanding chamber choir Ensemble Gombert, directed by John O'Donnell, fill St Ambrose Church with the sound of carols, both old and new.

Hear the pristine voices and tuning of this famed Choir perform popular Christmas carols of many times and places, from the Medieval era to the present day, with much-loved melodies from Europe, the Americas and Australia. Expect old-time favourites along with lots of family favourites too.


Ensemble Gombert are no strangers to Woodend, regularly performing at the Woodend Winter Arts Festival. Founded in 1990, they are passionately committed to delighting audiences with choral performances of the highest standard. The ensemble is noted for its pure intonation and historic approach to choral sound and style.

Don't miss out on this family friendly event, which will take place at St Ambrose Church on Sunday 15 December at 3:00pm.

Tickets are on sale now at woodendwinterartsfestival.org.au




HOLGATE brewhouse

Taproom 

Your new local

Happy Hour on Thursdays from 5pm
Open for lunch every day
Bottleshop open every day

Enter via Anslow St, at rear of historic Holgate Hotel
79 High Street, Woodend holgatebrewhouse.com





Host your end of year function with us!

Locals Night Every Wednesday
We Serve Food All Day
Courtyard & Lounge Bar
Soulful Sunday's 3pm to 5pm
Book Your Table Online

WOODEND CELLAR & BAR

Merry Christmas from the Halliday Family and the team at the Woodend Cellar and Bar.

Reserve Your Table

☎ 03 5427 2228
📍 42 Anslow Street, Woodend
🌐 woodendcellarandbar.com.au

A cellar door offering the best of Local, Australian and International Wines.

- Lucky and James Chocolate
- Christmas Hampers
- Christmas Mixed Dozens
- Shop Online for Local Delivery



Auditions, shows and more at the Mountview Theatre, Macedon

The Mount Players are putting on the stage version of the acclaimed book and movie *The Girl on the Train*, a high-intensity psychological thriller that will have you on the edge of your seat. The show will be staged 9–25 May, 2025.

If you would like to be a part of the show, whether on stage, on backstage crew, costumes, lights, sound etc, please come and join us at the Information Night on Friday 29 November at 7.30pm for nibbles, a drink and a chat. Director Frank Harvey will take you through his vision for the show. Auditions will be held on Saturday 7 December and Sunday 8 December. To register your interest, obtain a copy of the script and to book an audition time, contact Frank Harvey on 0447 199 665. You can still audition without having attended the Information Night!

Our first production for 2025 is the classic, Oscar Wilde's *The Importance of Being Earnest*. Already in full rehearsal, this well-loved comedy will run from 21 February to 9 March.

2024 has seen our Youth Theatre growing into a fun and creative space, and they will wind up the year with their own Youth Theatre Showcase. Go to www.themountplayers.com for full details on their show, auditions and our 2025 season.

The Mount Players would like to say a huge thank you to everyone who has attended our shows in 2024. Without you, we wouldn't have a theatre. We also thank our sponsors, Officebarn Gisborne, Community Bank Gisborne & District, Bradley's Curtains and Blinds, Jellis Craig Woodend and Hanging Rock Winery for their wonderful support.

The Mount Players wish you all a safe, happy Christmas and we look forward to putting on more shows and seeing you in our beautiful theatre in 2025.

SUBMITTED BY KAREN HUNT.

Resonance String Orchestra in 2025

Next year's program includes the following collaborative and innovative projects emblematic of the Resonance experience, which will see our members embrace new musical ideas and contexts and strengthen their own skills as artists.



Big String Day: 29 March

Apprenti Strings members will take part in a Resonance-hosted Big String Day for young string players from Macedon Ranges, Mount Alexander and other neighbouring shires to come together for an immersive day of music-making in Castlemaine, made possible by support from the Ulumbarra Foundation.

The Big String Day will include music and team-building games, whole orchestra sessions and instrument-based tutorials; there'll be time for fun and socialising and the day will finish with a short performance for families. Oh, and there'll be a special Resonance morning tea – of course!

For more details, or to join Apprenti, or Resonance, or our supporters' mailing list, go to the Join link on the Resonance String Orchestra website:

<https://www.resonancestringorchestra.org.au/join-1>



LAWYERS

WOODEND OFFICE

110 High Street,
WOODEND VIC. 3442

T: +61 8290 0277

- Administrative Law / VCAT Proceedings
- Business & Commercial Transactions
- Commercial & Civil Litigation
- Conveyancing & Property
- Criminal Law (including Family Violence & Intervention Matters)
- Family Law
- Franchising Law
- Partnership
- Personal Injuries Litigation
- Powers of Attorney, Guardianship & Administration of Estates
- Retail & Commercial Leases

info@mdmlawyers.com.au

ESSENDON OFFICE

Level 1, 268 Keilor Road
ESSENDON NORTH VIC. 3041
T: 03 9338 8511

THE TINY GALLERY IS NOW OPEN....

I'm delighted to announce that my tiny gallery is now open for exclusive bookings, so you can enjoy my paintings and crafts again.



You can either book the gallery entirely for yourself or invite a private group to browse my original paintings, prints, and gifts in peace.

I am limiting groups to just six people, and appointments are scheduled to last 50 minutes so you and your party can enjoy the tarot, angels and other exhibits on display. I will be there on hand to answer any questions you may have.

BOOK YOUR EXCLUSIVE APPOINTMENT NOW. Email Jahne directly to set up a viewing time for yourself or a group – you can also have a guided tour of her abundant and unusual garden.... Email: yogafirst2@bigpond.com

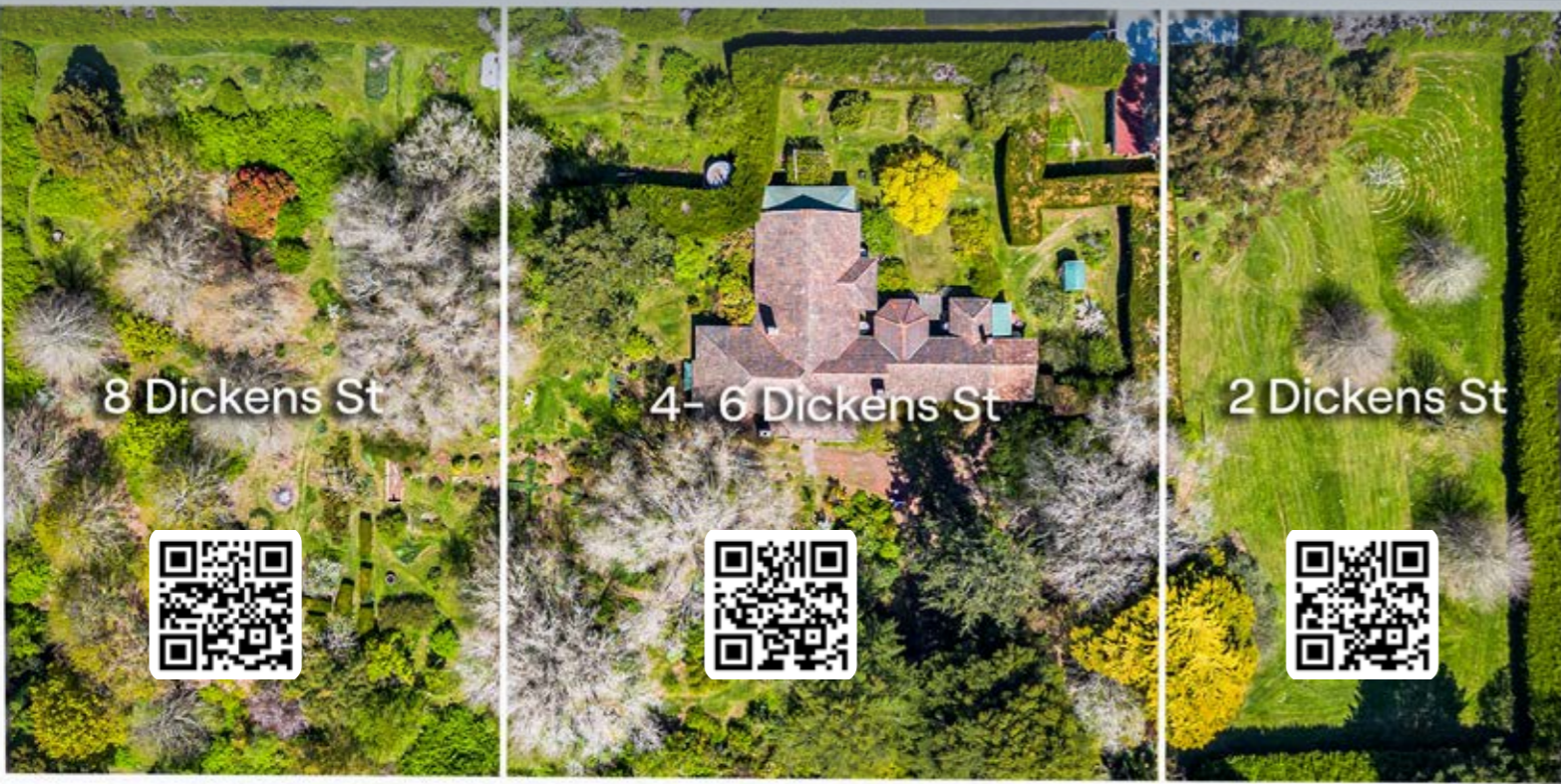
JAHNE HOPE- WILLIAMS
www.jhwilliams.online

Woodend Self Storage (Vic) Pty Ltd



We have 110 storage units in 5 different sizes to meet your needs.
Trailer hire available.
Affordable prices.
7 day accesses.
Insurance available.

Contact Leonie Barker on 0413 869 583 or www.woodendselfstorage.com.au for a quote.



FOR SALE

2-8 Dickens Street, Woodend

For Sale by Expressions of Interest closing Thursday 12th December at 2pm (Unless sold prior)

“Pindari”

A 1930’s Woodend estate of historical significance offered as a whole or in three separate lots

Contact our agent:

Rhys Nuttall

+ 61 438 383 221
rhys@boundrealestate.com.au

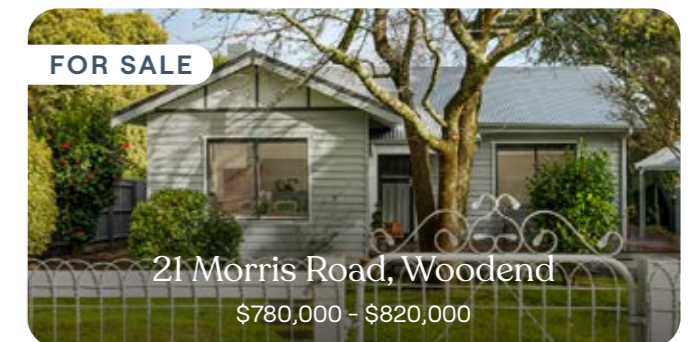
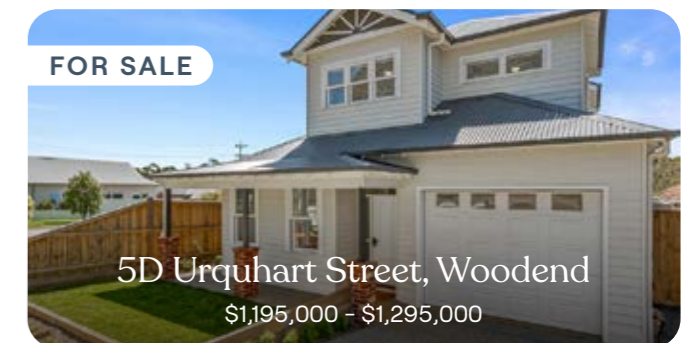
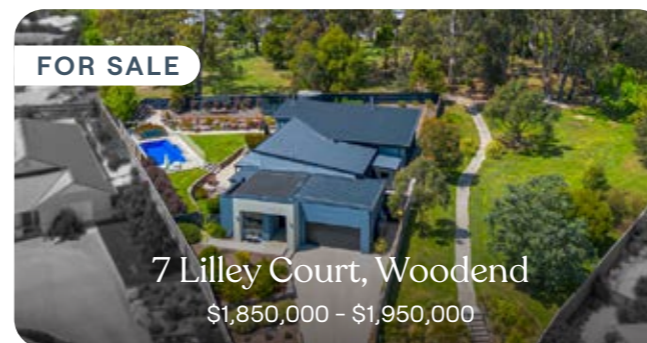
Lynne Payne

0479 068 228
lynne@boundrealestate.com.au



Scan the QR code to visit our website

Contact our local agents about buying or selling your next property.



(RHYS NUTTALL)

0438 383 221
rhys@boundrealestate.com.au

(DAMIEN WALDER)

0439 391 569
damien@boundrealestate.com.au

(LYNNE PAYNE)

0479 068 228
lynne@boundrealestate.com.au

(CAROLYN RYAN)

0407 393 079
carolyn@boundrealestate.com.au

(PAUL BOHAN)

0413 594 224
paul@boundrealestate.com.au

(ALEX WHITE)

0488 990 212
alex@boundrealestate.com.au



Our RT Edgar Gisborne Team

Ray Cashmore and Josie Borg continue to offer their combined 27 years Gisborne real estate experience to the people of Gisborne and the Macedon Ranges. Renowned for their integrity, professionalism and premium service, you are in good hands with these real estate specialists.

Ray Cashmore
0448 271 688
rcashmore@rtedgarmr.com.au

Josie Borg
0448 271 878
jborg@rtedgarmr.com.au

Woodend Wholefoods



Choose a healthy,

Organic Christmas this year.



New name. Same fresh organic produce.

You may have noticed we've changed our name from Apples & Sage Country to Woodend Wholefoods. We think it better represents the fresh, seasonal organic produce we offer.

Ensure you serve the highest-quality, pesticide-free food to your family and friends this Christmas. You'll also be supporting organic farming practices that contribute to the well-being of the environment. Woodend Wholefoods carries one of the largest ranges of Certified Organics in regional Victoria. With over 2000 organic products to choose from, you're sure to find what you're looking for.

81F HIGH ST WOODEND | T 03 5427 4406 | Q WOODENDWHOLEFOODS.COM.AU

Mon - Fri: 9 am - 5 pm Saturday: 9 am - 4 pm

SPEECH THERAPY FOR CHILDREN 0 - 8 YEARS



For children on an NDIS plan, appointments available now in Kyneton, Romsey and Sunbury. Self-referrals welcome.

(03) 5421 1666
admin@scchc.org.au

SUNBURY COBAW COMMUNITY HEALTH
Registered NDIS Provider

We ndis



Speech therapy available at Cobaw

Speech therapy has become available locally for children 0–8 years who are on a National Disability Insurance Scheme plan. Sunbury and Cobaw Community Health are now seeing families at their sites in Kyneton, Sunbury and Romsey and can support children for up to 12 months.

A speech pathologist can help your child with their speech, language and communication, as well as assisting with eating issues such as swallowing. They can also help with a child’s reading and look at alternative ways of communicating.

Families can refer themselves or get a referral from their child’s GP, paediatrician or maternal and child health nurse.

For those families not funded by the NDIS, support is available for children 0–6 years of age. A referral is required from a maternal and child health nurse, the Royal Children’s Hospital, a preschool field officer or local area coordinator.

To find out more, or to book an appointment for your child, call 5421 1666 or email admin@scchc.org.au.

SUBMITTED BY SARAH TURNER



Keep your child safe with free immunisations

Council is dedicated to supporting families with free immunisation services for infants and children eligible under the National Immunisation Program (NIP).

Vaccinating your child is one of the best ways to protect them from serious diseases and contribute to a healthier community.

Our service offers:

- No-cost immunisations: Free immunisations under the NIP.
- Convenient local clinics: Monthly clinics in Gisborne, Kyneton, Woodend, Riddells Creek and Romsey.
- Trusted, qualified staff: Our healthcare team is here to make your child’s immunisation experience a smooth and comfortable one.

Welcome Rory
Chiropractic with Rory is now available
BOOK ONLINE OR CALL TODAY



Chiropractic | Myotherapy | Massage | Acupuncture

MACEDON CHIROPRACTIC
(03) 5426 3945
26 Victoria st, Macedon
www.macedonchiropractic.com.au

For All Your Dog Walking and Pet Sitting Needs

www.woofwalker.net.au



The Woodend Woof Walker

Call Chris 0431 533 509



rangesmedical
182 Station Road, New Gisborne

In December, we are celebrating 10 years of supporting the Macedon Ranges community

WISHING EVERYONE A MERRY AND JOYFUL Christmas

Dr. Jacques de Groot
Dr. Anne Peterson
Dr. Bronwyn Edmunds
Dr. Pritinsh Singh
Dr. Tanya Katz
Dr. Ahmed Al-Obaidi
Dr. Rhian Pickard
Dr. Richard Toh
Dr. Sowmya Asok Kumar

Christmas Hours
Monday 23rd December - 8.30am - 7pm
Tuesday 24th December - 8.30am - 3pm
Wednesday 25th December - Closed
Thursday 26th December - Closed
Friday 27th December - 8.30am - 5pm
Saturday 28th December - 8.30am - 12pm
Monday 30th December - 8.30am - 7pm
Tuesday 31st December - 8.30am - 3pm
Wednesday 1st January - Closed
Thursday 2nd January - 8.30am - 7pm

QR code and **Book Online** button

8373 5420

Instagram and Facebook icons

Celebrating 50 babies and two years of public fertility care

After two years of free public fertility care in Victoria 50 babies have been welcomed into the world and more Victorians have the chance to start the family they want.

Since the service began in 2022, more than 4,300 Victorians have commenced their treatment journey, including more than 600 from regional and rural areas.

Victoria’s public fertility service is also improving access for multicultural communities with more than 20 per cent of people accessing the service speaking a language other than English at home.

As the service enters its third year, it has capacity to help more Victorians start their family, so locals looking to start their fertility journey should speak with their GP or specialist.

This callout is specifically focused on people who will benefit most from the service, including those with financial barriers to accessing private services, rural and regional Victorians, multicultural and multifaith communities and LGBTIQ+ Victorians, and those undergoing medical treatment impacting fertility.

Patients can access a range of free treatments including in-vitro fertilisation, intrauterine insemination or intracytoplasmic sperm injection, as well as fertility preservation measures, such as egg freezing for people undergoing medical treatment for illnesses that may compromise their fertility.

Delivered in partnership with the Royal Women’s Hospital, a number of satellite sites have also opened across the state, including in Bendigo and Ballarat, ensuring more people can access fertility care closer to home and helping hopeful parents cut down on unnecessary travel time and other indirect expenses.

These services are also supported by Australia’s first public egg and sperm bank – opening in July 2023 and located at the Royal Women’s Hospital, it is providing crucial donor services for public fertility care patients.

Featuring state-of-the-art laboratory facilities and staffed with highly qualified fertility experts, altruistic donations are encouraged from Victorians who want to give someone the chance to start or grow their family.

More information visit betterhealth.vic.gov.au/services-support/public-fertility-care-services.

Quotes attributable to Minister for Health and Member for Macedon, Mary-Anne Thomas

“Welcoming a new baby into the world is an incredible experience, but for some Victorians this journey isn’t always straightforward – that is why we making it fairer and easier for more people to start or grow their families.”

“For many families in Macedon – this groundbreaking service will save money and time, and help them realise their dream of starting or growing a family.”

SUBMITTED BY KATE LEE, OFFICE OF MARY-ANNE THOMAS MP

New skin cancer clinic

in Woodend

- ✓ First purpose built skin cancer clinic in Macedon Ranges
- ✓ Accredited Skin Cancer Doctors
- ✓ Fotofinder-World leading Skin Imaging Technology
- ✓ Total Body Photography & Skin Checks
- ✓ No Referral Required

to make a booking call
(03) 9969 5000

44b Anslow Street, Woodend
skingp.com.au



Back to School with

Kyneton Shoes

Every child is expertly and personally fitted with top quality brands.

- Grosby
- Bata
- Surefit
- Wilde
- ROC
- Clarks

Monday - Friday 9am-5pm
Saturday 9am-2pm



23 High Street, Kyneton
03 5422 2090



Your trusted local team, passionate about pets

5427 3737
5 Brooke St, Woodend
www.greencrossvets.com.au

SAVE
on parasite prevention this Spring!

Receive a **BONUS 1PK** when you buy NexGard or Nexgard SPECTRA Dog 3pk*

Receive a **BONUS 2PK** when you buy NexGard or Nexgard SPECTRA Dog 6pk*

PLUS: Your chance to **WIN** A YEAR'S SUPPLY!

NexGard SPECTRA Visit us before 30 November!
*T&Cs apply. While stocks last. Available on dog products only. See www.greencrossvets.com.au/spring-promotions for details

Understanding paralysis ticks: What pet owners need to know

The Macedon Ranges, known for its beautiful dense bushland, also provides an ideal environment for ticks. While paralysis ticks are more commonly encountered in northern Australia, there have been positive cases in Victoria. While active year-round, these ticks become particularly prevalent in spring and early summer, posing a high risk to pets in the area.

Dr Candice Priest, Veterinary Director at Greencross Vets Macedon Ranges, advises pet owners to stay vigilant, noting that the dangers of these ticks are not always immediately obvious.

Why Paralysis Ticks Are Deadly

Paralysis ticks inject a potent neurotoxin that causes progressive paralysis and respiratory depression. If left untreated, this can be fatal, making prompt veterinary care essential.

Tick Prevention Tips

To protect your pets, Dr Priest recommends using tick preventatives year-round. "I suggest giving a preventative, such as Nexgard Spectra, on a monthly basis and ensuring a dose is not missed," she says. Daily tick checks are also critical to catch any that may have attached. Running your fingers through your pet's fur and checking all the nooks and crannies (ie between toes, in ears, behind ears etc) is the easiest way to detect ticks, feeling for any unusual bumps that could be ticks.

Recognising Signs of Tick Paralysis

- Look out for these warning signs of tick paralysis:
- Staggered walking
- Wobbliness
- Weakness or collapsing
- Vomiting
- Changes in bark or meow
- Difficulty breathing

Even if your pet shows no symptoms, bring them to Greencross Vets Macedon Ranges immediately if you find a tick, so we can identify the tick. Symptoms can take time to develop, so early intervention is key to ensuring your pet's safety.

By staying informed and proactive, you can protect your pet from the severe effects of paralysis ticks and keep them safe in the Macedon Ranges area.



Photo: The Greencross team. Back row, left to right: Bradie, Rachel, Dr Candice with dog Scout, Dr Chloe
Front row: Dr Elizabeth and Erin

Whole of life clarity

The decisions you make today will shape the story you tell tomorrow.

- Wills & Estates
- Probate
- Deceased Estate
- Power Of Attorney
- Divorce
- Child Arrangements
- Child Support
- Asset Division
- Family Violence
- Intervention Orders

Phone: 03 5428 8711
Level 1, 45 Hamilton Street, Gisborne
www.mrfl.com.au

October 2024 Council Meeting wrap

The following matters were considered and endorsed at the October 2024 Council Meeting:

Annual Report 2023-24: Council received the Annual Report 2023-24, which provides an overview of Council's performance in the last financial year, including against the Council Plan and Budget for that year.

Highlights for 2023-24 included:

- \$45.9 million of capital works delivered, including Council's biggest-ever single capital works investment in the Macedon Ranges Sports Precinct in New Gisborne
- more than 250,000 metres squared of sealed road upgrades and maintenance carried out, and more than 3,600 sealed road potholes and defects patched
- more than 15,500 tonnes of waste diverted from landfill, saving an estimated \$1.47 million
- enactment of the new Community Local Law 2023, setting out a range of localised regulations in the shire – from permits to rubbish, to pets – for the next 10 years
- adoption of the Romsey Structure Plan, a key planning document that will guide the growth and development of the town until 2050
- 35 community consultations undertaken and more than 1,100 submissions received, on a range of Council initiatives, allowing for them to be contributed to and shaped by the Macedon Ranges community.

The Annual Report will be available to view in the coming weeks at mrsc.vic.gov.au/annual-report and hard copies will be available at Council offices.

Community Directorate Integrated Annual Report: Council noted the Community Directorate

Integrated Annual Report 2023-2024 and Action Plan 2024-2025.

The Report streamlines the annual reporting process and action plans for four of the major strategies and plans within the Community Directorate that support the delivery of Council's Community Vision and Council Plan. These include:

- Municipal Public Health and Wellbeing Plan 2021-2025 (MPHWP)
- Disability Action Plan 2021-2025 (DAP)
- Participate – The Positive Ageing Plan 2020-2025 (PAP)
- Create – The Municipal Early Years Plan 2021-2025

The Community Directorate Integrated Annual Report and Action Plan will be available to view in the coming weeks at mrsc.vic.gov.au/community-plan.

Red Gap Road, Lancefield: Council noted an update to a Council officer's recommendation at the 28 August 2024 Scheduled Council meeting, to correct a historic administrative error in the Council's Asset Management System and the Public Road Register for three segments of Red Gap Road in Lancefield. The matter was deferred to the October 2024 Council Meeting following concerns from residents and other parties.

Council has since conducted further traffic surveys of the area and will now consult with impacted residents and those who have expressed an interest in the matter regarding the survey results, the proposed corrections, and exploring other possible options before progressing the matter further.

Video recordings of past Council meetings are available at webcast.mrsc.vic.gov.au (generally available within two business days of a meeting).

Council to welcome new Director Assets and Operations in the new year

Council is pleased to announce Dominic Testoni as its incoming Director Assets and Operations from early 2025, following a competitive recruitment process.

Serving as CEO at Benalla Rural City Council in north-east Victoria since 2019, Mr Testoni brings a wealth of valuable experience in the local government sector and beyond, having also earlier served as CEO of Limestone Coast Local Government Association in South Australia.

Macedon Ranges Shire Council CEO Bernie O'Sullivan said Mr Testoni's significant experience and track record held him in excellent stead for leading and delivering key portfolios that our local communities rely on every day.

"I congratulate Dominic on his appointment – we are really pleased to be able to welcome someone of his calibre to this key role in our Executive Leadership Team, which oversees many of our key public-facing services such as our capital works, roads, engineering, parks and open space, waste and resource recovery, facility management, and aquatics and fitness," he said.

"As we move closer to welcoming a new term of Council, Dominic's experience developing trusted relationships with staff, Councillors and stakeholders will be valuable. We look forward to welcoming him to Council early in the new year, importantly allowing him ample transition time from his current key role at Benalla."

This appointment fills the position left by the earlier departure in August 2024 of Shane Walden, who became CEO of Golden Plains Shire Council.



Photo: Dominic Testoni

Manicures, pedicures, lash extensions & waxing.

Shop 2/87 High Street Woodend
Phone: 5427 4448 | nailspabeauty.com.au

"Gift voucher" and package QR code

Support • Advice • Solution

Individual Tax Returns
Bookkeeping
Business Returns and Advice

27 Urquhart St, Woodend, Vic 3442
info@rotallieo.com.au
1300 136 733

We can help you with all of your accounting and compliance needs

Holistic Funeral Directors

naturalgrace®

Call 5427 3112 or visit NaturalGrace.com.au

A year of innovation and a fresh start for 2025 with Bradley's Curtains and Blinds!

As we wrap up 2024, we're reflecting on an incredible year filled with growth, innovation, and a commitment to bringing the very best to your homes.

Global Inspiration: Earlier this year, we explored the world's finest window furnishing innovations at the prestigious R&T Show in Germany. The designs, technology, and craftsmanship we discovered have inspired us to raise the bar even further.

A New Look for 2025: We're thrilled to announce that early in the new year, we'll unveil our new-look showroom, showcasing the exceptional products we've handpicked from around the world. From cutting-edge motorized blinds to timeless fabrics and styles, it's all designed to help you transform your space like never before.

What's Next for Your Home? As we look ahead to 2025, it's the perfect time to start planning your next project. Whether you're after style, functionality, or a mix of both, we're here to guide you every step of the way.

Visit us or get in touch to start your journey:

From all of us at Bradley's Curtains and Blinds, thank you for an amazing 2024. Wishing you and your family a safe, joyful holiday season and a stylish start to 2025!



72 High Street, Woodend 3442
t 03 5427 2361
e bradleyscurtains@outlook.com
www.bradleyscurtains.com

GEORGIE PURCELL MP

**YOUR MEMBER FOR NORTHERN VICTORIA.
HERE FOR ANIMALS, PEOPLE AND THE PLANET.**



Georgie Purcell Member of the Legislative Council
3/80 High Street Woodend VIC 3442 | 03 5427 2444
georgie.purcell@parliament.vic.gov.au | @georgie.purcell.ajp



Boosting housing for more regional workers

More regional businesses will be able to attract the workers they need, with another round of the Regional Worker Accommodation Fund now open.

Member for Macedon, Mary-Anne Thomas MP today welcomed the opening of applications for this program's second round.

The Regional Worker Accommodation Fund supports shovel-ready projects, with co-investment from private businesses, industries, regional councils, or local community groups to deliver the worker housing that local industries and workforces need to support communities in regional Victoria to thrive.

Eligible local housing projects will be fit-for-purpose to meet the skills needs of key sectors such as health, agriculture, education, manufacturing, and tourism – from self-contained units, worker villages, family dwellings, shared accommodation, and studios – and will be unique to the needs of the local community.

Regional Victorian cities and towns that have robust, shovel-ready ideas in partnership with local business and industry are strongly encouraged to apply in this second round.

The opening of applications for Round 2 comes on the back of last month's announcement of funding for more than 20 successful projects that unlock nearly \$250 million in combined private and public investment through the program's first round, boosting affordable housing options for workers and their families.

The Regional Worker Accommodation Fund is part a \$45 billion investment in regional and rural Victoria since 2014. The fund is one of the ways regional and rural Victorian cities and towns are being becoming even better places to live, work, stay, and play.

"This program will help our communities in Macedon secure much-needed housing for local workers, supporting regional businesses to grow and thrive," said Ms Thomas.

Applications will open until Friday, 31 January. For more information about the fund, visit rdv.vic.gov.au/rwaf.

SUBMITTED BY SUSANNE WEST OFFICE OF MARY-ANNE THOMAS MP

ADVERTISEMENT

**WISHING YOU
A SAFE + MERRY
HOLIDAY SEASON**

Mary-Anne Thomas MP
Member for Macedon

☎ 5428 2138
🌐 mary-annethomas.com.au

Scan to contact me

Authorised by MA Thomas, Shop 14, Nexus Centre, 9 Goode Street, Gisborne

New phonics program in the education state

Victorian students will remain the best performers in the country through the delivery of mandatory phonics in all Victorian classrooms.

Phonics Plus provides schools with a comprehensive approach to teaching reading using the evidence-based systematic synthetic phonics approach. The resources include a detailed scope and sequence program a comprehensive set of Phonics Plus lesson plans that include 25 minutes of daily and explicit phonics.

The first tranche of the lesson plans have been released, with further lesson plans available for Prep teachers later this year, and for Grades 1 and 2 in the first half of 2025.

The lesson plans have been developed by current teachers and school leaders and will ensure that the excellent teaching practice evident in many of our schools is evident in every school. The lesson plans align with the Victorian curriculum and will also contribute to reducing the workload of teachers by ensuring they can access ready-made high quality classroom resources, delivery of high-quality teaching in every school, backed by evidence and research.

Mary-Anne Thomas, Member for Macedon said, "We are so proud of our students in Macedon and we're making sure that every child has access to a worldclass education ..."

SUBMITTED BY KATE LEE, OFFICE OF MARY-ANNE THOMAS, MEMBER FOR MACEDON

JSLAW Barristers & Solicitors



"Experienced local Lawyers who listen, understand and advise"

Specialising in family law - parenting and property, criminal law, intervention orders - family violence

T: 03 5444 1181 E: admin@jslaw.com.au
A: Woodend - 2/34 Urquhart Street
A: Bendigo - 72 Queen Street
w: www.jslaw.com.au

Liability limited by a scheme approved under Professional Standards Legislation



Japanese-style head spa, facials, massage

Wed - Sat | 9.30am - 5.00pm
Sunday | 9.30am - 4.00pm
Mon - Tues | Closed

WELLBEING
SPA & BEAUTY
Macedon Ranges

Bookings: 5426 3008 or wellbeingbeauty.com.au



"Gift voucher" and package QR code

Funeral Directors

Caring for the Woodend community



A Personal Approach

TJ Scott & Son has been a trusted family business since 1938, with the experience and values to support you during difficult times.

TJ SCOTT & SON
FUNERAL DIRECTORS

KYNETON
5 Piper St
Kyneton
03 5422 6455

GISBORNE
6/50 Aitken St
Gisborne
03 5428 4155

KILMORE
23 Sydney St
Kilmore
03 5782 1112



GISBORNE SMASH REPAIRS

Your Local, Trusted Experts
in Accident Repairs & Towing

- » Quality Repairs
- » Stress-Free Accident Solutions
- » 24-Hour Towing
- » For Locals, From Locals

Providing high quality vehicle repairs and towing to the Macedon Ranges and surrounds for over 20 years



gisbornesmashrepairs.com.au • 5428 8078 • 38 Sauer Road, New Gisborne

TERRY'S GROUND CREW

0400 909 303

TGC'S CHECKLIST ✓

- Landscape projects
- Fire prevention cleanup
- Large scale mechanical raking
- Paddock slashing
- Driveway renovation
- Confined space excavation
- Gorse and blackberry removal
- Mowing and brushcutting
- Window cleaning
- Gutter cleaning
- Pre-sale property preparation
- ALL THE HARD STUFF**

FAST RESPONSE
www.terrysgroundcrew.com.au

*No time...too much to do...call the crew
Enjoy your precious weekends.*



31 Brooke Street
Open 7 days



During these summer holidays pop in for special deals across all our fabulous ranges.

Starting with great prices on all big bags of Advance Dog Food.

Open all summer except public holidays



Look forward to seeing you all soon out and about in the sunshine and thanks again for all the local support.

Country Living Covered
0436 690 357



WOODEND WELLNESS

Come and indulge yourself or a loved one with some well deserved time out this festive season
Call or msg us to secure your appointment

Natalie Taranto
0402534983
*Deep Tissue/Relaxation/Energy Balance Massage
*Rebirthing Breathwork
*Infrared Sauna

Gretl Moser
0421458108
*Remedial Massage Therapy
*Sports Massage
*Injury rehabilitation Massage
*Kinesio Taping

Dr. Danielle Taranto
Chinese Medicine
0434677992
*Acupuncture
*Cosmetic Acupuncture
*Cupping and Gua Sha
*Tui Na (Chinese Massage)
*Japanese Moxibustion
*Herbal Medicine

Gift Vouchers Available
www.woodendwellness.com

Upgrade your home with Evolve Windows



- REDUCE ENERGY CONSUMPTION & SAVE \$\$\$
- COOLER IN SUMMER & WARMER IN WINTER
- RANGE OF THERMALLY IMPROVED FRAMES AVAILABLE
- LOCAL BUSINESS & AUSTRALIAN MADE

2024 AGWA DESIGN AWARDS WINNER Victoria

COME & SEE OUR AWARD WINNING SHOWROOM!

EVOLVEWINDOWS evolvewindows.com.au

48 McDougall Road
SUNBURY
03 8746 9777



WOODEND BUILDING AND LANDSCAPING
COVERING ALL GROUNDS
new builds • renovations • landscaping
Phone: 0458 879 386
woodendbuildingandlandscaping@gmail.com

Transform Your Space with Woodend's All-in-One Solution for Landscaping and Building

Woodend Building & Landscaping, a local company, offers professional services to enhance your outdoor and indoor spaces. Led by Arkin and his team, skilled landscapers and qualified builders collaborate to bring your vision to life.

From lush gardens to custom kitchens, they specialize in creating personalised sanctuaries tailored to your preferences and lifestyle.

By integrating sustainable practices and eco-friendly materials, such as native plants and water-saving irrigation systems, Woodend Building and Landscaping prioritises creating beautiful and enduring spaces. As a local business, they take pride in supporting the community by employing local tradespeople and using local suppliers.

Enhance your outdoor living or indoor spaces today by consulting with Woodend Building & Landscaping. Let them help you unlock the full potential of your property, turning your dreams into reality, one project at a time.

CDM
EARTHMOVING & LANDSCAPING

For all your driveway and landscape construction needs

BOBCAT | EXCAVATOR TRUCK HIRE

Contact 0417 331 085
craig@bobcatcraig.com

- Driveways New & Repair
- Paving & Turfing
- Rockeries
- Site Cuts
- Retaining Walls
- Garden Construction
- Post Holes
- Watering Systems & Drainage



“STILL GETTING A KICK OUT OF FOOTY”

Supporters make our club the best in the league

As another great year comes to a close for the Woodend Masters Football Club, I, as President, am taking this opportunity to reflect.

This was my first season as President of this proud little footy club, and I have genuinely enjoyed the experience. It has made me appreciate how important this club is to many blokes in Woodend and beyond, for different reasons.

I moved to Woodend a few years ago with no family here or connections, but I read about the Masters in this paper, and it appealed to me as an opportunity to meet people and keep fit.

Coming from a rugby league background, I had little experience playing footy, and I was nervous. I shouldn't have been. The minute I rocked up to training, I was made to feel welcome with absolutely no judgement of my (lack of) skills or experience, even when I was a bit sideways. I soon learned that being on a football team again was great for my physical fitness, mental health, social life (and great camping trips!), and business networking, and I quickly became part of the local community.

Masters football is footy for fun. We play for camaraderie and a place to switch off life's stresses. That's why our club continues to grow and remain strong in a league where clubs from regional cities have struggled to field a team. Our membership base is strong, with 45 registered members, and we welcomed nine

new members this season. Not everyone plays, not everyone trains, some just train, and some just rock up when there is free food and drinks. All are welcome.

We continued to give back to our community this year.

We raised money to contribute to a scoreboard upgrade at Gilbert Gordon Oval, and our fellas were always on hand to help the Senior club at home games by working the BBQ. We donated and decorated a Christmas tree on High St – a great community initiative led by Nic Jacks, Andy Scicluna, and Nikki Barker, who have been involved with our club since it started nine years ago. We made some substantial donations to local families in tough times and raised over \$500 for Beyond Blue.

But closer to our heart we cut, split and stacked 3m of firewood for our former team manager and loyal supporter Scotty and his wife Helen, as well as helping upgrade access to his home after a long stay in hospital. We look after our teammates on and off the field!

On the field, we won a few games and lost a few, but most importantly, we beat Gisborne in the last game. A local rivalry that both clubs look forward to.

Behind the scenes keeps this club thriving. I wish the committee and volunteers a massive thanks for putting their hand up to help this year: Simon, Reedy, Franko, Chilts, Jules, Chewy, Khoney, Smudge, Saint Dodds,

Showbags, Raynor, Mr Fisty, Spud, Al and Daz.

Footy clubs like us do not exist without the support of local business.

Woodend Masters would like to thank our generous long-time sponsors: Holgate Brewhouse; Natural Grace; MDM Lawyers; Woodend Produce Store; Macedon Chiropractic; Terry White Chemist – Woodend; Hunters Motors and Mowers; IN Place Builders; The Pig and Whistle Hotel; Bound Real Estate.

We don't play for trophies and glory at our age - we play for meat trays and gift vouchers.

Thank you to our match day sponsors for providing the highly sought after game day awards: Black Forest Meats; Woodend Charcoal Chicken; Sizzler Restobar; Ritchies IGA.

We are in great shape (not us, the club) as we get set to celebrate our 10th year in 2025. We are back training, and I encourage any bloke aged 35 and older to join us, no matter your skill or level of commitment. We just get a kick out of footy, and we know you will too!

Thank you, everyone. I had a ball, and I hope you did too!

Sam Gibbs, President

For more information woodendmasters@gmail.com



Woodend Junior Hawks Pre-season update.



Wow! It's hard to believe I am writing an article about pre-season training!

Down at the Junior Nest we have been busy having meetings, finding grants and recruiting new volunteers. With one General Committee meeting under our belt and our amazing volunteers stepping up, 2025 looks to be another fun and successful year.

I'd like to thank everyone who has volunteered to take on the following speciality roles for the club; with two of our long-term members stepping down last year, there were big shoes to fill, however with Jacinta Stevens and Cam Creer both stepping into these roles the Junior Club is very excited. Jacinta will shadow Sally Watt for the season 2025 to take on the Registrar role, and Cam has kindly taken on the role of ERC, First Aid and Child Safety.

Madeleine Blake has also moved into our social media role to keep you up to date with what's going on around the club, which is awesome.

Travis Leggett is taking a break from coaching this year and has kindly taken on our social functions role, again this is fabulous, as last year we didn't have time to do any social functions, so watch this space!

Registrations are open

Registrations opened on 1 November for football. We are offering an early bird discount for U9 and U11+ registrations. Use the codes below to apply the discount.

<https://www.playhq.com/afl/register/659596>

So jump on and register to grab the discount.

Under 11-17: Early Bird voucher available until 9 February 2025; voucher number: 5F593465

Under 9s: Early Bird Voucher available until 9 February 2025; voucher number: ABBA01A4



Scan Me NOW to Register

The committee would like to say congratulations to our newly appointed football coaches.

U17 coach Paul Podbury. We are excited to share the news that Paul Podbury will coach the U17s footy team in 2025!

Pods is a very familiar face at the Hawks. He is the current Senior Football Club President and a Life member. He has been a senior player at the club for 20 years, has been an assistant senior coach on multiple occasions and has taken on various other roles around the club, including as Football Manager. How lucky are we to have someone with Pods' credentials coach our U17s! Pods looks forward to working with the U17 group to build on their impressive 2024 season.

Again, we are super excited to share this news for the U15's footy

team in 2025.

Rob has been around the junior and senior club for several years, starting his football career in senior football at Albion, Woodend and Trentham. Having been an assistant coach or coach since 1992 and bringing home the U15 Premiership last year, we look forward to welcoming Rob back to the club for another season.

Andrew is very excited to be back at the club for 2025. Andrew believes this age group is at a crucial phase in their development as junior footballers, and coaching them requires great energy, a solid understanding of individual strengths and areas for improvement, as well as building a strong team-first ethos. Andrew was assistant coach last year for the U13 side; we are thrilled to have him back at the club for another season as well.



Photos: U15 Co-Coaches Rob Ferguson and Andrew McTrusty

Netball News

Netball registrations open January 2025

Expressions of interest are now open for the 2025 season. We have already had a fabulous response, however if you are interested and haven't sent through an EOI, please send an email directly to netball@woodendhawks.com.au. (As teams this year will be capped at 9 players per team it's first in, best dressed!)

Netball registrations will open early in the New Year so keep an eye on your emails and our socials for updates and a registration link for an Early Bird Discount.

We still have some coaching vacancies, so if you love the game of netball and are passionate about developing both the individual and the team, we'd love to hear from you.

Pre-season training

Pre-season training is now underway for the U17's, at Buffalo from 5pm on Wednesday 4 and 11 December.

Pop on down and say g'day to Pods and get ready for a great season ahead. All new and existing players are encouraged to attend the pre-season sessions.

SUBMITTED BY DANIELLE GALLE, WJFNC PRESIDENT

Proudly sponsored by



HOLGATE brewhouse





The new Pennant season gets rolling!

The Club has teams in both Midweek (Tuesdays) and Saturday competitions, starting in October and going all the way through to March, with a break over the Christmas period. Results have been mixed thus far, so we are naturally hoping that we can get as many teams as possible into the finals.

At the time of writing, all teams were performing well, with several battling for the Top Four or even top of the ladder position.

We have also started our Club Championship events, with the Mens and Ladies Singles Championships to be completed by late December. Other events will continue in the New Year including the Consolation Singles, Mens Pairs, Ladies Pairs, Mixed Pairs, 21 UP and 100 UP. Good luck to all competitors.

Book now for Barefoot Bowls or your Christmas function

Last year, we had a very successful summer season of Barefoot Bowls. Several local clubs and businesses also incorporated this into their Christmas Parties.

Social/Barefoot Bowls is available all year round at the Woodend Bowling Club, but is obviously more fun and enjoyable in the warmer months.

You can book in for a few hours of fun, a great party, work Christmas party, fundraising and so much more.

We can provide all the bowls and equipment you will need. We have a well-stocked, fully licensed bar, which can be opened with people to serve you, and you pay our very reasonable Crackerjack bowls club prices.

Bookings are essential and booking forms are available on our website or directly from the club.

Come on down for a free trial

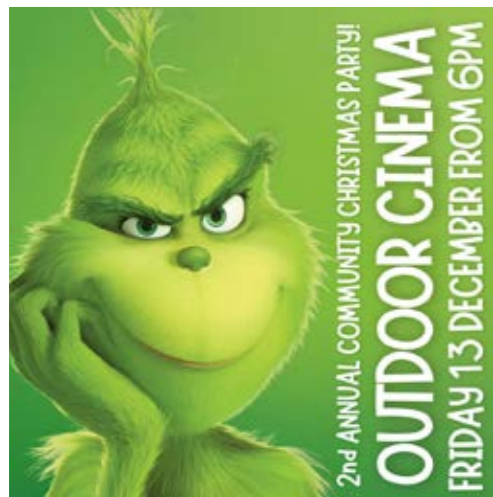
If you have wondered what playing lawn bowls is like, why not come down to the Club and have a go.

We can provide everything you need, the bowls and important guidance from one of our experienced players. And it's free!

Check out our Website and Facebook page

For more information, please call 5407 9220, visit our website at www.woodendbowlsclub.weebly.com. You can also follow us on Facebook.

SUBMITTED BY MIKE DORNAU, PRESIDENT WOODEND BOWLS CLUB



What another exciting month it has been!

We are off to a great start to the season. Shoutout to our first girls Under-13 team, who are all having fun, winning two out of three games so far (one just narrowly to a much more experienced Bacchus Marsh team).



Some other highlights include:

Family Burger Night, held last month, was a huge success with 100+ burgers served! It was great to see so many new families.

Cricket Blast has just started on Monday nights at Gilbert Gordon between 5 and 6pm. Ages 5-8. Boys and Girls welcome, and registrations are still open.

Senior Cricket has had a strong start across all grades. At the time of writing, our First XI team is on top of the ladder, with captain Marcus Stewart leading the way with 120 runs against Sunbury United.

We have just introduced our 5th Senior team and are looking for players! We encourage Father-Son/Daughter combinations to come and play with us!



Paul Jamieson and Grant McDonald now share the most senior games played at the Woodend Cricket Club. At the time of writing, it's 434 games each, and they have plenty more left in them!

Warren Else moves into 4th position for All-Time Wickets taken for the club, moving ahead of Legend Kevin Sullivan.

Upcoming event (add to your calendar, you won't want to miss this!)

Christmas Party – Movie Night showing 'The Grinch' on Friday December 13 from 6pm. Free event! We're inviting the whole community to come and join us and share in the Christmas Spirit. Plus a special visit from Santa! Look out for updates on our socials for more information.

Please follow our Facebook page (www.facebook.com/WoodendCricketClub), visit our website (www.woodendcricketclub.org) or get in touch by email woodendcricketclub@gmail.com

SUBMITTED BY JENNIFER BALDWIN

Woodend Hawks Basketball Club – a successful year and a strong future

The Woodend Hawks Basketball Club has wrapped up another successful year, marking its twelfth year since formation. In his annual report, outgoing President, Andy Condron acknowledged the tireless efforts of the committee members, coaches, and team managers who play pivotal roles in the club's achievements. There are currently 270 players representing Woodend Hawks in the Sunbury Basketball Association (SBA) 2024/25 Summer Season.

"This year has been an outstanding example of teamwork and dedication," Andy said. "Our committee members have been crucial in driving the club forward and ensuring a positive experience for all involved."

Andy has capably overseen the club's growth over the past three years, navigating the significant changes in the local basketball landscape, including the opening of the Macedon Ranges Regional Sports Precinct, changes in leadership at SBA, and the introduction of new competitions for U10's and U21's.

Looking ahead, the club is well-positioned for continued success with record participation and a strong, supportive community. Andy reflected on the club's journey, from inception starting with a single boys U12 team to current day 35 teams competing across seven age groups, and expressed his gratitude for the opportunity to lead the club. "It has been transformative, and I have no regrets about the part I've played, along with so many others, in this journey," he said.

Andy is confident in the future of the club, noting that a new generation of leaders are ready to take the helm. "The next committee is well-equipped to continue the great work that has been done, and I have no doubt that they will lead the Woodend Hawks to even greater heights."

The club is excited to hand over leadership to these new volunteers ensuring the Woodend Hawks remains a thriving, inclusive, and supportive community for basketball players providing development opportunities at all levels.

A new committee was elected at the club's recent AGM, including President Bruce Clark. The committee would like to thank Andy as well as other outgoing committee members Peta Rankin, Melinda Rollinson and Tina Velisek for their significant contributions to the Woodend Hawks Basketball Club and basketball in our region.

Visit www.woodendhawksbasketball.org.au for information on the Club.

SUBMITTED BY HELEN MORRONGIELLO



Photo: Long-serving outgoing Hawks president, Andy Condron, with one of the early Woodend Hawks teams



Photo: One of the new Under 10 teams, welcomed to the club this season—our youngest and newest Hawks!



Photo: U10 girls Hawks 24_25 season

Woodend Hanging Rock Petanque Club

Well, our summer season, which started with the President's Cup in October as daylight saving began, has certainly taken off with enthusiasm. With 30 or so members playing each Thursday at Hanging Rock and a few less at the Old Racecourse in Woodend on Monday afternoons.

Down at the Old Racecourse, members are keen to try out their skills in the sunshine, though it gets chilly as the afternoon proceeds.

It is a bit more casual this year as numbers fluctuate so much, with members travelling and others just not making it that day for various reasons!

On Thursday afternoons at Hanging Rock, we are getting about 30-35 members turning up for three games of pétanque and a delicious BBQ put on by various members. There is a roster, so different

members each week think up what they are going to feed hungry pétanque players. So, we get a diverse menu, which is good for all.

Each week for the last month there have been many tournaments all around the state. With the Grampians Open Triples, (played with two players per team), Ballarat Open Triples and Weird International Masters Triples and this weekend it will be the 30th Anniversary of the Pyrenees Petanque Club in Avoca, in which nine of our members will be competing.

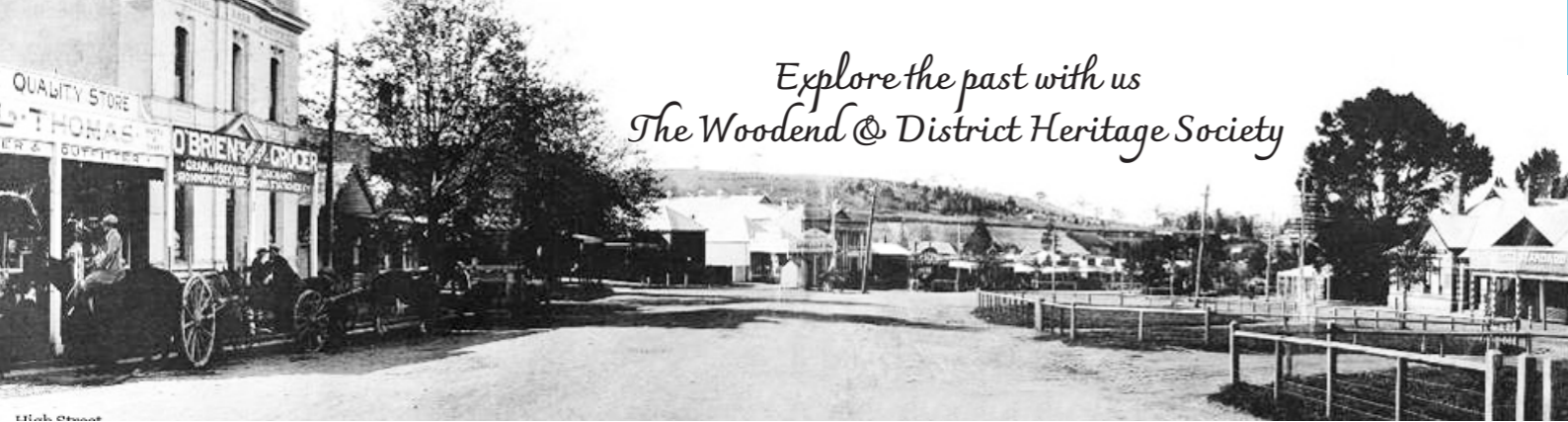
Each weekend, several of our members travel to these events to represent our club. There are some winners and losers, but all play the best pétanque to try and bring home the trophy!

Next Sunday, Woodend Hanging Rock Pétanque Club is holding their Annual Mixed Triples Tournament with 33 teams registered. It should be a great day, also with some winners and losers from around the state.

Come and see what this funny game is all about!

SUBMITTED BY LOUISE POTTER

Explore the past with us
The Woodend & District Heritage Society



Rural Education 1870s to 1940s

Although basic education was made compulsory in Victoria in 1871, until the 1940s, rural children attended primary schools which opened and closed depending on the numbers enrolled, much to the chagrin of many parents. Ashbourne School was a case in point. Seven was supposed to be the required number of pupils, and school hours varied between full time, part time and closure. Initially, some parents such as Joseph Muntz and Thomas Speechley in Ashbourne donated land and huts in a desperate effort to provide their children with some schooling. In 1863, Thomas Thrum in Chanters Lane had already donated an acre of his land, built a weatherboard hut and employed his niece to teach his children and those of any interested neighbours.

Photo 730: Teacher and children at the Upper Campaspe (Ashbourne) State School No: 1333. The "Woodend Star" reported in 1901 that Upper Campaspe was to get a new school building. Clothing suggests that this photograph was probably taken not long after that date. Many other newspaper reports give long lists of students names.



Difficulty in getting to school was another reason that children sometimes stayed home. In 1909, Mr E. Manson, the teacher at Upper Campaspe (Ashbourne), wrote that the area had experienced the wettest winter ever, with 18 and a half inches of rain between 20 April and 20 August. Paddocks were soaked and roads covered with water. Even the baker had had difficulty getting out. Bridie Dullard from Ashbourne remembered walking across paddocks and over creeks and scrambling through fences to get to school. Those children who rode a pony to school at least had relatively dry feet.

In 1939, when Ashbourne school was threatened with closure, having only four pupils, Mrs George Kellett wrote to the Department in desperation, saying that correspondence schooling was too hard and that, if Ashbourne closed, travelling to Chanters Lane school would be too difficult. The road was appalling, and the children would have to cross the river. Her plea was ignored, the school closed, and the remaining children had to go to Woodend.

However, by 1942, enough new families had arrived in Ashbourne, and some parents asked a local retired teacher, Louise Porker, to return to teaching at Ashbourne, as there was little hope of the Department providing a teacher. The school closed again in the 1950s for a few years, reopened in 1961, and finally closed in 1968, with the children going to Woodend Primary on better roads and transport.



Photo 2414: Ashbourne School in March 1996. Photo taken by John CHANDLER who attended the school from about age 7-14 yrs. He left the school on the 22nd October 1949.

SUBMITTED BY JANE HOLT

ARBORIST

Josh Nicholas | 0431 764 750
Professional Arborists servicing the Macedon Ranges
jueshuex@yahoo.com | thetreedavinci.com.au

CARPENTRY SERVICES

Paul Gaskin
Qualified Carpenter
0438 440 986

Decks, Pergolas
Bathrooms, Renovations
& all your carpentry needs,
throughout the
Macedon Ranges
Free quotes
paulgaskin12@yahoo.com.au

DRAFTING SERVICES

DESIGN AND DRAFTING SERVICE
Construction plans
Design concepts
Town planning applications

With over 25yrs experience
servicing the Macedon Ranges and beyond
Brett Franke: Registered Building Practitioner
Call Brett 0408 054 472

HANDYMAN SERVICES

HANDYMAN SERVICE
Servicing the Macedon Ranges
honest, reliable, friendly and local

Phone Peter
0431 252 477

Minor repairs Dripping Taps
Basic carpentry Gardening
Fence repairs Painting
Mowing Odd Jobs

LANDSCAPING

Aghent Landscapes

Landscape design | Paving
Decking | Pergolas | Planting
Retaining walls | Lighting
Irrigation | Real & artificial turf
All excavation and bobcat works
Contact Adam for a FREE quote 0424 033 087
aghent@hotmail.com
www.aghentlandscapes.com

LANDSCAPING

CALL TODD

Landscaping and Garden Maintenance
retaining walls and steps | paths | ponds
fencing and gates | steel edging
irrigation | decking | pet enclosures
green houses | mowing & general maintenance

1300 768 599

PAINTING

GEE'S Painting etc.

Call Steven
0402 079 482

PHONE & COMPUTER REPAIRS

GISBORNE PHONE & COMPUTER REPAIRS

- screen repairs
- water damage
- used phones
- game consoles repair
- battery replacement
- unlocking

M: 0468 844 722
Shop 16A, Gisborne Village Shopping Centre
gisbornephones@gmail.com

PLUMBING

LCT Plumbing SOLUTIONS

Contact us for all your plumbing solutions on
0437 249 683
lctplumbingsolutions@gmail.com

PLUMBING & GAS FITTING

MURPHYS PLUMBING VIC

Hot Water Units - Gas Fitting - Split Systems
Hydronic Heating - Rain Water Systems
Bathroom & Kitchen Renovations

Servicing Macedon Ranges - No job too small
Paul Murphy 0438 298 659

RENOVATIONS AND HOUSE EXTENSIONS

TYLDEN PRO BUILD

RENOVATIONS
EXTENSIONS
20 YEARS EXPERIENCE

Call Sam 0413 275 661
Email: tyldenprobuild@gmail.com

TIMBER WINDOWS & DOORS

Castlemaine Timber WINDOWS + DOORS

Standard & Custom Sizes

Matt 0432 674 536
castlemainetwd@gmail.com

TREE SERVICES

A&P Tree Services

- tree pruning / removal
- stump removal
- tree planting / transplanting
- rope & harness climbing
- confined space removal
- fully insured

Professional commercial & residential tree maintenance, all work carried out by qualified arborist
call Mitchell **0448 032 003**

TAXI SERVICES

Crown Cabs

Catch a Cab - Catch a Crown Cab

Bookings: 1300 12 13 14
www.crowncabs.com.au

TREE SERVICES

RANGES WOOD CUTTING

Call Jamie on:
0474 704 615



A fantastic night at the Junior School Showcase!

The SHC Junior School Showcase, held on 17 October, provided an opportunity for parents, family and friends to view the amazing project work of our Junior School students. As you can see from these images, the level of student work was, simply phenomenal. Details on the various projects are outlined below.

Year 9 Major Projects

This is a longstanding tradition at Sacred Heart College. Each year, students pursue an area of their own passion and interest, to produce project items that celebrate their unique gifts and talents. The project fosters skills in planning, time-management and design, with the presentation evening at the Junior School Showcase being a celebration of all that has been achieved.

What teachers enjoy the most about the evening is seeing the journey of the Year 9 students, the new skills learned, the boost in the student's confidence when the goals were achieved, and most of all, the proud look of the students when parents and other students asked them about their projects.

Year 8 – 'Make a Difference' (MAD) Inquiry Project

This year, the Year 8 students worked tirelessly to both prepare and present their Make a Difference (MAD) inquiry projects for the recent Junior Showcase evening.

This project is completed over an entire term of Religious Education classes and requires students to choose either an environmental or social issue to research and study. They are called to make a difference to their chosen issue.

The showcase evening allowed the Year 8 students to share their research and work with parents, friends, and the SHC community. This was both a celebration of the work of the students, as well as a chance to come together as a community.

Year 7 – Project Respect

During Year 7 our students focus on and explore the Mercy Value 'Respect'. In doing so they develop a deep understanding of how respect is connected and essential to their relationships, learning and the school environment.

The Year 7's work in Project Respect has been divided into three areas:

- a class campaign to learn about what makes successful relationships at Sacred Heart

- an individual reflection on their start to secondary school in a portfolio called 'My Learning Journey'
- involvement in an environment survey focusing on our College grounds, to aid data collection in support of our sustainability goals.

The evening was a wonderful celebration of learning, displaying the growth achieved by students in their first year of secondary schooling. The Year 7 team thoroughly enjoyed having so many of our families visit. Seeing our student's pride during the process of reflection gives us great joy.



Woodend Hardware



We would like to wish all our customers a Merry Christmas and safe New Year.

Shop 7, 130 High Street
5427 2314

HAPPY CHRISTMAS



Thank you to all our customers for your support in 2024
We close on 23 December and open 2 January

BOUND

Season Greetings from the BOUND team. Wishing all a very Merry Christmas and a safe and happy New Year.

(BOUNDREALESTATE.COM.AU)



Learn. Care. flourish



Merry Christmas

Sacred Heart College wishes all in the Woodend community and surrounds a peaceful and joyous Christmas.

Congratulations Class of 2024

We congratulate our wonderful Year 12 students, the 'Class of 2024', on their achievements. We are confident their results and selected pathways will lead the way to rewarding futures.





**Woodend
pharmacy**

Wishing you a very Merry Christmas and a happy, healthy and prosperous New Year and thank you for your support in 2023



116/118 High Street Woodend | 5427 2410



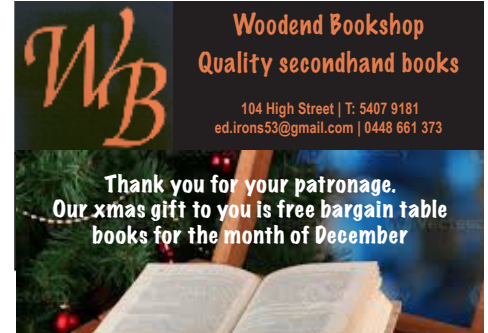
wishing you a wonderful & safe festive season




WISHING MACEDON RANGES A
MERRY CHRISTMAS
AND A SAFE
HAPPY NEW YEAR

 Woodend
Dental Group

102 High Street, Woodend
5427 2433
woodend_dentalgroup



Woodend Bookshop
Quality secondhand books

104 High Street | T: 5407 9181
ed.irons53@gmail.com | 0448 661 373

Thank you for your patronage.
Our xmas gift to you is free bargain table books for the month of December



Wishing Woodend a wonderful Christmas season.

Nellie's shed will be open every day until Christmas for all of your coffee, garden and gifting needs.

100 High Street



MERRY CHRISTMAS
THINK ALIKE STORE.

wishing you all a happy christmas and new year with love georgia, anna, esther, hannah and makenzie xxxxx


Merry Christmas
cheers for the good times

NOPE
STORE

Wishing all a fun & safe festive season & Thank You for your ongoing support!



into the woods...
...just around the corner in
Anslow Street, Woodend | 0413 326 100
Look for the red bike
Open everyday from 11am until 5pm
[later Thurs & Fri]



BLACKFOREST
TYRE & AUTO

Thank you for your support
from Phill, Brad, Mark, Diago, Angus,
Will and Tess

66 Urquhart Street Woodend | 5427 2693



Wishing you all a very merry Christmas and a safe and happy a new year

Storage
WOODEND



WOODEND PRODUCE STORE
31 Brooke Street
Open 7 days

WISHING YOU ALL A SAFE HOLIDAY SEASON AND A HAPPY NEW YEAR

Thanks for all your support, your humour and your ongoing business. Christmas cheers from team Mick, Fee, and Sandy.




Christmas \$10 VOUCHER

 TerryWhite Chemmart WOODEND

Only valid at TerryWhite Woodend. Valid on Transactions over \$30. One voucher per person. Not valid on prescriptions or scheduled medicines. Not redeemable for cash. Valid to 31st December 2024

**Ho Ho Ho...
Mow Mow Mow...**

Cheers from

TERRY'S GROUND SCREW