



The New Woodend Star



Imagine a lake,
river or rippling
rocky mountain
stream...
story page 45

Photo: Ecstatic Calder Fly Fishing
Association member Mitch Siddle, with a
personal best brown trout.

First published 1997 – by the community, for the community

PUBLISHER

The Rotary Club of Woodend
 ABN 32 685 225 No. A0021518E
 PO Box 333 Woodend 3442
 Published monthly (except January).
 Distributing 4,100 free copies across
 Woodend 3442 postal district.

MANAGEMENT COMMITTEE

Deidre Willmott (Chair)
 Josephine Falzarano (Editor)
 Mick Deviny Jane Watters
 Terry Longton Kellie Flanagan
 Dr Elaine Saunders Kelly Griffiths

CONTRIBUTE ARTICLES

First read our editorial policy on www.newwoodendstar.com. Please submit your story [with pictures, if you have them] by email to content@newwoodendstar.org.au. The cut-off date for copy is the 15th of each month, preceding publication.

DISCLAIMER

Articles and comments published in this newspaper are the result of contributions and relevant news articles pertinent to the Woodend district. No person from the Rotary Club of Woodend Inc., The New Woodend Star or the editorial team is liable for any mistakes, omissions, or misprints. They make no representation of any description as to the truth or accuracy of any statement contained herein and accept no liability for any loss suffered by any person who relies on any statement contained herein. The committee reserves the right to omit, reject, cut, alter or otherwise re-work submitted articles and photos to make them suitable. Persons or organisations submitting material for publication in *The New Woodend Star* do so on the condition that *The New Woodend Star* has the right to reproduce this material in any format. The opinions expressed are not necessarily those of the editorial team, or The Rotary Club of Woodend. Submission does not guarantee publication.

BOOK YOUR ADVERTISING

www.newwoodendstar.com

Size	Height x Width	Cost
Trade services	40 x 60 mm	\$50
Eighth page	55 x 90 mm	\$71
Quarter page V	134 x 90 mm	\$142
Quarter page H	55 x 190 mm	\$142
Half page V	277 x 90 mm	\$263
Half page H	134 x 190 mm	\$263
Full page	277 x 190 mm	\$435
Insert your brochure		\$462

READ CURRENT + BACK ISSUES

www.newwoodendstar.com/view

CONTACT US

content@newwoodendstar.org.au
 0458 525 671, 10-3 Mon-Thurs
accounts@newwoodendstar.org.au
 Questions? Email preferred

This paper is a member of CNAV



Supported by Macedon Ranges Shire Council

insert brain here



by woodsy

Paul Woods (Woodsy) was originally from Port Macquarie, NSW and spent years working in television in both the UK and Europe. He and his wife lived in Woodend from 2010 - 2013 before moving closer to Melbourne for work. They now have three children and a Staffy named Winston.

Paul today continues to do cartoons in his spare time as a way to switch off and see the world through a different lens. Insert Brain Here, is a single panel cartoon that places fish,

birds, dogs, chickens, zombies, snowmen and other mythical creatures in bizarre, everyday situations. The aim is to make Insert Brain Here short, funny and capable of giving the reader a quick chuckle.

You will see work from Woodsy in each issue of The New Woodend Star.



I know it felt damp, but believe it or not, it was the driest July for over 20 years. We had some form of precipitation on 26 of the 31 days of July, but only managed 52.4 mm for the month, compared to the average of about 92 mm. Year to date rainfall is 482.2 mm, which is still slightly wetter than average. *Peter Yates*

Woodend's Rain report

Month	2018	2019	2020	2021	2022	av 5yr
January	80.0	9.8	73.6	92.6	140.8	79.4
February	3.8	12.0	67.8	32.4	2.0	23.6
March	31.7	12.2	79.6	47.0	73.2	48.7
April	31.0	7.6	139.8	15.2	89.6	56.6
May	115.6	114.8	79.0	83.0	39.4	86.4
June	78.2	168.2	80.1	183.6	84.8	118.9
July	73.3	63.2	49.3	115.6	52.4	60.2
August	91.3	78.1	93.0	56.0		
September	26.2	38.3	56.3	72.8		
October	69.0	29.4	99.5	102.0		
November	55.5	64.8	54.4	91.2		
December	91.0	10.0	42.4	45.0		
Total mm	746.6	608.4	914.8	936.6	482.2	

WE ARE HIRING

POSITIONS:
Practice Nurse
 (Location Kew)

Personal Care Workers
 (Location Macedon Ranges)

APPLY NOW

For more information please contact us on (03) 5427 2002 or alternatively, email your cover letter and resume to: enquiries@newagedcare.com.au

The New Woodend Star and the Rotary Club of Woodend acknowledge the Dja Dja Wurrung, Taungurung and Wurundjeri Woi Wurrung Peoples and their Ancestors as the Traditional Owners and Custodians of the lands of the Macedon Ranges on which we meet, work and live. We recognise their living culture and continuous connection to the land and waters in our area and pay our respects to their Elders past, present and emerging.

Vale Ivor Johnson

The Rotary Club of Woodend mourns the loss of past Rotarian and friend Ivor Johnson; he was an Active member from 1987 to 2006 and an Honorary member thereafter.

Ivor was a charter member of the club, and President in 1989 to 1990. He continued to hold various Board positions, and the most effective was his term as Community Services Director, where he demonstrated an enthusiastic drive for fundraising and managing projects.

The most significant and enduring project Ivor had a big hand in was the establishment of The New Woodend Star. In late 1996, the Rotary Club of Woodend (RCW) was approached to see if anything could be done to resurrect the newsletter. Ivor Johnson, the Rotary Club's Community Services Director at the time, formed a steering committee to determine if the Club could publish a newspaper.

The Steering Committee agreed that it was feasible for the Rotary Club to

produce a monthly publication. It was envisaged that the advertising income would cover the production costs. The RCW Board agreed that The New Woodend Star would become a community project and with Ivor's commitment, support and endurance, The New Woodend Star was published.

Rotarians past and present are grateful to have the publication as a major fundraiser to fund local community projects.


Ivor Johnson was also instrumental in establishing the Probus Club, a local association of retired or semi-retired business people, and on 4th February 1993, the Woodend Probus Club was chartered. The club is still active today.

His contributions still continued, and in April 2021 Ivor Johnson was awarded the Gold Companion award in recognition of the tangible and significant support given for the development of research through Australia Rotary Health.

Thank you Ivor



Photo: Dr Suresh Marcandan Chair Rotary Health for District 9800 presenting the Gold Companion award to Ivor Johnson April 1921



Mortgage Choice



Refinance

Talk to our team today

Mortgage Choice – Woodend

p 5427 4262
w MortgageChoice.com.au/peter.f.machell

Mortgage Choice Pty Ltd Australian Credit Licence 382869

BUSINESS FOR SALE



RayWhite






WOODEND WINE STORE & BAR


Excellent reputation for quality wine, boutique spirits and craft beer. This high end alcohol retail business includes a bar licence, outdoor seating, kitchenette with glass washer, online store and a regular clientele. Situated in the heart of the food and wine scene of Woodend the potential growth for this business is there for the taking.

- General Liquor Licence
- Food Licence - Class 2 cafe / restaurant
- Long term lease

So if you are looking to complete the tree change with the ultimate work life balance it's time to start the adventure now.

Enquire with agent
 Helen Jens
 +61 404 834 926
Helen.jens@raywhite.com



 Endangered

say

HAPPY FATHER'S DAY

this year with
**Australian Made and Owned
gifts from Endangered!**

HumphreyLaw[®]
the sock specialist



Everything Made in Australia!
Gift wrapping available.



97 High Street, Woodend
endangereausmade.com.au
5427 1198

Loan
Market

Look up. Look ahead.

20 MINUTE
HOME LOAN
DISCOVERY
SESSION

Book now

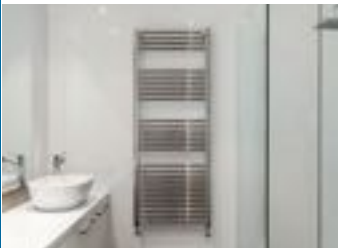


Matthew Farrell
Finance Broker



Loan Market Pty Ltd | Australian Credit License 390222

woodend hydronic heating & cooling



Refrigerated Cooling

- Wall hung split systems
- Cassette units
- Ducted units
- Bulkhead hideaway units

Hydronic Heating

- Radiator panels
- Heated towel rails
- Slab heating
- Trench element
- Wood fired boilers



*Specialising in new builds
& existing homes*

*Stylish, clean, silent energy
efficient heating*

**Locally based & servicing the
surrounding areas**



For more information contact:

Chris Short

m: 0400 774 302 email: info@woodendhydronicheating.com.au

Community Bank
Trentham & Districts

Your mobile
lending specialist

Call Corina on 5424 1608

 **Bendigo Bank**

Is your Bank giving you the cold shoulder?

Our mobile bankers will give you a warm
reception!

At Community Bank Trentham & Districts, the emphasis is on **Community!** We have many happy customers in Woodend & surrounding areas and we sponsor both the Football/Netball and Golf Clubs. We also invested in this year's Woodend Winter Arts Festival, so we've proven our support of local organisations and events.

We can support you, too! Whatever your banking needs, we're here for you. Call 5424 1608 to make a time for a review of your situation. We'll come to you and promise we won't leave town!

Woodend Commonwealth Bank Closure

Rob Mitchell MP, Federal Member for McEwen, expressed his extreme disappointment to be informed that the Commonwealth Bank has announced the closure of its branch in Woodend, effective September 2, 2022.

Mr Mitchell believes this is yet another example of the big banks putting profits before people.

Commonwealth Bank Australia recorded an \$8.6 billion profit for 2021, with the 2022 financial year figure due to be announced on 10 August 2022.

"It does not only mean jobs lost in town, with no surety of re-deployment, it also

means further strain to the AusPost outlet and staff, which will now be the only place in Woodend for bill payments," Mr Mitchell said.

"It's very disappointing and wrong that there has been no avenue for input from the community.

"Local customers will now have to commute to either Kyneton or Gisborne, up to 20 kilometres away, which shows the bank is not taking the needs of our residents into consideration. We know that for many travelling that far to bank is just not an option.

"Not everyone is able to use electronic

banking and therefore rely on the services provided by a branch for their everyday needs, particularly the elderly.

"I call on the Commonwealth Bank to pause this plan until it has appropriately consulted the community, explained how it will not only redeploy its staff, and also continue to provide this essential service to our community."

Mr Mitchell says he will continue to work with the Woodend community to advocate for community-based solutions to this decision.

SUBMITTED BY ROB MITCHELL MP, FEDERAL MEMBER FOR MCEWEN

The Region Manager David Castle submitted the following response for The New Woodend Star readers.

"We regularly review our branch locations across Australia to help us make informed decisions on where to open new branches, where to renovate or upgrade existing branches, and in some instances where to close branches.

"Following a recent review, we made the difficult decision to permanently close our Woodend branch. This branch has had transactions down by half over the five years before the coronavirus pandemic.

"We've redeployed the vast majority of staff from branches that have closed. We are engaging our people from Woodend branch to support securing appropriate comparable roles suitable to their needs.

"We recognise some senior customers prefer to do their banking face-to-face, and this is one of the reasons why CBA is proud to maintain the largest branch network in the country. Each year, we invest around \$50 million in our branch network, to upgrade and refurbish existing branches and open new branches where we see customer demand.

"We've ensured customers who prefer over-the-counter service still have access to this option. For Woodend customers, we have other branches in the region at Kyneton and Gisborne. We've found a quarter of customers from Woodend are already visiting these other branches.

"We understand this change may affect the way some of our customers bank, and the team at Woodend branch are available until Friday, 2 September 2022 to help customers find the solutions that best suit their needs.

"For customers who prefer face-to-face options, Australia Post's Bank@Post service is also available down the road at Woodend LPO, and at the nearby Macedon, Mount Macedon, Riddells Creek, Romsey and Tylden LPOs, for personal and business banking transactions. Last year we renewed this service until 2032, so customers can continue to make withdrawals and deposits including passbooks during normal business hours.

"Customers can also access their accounts 24 hours a day through NetBank or the CommBank App. We are also available for general banking enquiries, through our locally-based contact centres on 13 22 21, every day between 8am and 8pm."

SUBMITTED BY MADELINE DUNCAN, COMMUNICATIONS ADVISOR

Expert advice in a supportive environment

JSLAW
Barristers & Solicitors

A: Woodend - 2/34 Urquhart Street
A: Bendigo - 72 Queen Street
T: 03 5444 1181
E: admin@jslaw.com.au
W: www.jslaw.com.au



Specialising in family law, criminal law
and intervention orders

Liability limited by a scheme approved under Professional Standards Legislation

NEW AGENCY BOUND FOR SUCCESS

A new real estate agency has entered the Macedon Ranges, with local agents Lynne Payne and Rhys Nuttall firmly set on success.

Having worked in real estate for more than 22 years, Rhys knew he could bring the drive, passion and expertise to his own brand; serving vendors and buyers with transparency and integrity.

"Bound Real Estate is not about one transaction, it's a life journey for us to help you. Our aim is to develop relationships with our clients over many years and many transactions, confidently understanding their requirements and wishes as they move through various phases of life," Rhys said.

Rhys has a desire to provide a better experience for his clients, bringing real estate into a new digital era.

"We're using the latest technology to provide our clients with up-to-date and insightful property and market appraisals.

"The concept is simple; each agent in our team represents a suburb or council region. They're experts in that area, they're well connected and they're local. They know exactly how they can assist both vendors and buyers.

"We already have agents representing Daylesford, Castlemaine and the Macedon Ranges as well as multiple Melbourne suburbs, but we plan to expand further," Rhys said.

Lynne brings a wealth of experience and knowledge, having lived in Woodend since 2016. Active in local community groups and passionate about everything the Macedon Ranges has to offer, Lynne's family are on the journey to establishing a paddock to plate truffle farm.

Lynne has always been a people person, successfully running her own recruitment company, and she now

looks forward to furthering her career as a licensed estate agent.

The pair is not deterred by a falling property market, saying there will always be buyers, and there will always be sellers.

"I would argue there is plenty of growth still to be seen in the Macedon Ranges, and the reality is, it's all relative; especially when you're buying and selling in the same market.

"We want our clients to feel confident that they will still get a good return on their property and be able to buy in the same market, and we can provide a thorough appraisal or even off-market guide to selling," Rhys said.

If you're interested in even a casual chat to discuss your options or your property, give the team at Bound Macedon Ranges a call.

They can be contacted on Lynne 0479 068 228 or Rhys 0438 383 221.

SUBMITTED BY RHYS NUTTALL

The family business

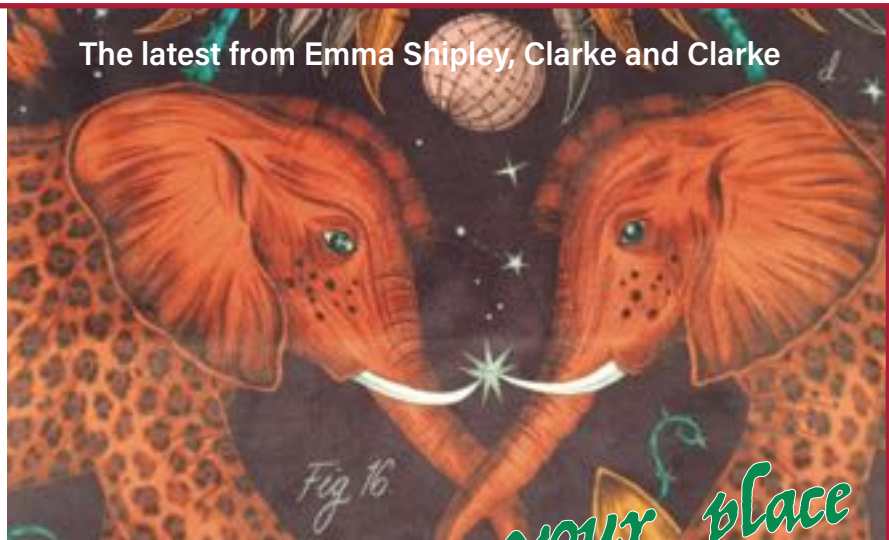
There was never an official time when Michael Bradley 'entered' the family business. Like his dad before him, Michael grew up in it, making curtain tracks since his was about ten years old. It was good for a bit of pocket money.

Michael recalls that Friday nights in the early 1980s were regular family outings to Footscray. Jim had made all the curtain tracks to fill customer orders for Forges and they'd load up the old station wagon with tracks on the roof then drive through all the (not-yet-bypassed) towns, like Gisborne and Diggers' Rest and Keilor, to deliver tracks.

'Dad pulled up at the back door of Forges and someone would pop out the back and hand him an envelope full of cash,' Michael remembers. 'Then we'd unload all the tracks. That's the way it was done. Seems strange now to think of receiving cash from a major department store!'

On any given day, whenever they went to pick up mates in the station wagon, there were always fabric samples in the car that had to be shifted to fit the people in.

The latest from Emma Shipley, Clarke and Clarke



All the family's holidays were based around fitting a job. During Expo88, courtesy of clients Barry and Karen Plant, the Bradleys stayed in the posh, new gated community of Sanctuary Cove with golfer Ian Baker-Finch as their next-door neighbour. Michael says, 'We rocked up in the old VL Commodore with a trailer full of curtains... We didn't quite fit in. But it was fun!'

Bradley's
Curtains+Blinds

72 High Street, Woodend 3442

t 03 5427 2361

e sales@bradleyscurtains.com

w bradleyscurtains.com

B



Rhys Nuttall 0438 383 221



Lynne Payne 0479 068 228



Providing a personalised and professional service for your property sale. You are bound to love what we do.



MACEDON RANGES SUSTAINABILITY GROUP
INVITES YOU TO

**WOODEND
COMMUNITY
FARMERS
MARKET**

FIRST SATURDAY OF EVERY MONTH
9 AM TO 1 PM

Buy fresh local
produce straight
from over 70 farmers
and producers



CNR FOREST & HIGH ST
WOODEND



[MRSQ.ORG.AU/FARMERS-MARKETS](https://mrsq.org.au/farmers-markets)



MACEDON RANGES SHIRE ENVIRONMENTAL UPDATE

Submitted by Catherine Chapman, Communications Unit MRSC

Detox Your Home in the Macedon Ranges

Residents can dispose of household chemicals for free at Sustainability Victoria's Detox Your Home event on 17 September at the Kyneton Saleyards from 9am to 12pm.

Co-hosted with Macedon Ranges Shire Council, Detox Your Home is a free and convenient service for householders to safely dispose of household chemicals such as weedkiller, cleaning chemicals, old cooking oil and cosmetics.

Registrations are essential. Visit sustainability.vic.gov.au



Learn sustainable land management practices with Healthy Landscapes

The Healthy Landscapes: Practical Regenerative Agricultural Communities program aims to raise awareness in the community about sustainable land management practices that improve soil health, reduce exposure to climate risk, enhance biodiversity and increase on-farm productivity.

The following workshops are available to learn about sustainable land management practices under the program:

Holistic Grazing Course

Commences Friday 9 September, Malmsbury

The Holistic Grazing Management Short Course has been designed to assist land managers to improve their skills and knowledge about grazing livestock, resulting in an increase in soil carbon and perennial pasture species, including native species.

Along with the presenters Jason McAinch and Sam White, guest speakers will be used to enhance the delivery of the program.

The course will incorporate:

- 16 sessions delivered between September 2022 and May 2023
- Face-to-face theory learning (six days)
- Online theory learning and support sessions
- Practical on-property learning

The course is structured for large and small landholders with grazing livestock. Landholders in the Macedon Ranges Shire, Hepburn Shire or the City of Greater Bendigo are eligible to attend.

Equiculture course discount now available

Equiculture, short for equine permaculture, is a holistic horse property management program that promotes sustainable farm and pasture management techniques designed with your horse's welfare and natural behaviour in mind.

The program is delivered digitally, with participants able to learn at their own pace. Fifteen modules teach

participants all about healthy soil and pasture, managing weeds, mud and erosion, property design and layouts as well as managing optimal equine health.

A \$100 discount for this online course is available to residents of both the Macedon Ranges and City of Greater Bendigo shires.

For information about Healthy Landscapes courses, visit mrsq.vic.gov.au/HL-courses or contact 5422 0333.

Spring Environment Event Program released

Would you like to learn more about the plants, animals, insects and habitats of the Macedon Ranges?

Council's Spring Environment Events Program provides many opportunities to connect with the outdoors and enjoy the stunning nature of the Macedon Ranges.

Across our bushland reserves and roadsides, you can explore local biodiversity, contribute to local citizen science projects, and build on your skills in flora and fauna identification. Our rural landholders will benefit from a workshop on the identification and management of invasive grass species, such as needle grasses and serrated tussock, at our Nassella workshop.

Want to become a citizen scientist? There are opportunities to take part in flora and fauna monitoring projects, including our annual koala count at Hanging Rock, Bird Blitz, hollow monitoring and more.

To download a program visit mrsq.vic.gov.au/environment-events

Are unplanned power outages disrupting your life and business?

A study recently undertaken by the Macedon Ranges Sustainability Group (MRSG) has identified that the North Woodend, Newham and Lancefield areas are the most impacted by unplanned power outages in the Macedon Ranges region.

The MRSG feasibility study, funded by the Victorian State Government's Neighbourhood Battery Initiative has determined a business use case that supports the installation of a neighbourhood battery in or near Lancefield. ENEA Consulting were engaged to prepare a 44-page report that took an in-depth look at the potential sustainability, community, network and economic benefits of a neighbourhood battery.

ENEA found that one electricity feeder in the Macedon Ranges stood out as suffering from more unplanned electricity outages, lasting longer than average. These outages on the WND013 feeder, situated between Woodend and Lancefield, have significantly higher outages in terms of total minutes, which have had a major impact on homes and businesses in the region.

Affecting approximately 2600 homes and businesses in the Newham, Cobaw and Lancefield district, it was identified that just under half of the unplanned outages lasted 4 hours or more.

"We found that residents in this area are most concerned with the reliability of their power supply and wanted renewable energy sources to be made more equitable within the community so that even those without solar can benefit from renewable energy," said MRSG President, David Gormley-O'Brien. "This project shows that there is a clear case for using neighbourhood batteries on feeder lines experiencing a high number of power outages of short duration," he said.

How will a Neighbourhood Battery Help?

By working with Powercor to install a neighbourhood battery along this key electricity feeder, it is expected that the disruption to customers upstream of the battery can be reduced significantly. The battery itself will be capable of storing enough energy to ensure that most Lancefield customers will be able to maintain basic electricity usage for short periods of time, often within the time that it will take the authorities to restore services.

What Can I Do?

MRSG is partnering with Powercor to gain community

LANCEFIELD NEIGHBOURHOOD BATTERY INITIATIVE



Let's help to keep our community connected to a more reliable grid ⚡

The Macedon Ranges Sustainability Group is seeking community support to have a government-funded, Neighbourhood Battery installed to ensure a more reliable power supply and assist in lessening the impact of unplanned power outages for the residents of Lancefield.

The MRSG are committed to a transparent engagement process and look forward to answering your questions and hearing your concerns.

 **POWERED BY RENEWABLE ENERGY SOURCES**

 **SERVICING UP TO 2500 CUSTOMERS AT NO EXTRA COST**

 **KEEPING LANCEFIELD CONNECTED**

TO LEARN MORE AND REGISTER YOUR INTEREST GO TO:

mrsg.org.au/nbi

support for the installation of the 500kw battery along the WND013 feeder line to increase reliability of electricity supply to Lancefield customers. The battery is expected to cost around \$500,000 and would be funded by the Victorian state government in partnership with Powercor.

Who is the Macedon Ranges Sustainability Group?

The Macedon Ranges Sustainability Group is a not-for-profit, member-based organisation focussing on

projects, events, and practical activities that promote sustainable living in our local communities. We are home to a number of community action groups made up of dedicated individuals working together to make the Macedon Ranges a more sustainable place to live.

To register your support and your interest in updates on the project, go to mrsg.org.au/nbi

SUBMITTED BY NIKKI BARKER ON BEHALF OF MRSG



BINGARRA

LET'S GROW YOUR FUTURE

Bingarra is an alliance of experienced business strategy specialists, led by Dr Elaine Saunders, who provide cost-effective tailored support to organisations that are launching new ventures, divesting, or accelerating their scale-up journeys.

From talent acquisition and coaching, to growth strategies, prototyping, brand-building and investor relations, we'll ensure that all your bases are covered by a team working seamlessly and in close partnership with you.

elainesaunders@bingarra.com

www.bingarra.com



Get to know the region's important pollinators

Spring has sprung and our gardens are abuzz with butterflies, flies, bugs and beetles. Now we have a publication to help you identify these beneficial insects: Your guide to the Insects of Central Victoria.

This handy booklet is in the same format as Council's flora, weeds and bird guides, and features over 220 local insect species in full colour. The guide features insects that are likely to be observed in your garden and nearby bushland—with a surprising number of native bee species, moths and native flies.

The Upper Campaspe Landcare Network led the project to develop the guide, with partners Wombat Forestcare and local councils, including Macedon Ranges Shire Council.

The guide is available at Council service centres or online at mrsc.vic.gov.au/insects

Council now selling compost

Council is now offering delivery of Australian standard FOGO compost within the shire.

Delivery sizes and costs are:

- 3 cubic metres: \$146.30 GST included
- 6 cubic metres: \$182.60 GST included

To book compost delivery, contact Customer Service on 5422 0333, or visit your nearest Customer Service offices. For office locations and opening hours visit mrsc.vic.gov.au/contact



Cool Changes is coming to Kyneton and Macedon/Mount Macedon

Over the coming months, Council's Cool Changes program will be working with the Kyneton and Macedon/Mount Macedon communities to develop a Community Climate Action Plan.

This place-based, community-led program works with local communities across the shire to facilitate the development of local climate action plans. It is an opportunity to strengthen current projects, programs and connections already forged over many years whilst creating a new, shared vision for climate action into the future.

The program has already been successfully run in Malmsbury, Woodend, Romsey, Lancefield, Gisborne and Riddells Creeks and has addressed key local issues such as community-owned renewable energy, biodiversity protection and enhancement, sustainable and active transport, community education, waste reduction and many more.

The program kicks off with an online survey asking you to share your priorities for local climate action, which closes 9 September. To complete the survey, visit mrsc.vic.gov.au/Cool-Changes.

For further information or to register for the workshops contact Justin Walsh at juwalsh@mrsc.vic.gov.au.

SUBMITTED BY CATHERINE CHAPMAN, MRSC



Experience . Understanding . Commitment

Monday to Friday 8.30am – 5.00pm
74 High Street, Woodend, 5427 2477

chinkasteel.com.au

- FAMILY LAW CHILDREN
- FAMILY LAW PROPERTY
- BUSINESS SALE & PURCHASE
- INTERVENTION ORDERS
- ESTATES & PROBATE
- WILLS & POWERS OF ATTORNEY
- CONVEYANCING – FIXED PRICE



**Auction
Saturday
10 September
at 11am**

Newham

6 Wisemans Lane (Corner of Three Chain Road)

Executors Realisation Sale

On 2Ha (4.9 Acres)

An unpretentious first home buyer, renovation or investors opportunity in prime central Macedon Ranges tree-changer location.

This very basic solid besser brick residence of approximately 110 m² has great upside potential.

Accommodation comprises living room, kitchen (needs fitting out) two bedrooms and bathroom/laundry and with some tender loving care (TLC) could be made into a very comfortable home. Features include suspended slab construction, in-floor hydronic heating, beautiful panoramic north facing views to the Cobaw Ranges, two paddocks, detached steel garage with concrete floor and small storage shed.

Please note no offers will be considered prior to the auction.

Reserve Price \$687,500

John Keating 0419 880 444 or **Peter Wood** 0408 866 774

Terms 10% deposit, balance 30/60/90 days



Rotary
Australia &
New Zealand



*The Rotary Club of Woodend
requests the pleasure of your
company at the official opening of the
'Rotary Rocks', a project of the
Rotary Club of Woodend to mark the
centenary of Rotary Clubs in
Australia and New Zealand.*

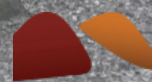
**Saturday October 1st 10.30 am
Welcome to Country and Smoking
Ceremony by the Dja Dja Wurrung
Traditional Owners.**

**Location: File Mile Creek,
Woodend - Just behind
the Tourist
Information
Centre**

Rotary
Club of Woodend



Woodend
Landcare



Macedon
Ranges

Join us to celebrate Rotary's 100 years of service in Australia

The Rotary Club of Woodend invites all members of the community to come and celebrate the official opening of 'Rotary Rocks' on the Five Mile Creek, 10.30am on Saturday 1 October 2022.

The Year 2021 marked the centenary of the first Rotary Club chartered in Australia after Rotary was founded in Chicago in 1905. When the Rotary International encouraged clubs throughout the country to mark this important occasion, Woodend Rotarians chose to do so by creating a place for contemplation and quiet reflection at the Five Mile Creek, an iconic location right in the centre of town.

We hope that those of you who walk along the creek have enjoyed watching the project unfold, from the removal of the old willow to the clearing of weeds that had overtaken the site, to the installation of the rocks, pebbles and mulch and finally the planting of native trees and plants.

The creation of this beautiful community space was made possible with the profits generated by The New Woodend Star, and through the work of our volunteers, with the support of the Rotary Foundation, the Macedon Ranges Shire Council, Woodend Landcare and many others in our community.

SUBMITTED BY ROTARY WOODEND CENTENARY PROJECT COMMITTEE

Woodend Rotary is hosting its 11th annual **Community Halloween Party** at the Woodend Children's Park on Monday 31st October at 5.00pm. This is a free event and a way for Rotary to say thank you to the community for supporting our fundraising events during the year. This event is made possible with the support of Macedon Ranges Shire Council and the generosity of our local sponsors. There will be entertainment, a sausage sizzle, fairy floss and more. Dress up in the Halloween theme, pack a picnic basket and a blanket and come and join in the fun.

So we can support best practice waste management and environmental sustainability, please avoid single use plastic, and bring your own water bottles and use items that are compostable.

This is a FREE event and bookings are required via Trybooking <https://www.trybooking.com/CCBVO> to help our planning.

More information in the October edition of TNWS.

The Rotary Club of Woodend welcomes new members.



Lulu Cockram

Rotary Club of Woodend welcomes Lulu Cockram as a member. Lulu is well known in the Woodend community; many have experienced her willingness to assist with local projects and causes.

At her induction, Lulu thanked Rotary members for welcoming her and for the events and activities organised over the years to strengthen community connection. Lulu's time working at the library gave her opportunities to work with Rotary on events such as the Anzac Centenary and Halloween Community Party and to join in with The New Woodend Star folding team, the Walking Group and Friends group. Lulu is accustomed to spending time with a Rotarian; her late father was a member of Templestowe Rotary Club for many years.



Sally and Peter Dell

Peter and Sally Dell moved to Woodend in February to retire, after residing in Warragul. They have been members of the Rotary clubs of Warragul and Traralgon over a 22-year period.

Peter is currently the Australian President of Dream Cricket - a Rotary-coordinated program that aims to provide school students who have special needs the opportunity to enjoy activities based on cricket, and children with intellectual, physical or sight impairments can be involved.

Sally is district champion for End Trachoma, a program to prevent trachoma, an infectious, preventable eye disease that is prevalent in indigenous communities.

Sally and Peter have also been involved in the Rotary Youth Exchange program and the National Youth Science Forum and have held the positions of President and Assistant Governors in District 9820.

Another wonderful set of skills and experience to add to our club membership.



Organic Wholefoods

NOW OPEN IN WOODEND



Fresh fruit & vegetables

Full Certified Organic and GM free range



Scoop your own

Bulk nuts, seeds, dried fruit, pulses, legumes and grains



Pour your own

Full cleaning and personal care products range



Circular waste

Glass bottle milk



Grind your own

Freshly ground peanut butter and flowing local honey



Treat yourself

Bulk chocolates, raw vegan and gluten free cakes

We would like to welcome our new GPs, **Dr Seemin Ahmed**, and **Dr Janet Momanyi** to the team.



Dr Seemin Ahmed
General Practitioner
MBBS

Languages spoken – Bengali, English

Areas of interest:

- Women's Health
- Children's Health
- Mental Health
- Geriatrics
- Chronic Disease Management



Dr Janet Momanyi
General Practitioner
MBChB

Languages spoken – English and Swahili

Areas of interest:

- Emergency Medicine
- Women's Health
- Children's Health
- Preventative Medicine
- Wound care and minor surgical procedures

For our latest updates, please visit our website at www.bsmc.net.au or follow us on Facebook by searching *Brooke Street Medical Centre*.

Opening Hours

Monday	8:30 AM - 7:00 PM
Tuesday	8:30 AM - 7:00 PM
Wednesday	8:30 AM - 7:00 PM
Thursday	8:30 AM - 7:00 PM
Friday	8:30 AM - 5:00 PM
Saturday	9:00 AM - 1:00 PM
Sunday	Closed
Public Holidays	Closed



Download the **Better Medical app** by scanning the QR code.

14 Brooke Street, Woodend
Tel: 03 5427 1002 www.bsmc.net.au

TIME TO LEND A HAND

The Relay For Life committee are looking for new members to help organise and run our 2023 event and onwards!

For 20 years, the Lancefield Macedon Ranges Relay For Life has been a highly successful community-based event, run to raise much needed funds in order to support the very important work done by Cancer Council Victoria.

In 2022 the event raised over \$73,000, and since its inception, the event has raised close to \$1.5 million.

It is a one-day event, traditionally held at Lancefield Park on the first Saturday of March.

While the event has a good number of supporters who help to set up and run the event on the day, the committee is calling for additional resources; they would like to find someone to immediately take on the role of social media and public relations co-ordinator, and is also seeking others to join committee as general members.

They would love to hear from anyone located across the Macedon Ranges, whose knowledge will assist to grow the event and widen participation in it across the region.

The aim over the next year is to renew and reinvigorate the committee, as well as to position the event for further success into the future.



If you would like to help organise a Lancefield Macedon Ranges Relay For Life event, you can apply here:

<https://www.volunteer.com.au/volunteering/184518/committee-members-relay-for-life-lancefield>

For more information about the Relay For Life organisation, please contact cancercouncil.relayforlife@cancervic.org.au, or visit the website www.relayforlife.org.au.

SUBMITTED BY KATHY LAKEY





Grand Opening!

SATURDAY 10TH SEPTEMBER 2022

ACTIVITIES FROM 9AM - 12PM
SUSHI | BUTCHER | FRESH FOOD HUB
LOCAL | LIQUOR | BAKERY



WHERE THE *locals* MATTER



128 HIGH ST WOODEND VIC 3442 PH: 03 8554 0530

Free workshops for small business



Council is offering two free in-person business workshops facilitated by Small Business Victoria in Gisborne during September and October.

- Micro Business Health Check, Wednesday 14 September, 9.30–11.30am
- This workshop will provide tools to help you understand how regular self-assessment of your micro business will set you up to identify key issues before they arise.
- Strengthening Business Practices, Wednesday 5 October, 9.30am–12.30pm

This workshop aims to help small business owners looking for short term, constructive advice to support business recovery as well as tools for longer-term future crisis planning.

Workshops will be held at Gisborne Administration and Service Centre, 40 Robertson Street, Gisborne.

Bookings are essential. For information call 5421 9654 or visit mrcs.vic.gov.au/business-events



Woodend General



Curated Goods for the Home, Garden & Family.

NEW STORE NOW OPEN

We have moved! Come & discover our brand new store.

84-88 HIGH STREET WOODEND
Next door to Fox in The Chamber & CBA

OPEN 7 DAYS

Monday-Saturday 9.30-5pm Sunday 10-4pm
Shop online for click & collect - woodendgeneral.com.au

BEAT THE COLD
INSTALL GENUINE
DOUBLE GLAZING
INTO EXISTING TIMBER WINDOWS
REDUCE UP TO 70% HEAT LOSS
www.macedonrangesglass.com.au



GLASS REPLACEMENTS, SHOWER SCREENS, SPLASHBACKS, MIRRORS & PET DOORS

macedonrangesglass.com.au
estimating@macedonrangesglass.com.au

6/5 Ladd Rd New Gisborne Ph 5428 2899
89E Piper St Kyneton Ph 5422 1724

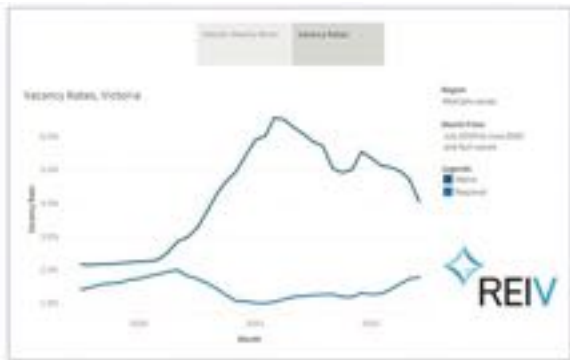


Update on Current Rental Market in Macedon Ranges

By Marissa Boyd, Rental Department Manager, Partner

What does it mean when agents talk about Vacancy Rates? Vacancy rates mean how much competition is in the current market for rental properties. Indicating the demand on an area for rental properties and whether you will have more success of finding a tenant for your investment. An extremely low vacancy rate (for example below 2%) means that there are more occupied rental properties and a higher rental demand. Whereas a high vacancy rate (above 4%) shows that more rental properties are vacant and available to rent. This shows at that specific time people are not interested to live in that area.

There are now signs of a peak in the rental market in regional Victoria with a larger number of regions now recording rising rental vacancy rates and some falls in rents. This time last year Macedon Ranges was in higher demand compared to today. However, I expect that this is due to the last of the lockdowns and isolations from COVID last year, and the demand of people wanting to move the Macedon Ranges, to escape Melbourne's lockdowns. Now we are finding that from Gisborne, through to Woodend and Kyneton- there are lower numbers of renters applying or enquiring on properties.



Ideally a good level for vacancy rates we expect around 3%, where you get a balance of people coming to the area and people moving out of an area- allowing for more availability of rental properties for those wanting to make the move.

The vacancy rate across metropolitan Melbourne went down to 4.0 per cent over the month while the vacancy rate in regional Victoria rose to 1.8 per cent in June 2022. Shown in the graph here from REIV results, you can see a major difference on the vacancy rates being lower in Rural Regional Victoria and higher in Melbourne over the last 2 years.

The average rent prices have also changed during this time, with peaking rental prices this time last year especially in Woodend and Gisborne. If you see the tables here, (sourced from REIV June Quart Results 2022) they are showing that now Kyneton has had a strong peak, with Woodend, Gisborne, Heathcote, and New Gisborne dropping slightly for house rentals. For units, it is Woodend coming in stronger in the last quarter of June 2022.

Suburb	June 2022 Quarter	March 2022 Quarter	Quarterly Change	Annual Change
KYNETON	\$550	\$520	5.8%	22.2%
CASTLEMAINE	\$425	\$420	1.2%	7.6%
HEATHCOTE	\$325	\$335	-3.0%	-14.5%
RIDDELLS CREEK	\$500	\$500	0.0%	0.0%
SUNBURY	\$390	\$390	0.0%	0.0%
WOODEND	\$560	\$570	-1.8%	-2.6%
GISBORNE	\$545	\$550	-0.9%	11.2%
NEW GISBORNE	\$510	\$525	-2.9%	-8.9%

Suburb	June 2022 Quarter	March 2022 Quarter	Quarterly Change	Annual Change
CASTLEMAINE	\$350	\$350	0.0%	6.1%
RIDDELLS CREEK	\$440	\$440	0.0%	0.0%
SUNBURY	\$360	\$360	0.0%	2.9%
WOODEND	\$460	\$455	1.1%	22.7%
GISBORNE	\$390	\$393	-0.6%	0.0%

Beliefs that these figures are from the cooler weather in the area, the economy and interest rates, and how expensive it is to by a lettuce these days. We do find that as the spring weather sneaks a peak – we should have an even higher demand and more movement of people from and to Macedon Ranges and therefore hopefully creating more of a balance in vacancy rates.

Spring is in the air!

After the chilly starts to the days, it's lovely to see the sun shining, the flowers beginning to bloom and the birds singing – Spring in the Macedon Ranges is glorious.

With this hint of spring, there has never been a better time to start preparing your property for sale. Make a time to talk to one of dedicated agents to discuss getting ready for the Spring market and what needs to be done to prepare your property now.

Our offices are located across the Macedon Ranges and our agents are specialists across the local area – call now for an obligation free appraisal.



New national Fire Danger Rating System from 1 September

Macedon Ranges Shire Council encourages residents to familiarise themselves with the new Fire Danger Rating system that came into effect Australia-wide on 1 September 2022.

The new system will be used across Australia, so whether you're at home or travelling, you will see the same system being used.

There are four levels of fire danger in the new system:

- Moderate – Plan and prepare
- High – Be ready to act
- Extreme – Take action now to protect your life and property
- Catastrophic – For your survival, leave bushfire risk areas

Fire Danger Ratings will be issued on days when there is a fire risk.

The new ratings are:



Each fire danger will have a clear set of messages including the actions the community can take to reduce their risk.

What are Fire Danger Ratings?

Fire Danger Ratings provide information so people in affected areas can

take action to protect themselves and others. The higher the fire danger, the more dangerous the conditions and the greater the impact will be if a fire starts.

What's changed?

The new Fire Danger Rating system has four levels (instead of six); Moderate, High, Extreme and Catastrophic.

There'll be actions for each level, so you'll know what to do to protect your life, family, pets and property. Vic Emergency and CFA warnings will include actions on what each rating should trigger you to do. Please update your property fire plans to reflect these new ratings.

You'll start seeing the new fire danger ratings online and in your local community from September 2022.

Fire Danger Rating roadside signs

Roadside signs will start to be replaced and updated from 1 September. The look and feel of the new signs will be the same in all states and territories across Australia. Prioritisation in Victoria will be given to those communities most at risk. For more information go to cfa.vic.gov.au or contact your local CFA brigade.

SUBMITTED BY COMMUNICATION UNIT, MRSC



More about the new fire danger rating system

The way we determine and communicate Fire Danger Ratings is changing.

The new national Fire Danger Rating system that has been developed uses the latest science to be more accurate and relevant to where you live.

Why has the system changed?

The science underpinning the existing fire danger ratings has largely remained unchanged for more than 50 years. During that time, our understanding of fire and fire behaviour has changed.

In recent years, scientists and researchers have mapped the vegetation across the entire country, so unlike the current system, which uses just bush and grass to determine the fire danger, the new system will use eight different types of vegetation, making it more accurate.

Using the latest science, fire agencies like the CFA will be able to better assess the conditions and the consequences of a fire, if one was to start.

The new national system also uses extensive community research to deliver a simplified approach to communicating bush fire danger ratings.

The four levels of fire danger in the new system are

Moderate - Plan and prepare.

High - Be ready to act.

Extreme - Take action now to protect your life and property. These are dangerous fire conditions. If a fire starts, take immediate action. If you and your property are not prepared to the highest level, go to a safer location well before the fire impacts. Reconsider travel through bush fire risk areas.

Catastrophic - For your survival, leave bushfire risk areas. These are the most dangerous conditions for a fire. Your life may depend on the decisions you make; stay safe by going to a safer location early in the morning or the night before. Homes cannot withstand fires in these conditions. You may not be able to leave, and help may not be available.

You will be able to check the daily fire danger for your area on the CFA website. You can also use the VicEmergency smartphone app to check the fire danger for your area.

For further information contact the Woodend CFA on 5427 2356 or visit the station in Urquhart Street or visit our website: www.woodendcfa.org

SUBMITTED BY MIKE DORNAU, CFA



OPEN TO THE PUBLIC

SUNDAYS ONLY
in July, August
and September
(10am to 4pm)

post
office
farm
NURSERY

THE
HELLEBORE
SPECIALISTS

www.postofficefarmnursery.com.au

934 ASHBOURNE RD, ASHBOURNE, VICTORIA 3442

EDIE for Family Carers



Woodend Lifestyle Carers Group is joining forces with Dementia Australia and Village Connect– Macedon Ranges Shire Council to bring a greater understanding and empathy regarding the impact of living with dementia at an event scheduled for Thursday, 22nd September 2022, as part of Dementia Action Week.

EDIE (Educational Dementia Immersive Experience) is a virtual reality technology which was developed in 2013 by Alzheimer’s Australia Victoria (now Dementia Australia) in conjunction with Deakin University with the aim of helping the carers of people living with dementia to experience the world through their eyes.

The Woodend RSL has kindly agreed to open its doors from 10.00 am – 12.30 am, and visitors will be able to talk to representatives from each of the participating organisations. Morning tea will be available, and the event is free to anyone who has a family member or friend living with dementia, who wishes to gain a greater understanding of what their loved one is experiencing.

Bookings are advisable, so if you are interested in participating call 1300 526 576,

Email: Vic.Booking@dementia.org.au or book on-line at: www.website.com.au/word/56745334_/thewebsite.com

Alternatively, please feel free to just drop in for a chat with our representatives.

SUBMITTED BY CHERRY SERVIS

Top Hat VIDEO & DVD PRODUCTIONS

- * 8 mm & 16 mm Film to DVD
- * VHS, Mini DV & Hi 8 to DVD
- * Filming & Editing Services
- * Corporate & Special Events Productions

AVPA Multi -Award Winners
Accredited Video Producers

www.tophatproductions.net.au
5422 3930 | 0409 22 3959

For All Your Dog Walking and Pet Sitting Needs

www.woofwalker.net.au

The Woodend Woof Walker

Call Chris 0431 533 509

MACEDON GARDENING

Garden design | Planting | Landscaping | Pruning
Hedging | Weeding | Mowing | Green removal

HIGH QUALITY, RELIABLE, AFFORDABLE
14 years experience in the Macedon Ranges. Highly trained staff, fully insured and available for regular care or one off jobs.

Ian and Melanie Matthews
0402 464 600
www.facebook.com/macedongardening

Ian Templeton Ph: 0419 556 140
Email: itempleton@bigpond.com

Servicing Business and Home IT needs
From PC's to Home & Business Networking
Hardware sourcing and support
Audio visual home set up
20+ years of experience in all facets of technology

Clarity Integrated Technology Services
...the quality of being clear, pure or transparent



BLANKETS FOR THE HOMELESS

On Sunday 31st July, a sewing session was held at Norma Richardson Hall to make blankets for the homeless. Over 400 woollen squares and strips were donated by Bill Brown from Trentham and were then sewn/crocheted together as blankets.

Completed blankets were delivered to Cobaw Health and other charity organisations for distribution to the homeless.

The session was a joint effort by the Rotary Club of Woodend and Reverend Melissa Clark from St Mary's Anglican Church, who coordinated volunteers, involving community groups such as Red Cross, CWA and Woodend Neighbourhood House.

Many thanks to all those who attended!

Another working bee is planned in approximately four weeks, and anyone wishing to help please phone Rev Melissa Clark on 0411 722 718 or Brendan Watters on 54 226 442.

SUBMITTED BY JANE WATTERS



Netball Registrations

Ladies' netball competition is played on Tuesday nights from 7.15pm at the Buffalo Sports Stadium.

The season has commenced, but we are still in need of more players.

For more information, including team game and player registration fees for the season, July-November, email buffalo@mrcs.vic.gov.au or call 54273 411.

Are you ready for the retirement lifestyle you want?

We can help you put financial strategies in place now, to **enjoy your retirement years.**

Retirement Planning Helps To:

- Safeguard your financial independence
- Get tax benefits & better returns on your savings
- Maintain a good standard of living
- Manage your cash flow
- Support your family & dependants
- Live the retirement you want with peace of mind

We are experts in financial planning - We have decades of experience and knowledge to help you retire with confidence.

We offer personalised service - We're not just about numbers, you will have hands on education, guidance and support every step of the way.

We are local - We service the Macedon Ranges & surrounds and understand the unique needs of our region.

Book your COMPLIMENTARY consultation to find out how we can help tailor a strategy unique to you!

Superannuation, Centrelink and Aged Care Advice.



nixon financial services pty ltd
AFSL 227748

Michelle Abela
 Accredited Aged Care Professional
 Financial Advisor

Ph: (03) 9744 2400
 Mob: 0472 688 589
 E: michelle@nixonfs.com.au

Michelle Abela and Nixon Financial Services
 Pty Ltd are authorised representatives of
 Sentry Advice Pty Ltd AFSL 227748

RU OK? Day

With R U OK? Day taking place on Thursday 8 September, locals are being encouraged to start a conversation that could change someone's life.

R U OK? Day is a nationwide campaign that was started in 2009 by Gavin Larkin, following the death of his father to suicide. With the aim of preventing other families from experiencing the pain that he suffered, he chose to encourage people to ask the question 'Are you okay?' It is recognised that human connection is a powerful protective factor in preventing suicide and poor mental health, and starting a conversation can potentially make a significant difference to someone who is not coping so well with life.

Sunbury and Cobaw Community Health, in partnership with Macedon Ranges Shire Council, invites community members, local businesses and community groups to get involved.

People are encouraged to sign up for a stencil kit, which includes information and handouts on how individuals, businesses or community groups can share the R U OK? message and get people talking about how to prevent suicide and poor mental health. To get your stencil pack go to www.surveymonkey.com/r/RUOKstencil.

www.surveymonkey.com/r/RUOKstencil.

Selected cafes across the Macedon Ranges will be offering free coffees on R U OK? Day and they will have handouts explaining how to have these important conversations, as well as information on local support services.

"Last year, we worked with 20 cafes to provide 400 free coffees," says Matt Gleeson, Community Partnership and Engagement Officer at Sunbury and Cobaw Community Health. "This meant that people had the opportunity to be exposed to the R U OK? message and discuss mental health. This year, we hope that the free webinar and the stencil campaign will take this important message even further across our communities and help to save lives."

If you have any queries about these events, contact Matt Gleeson at healthpromotionsunbury@scchc.org.au or call 9744 4455.

SUBMITTED BY SARAH TURNER



PROUDLY AUSTRALIAN MADE

WINDOWS & DOORS

SPECIALISING IN ALUMINIUM AND TIMBER DOUBLE GLAZED WINDOWS & DOORS

- CUSTOM BUILT FOR NEW HOMES, RENOVATIONS, OR TO REPLACE YOUR EXISTING WINDOWS
- HIGH PERFORMANCE & HIGH QUALITY
- BUILT TO LAST
- handypay**™ LOW RATE PAYMENT PLANS

EVOLVEWINDOWS

48 McDougall Road
SUNBURY evolvewindows.com.au
03 8746 9777

SPRING IS HERE!
AND THAT CAN ONLY MEAN IT IS CHICKEN TIME!



We love everything about chickens

So, if you need information about housing, bedding, feeding, accessories, pest control, treats and breeds - drop in and have a chat.

Deliveries available Monday to Friday




WOODEND PRODUCE STORE

31 Brooke Street
Open 7 days

Country Living Covered
5427 2753



Rotary Club of Yea

YEA GARDEN EXPO

17 & 18 SEP 2022
9AM - 3PM

Location: Yea Saleyards
Flat Lead Road, Yea (see website for directions)

Only an hour from Melbourne!

FOOD & DRINKS AVAILABLE!

- Native & flowering plants
- Garden sculptures
- Motorised barrows & vehicles
- Garden tools & Vegetable bins
- Seedlings
- Mulch, fertilisers & compost
- Ride-on & push mowers
- Nurseries
- Small chainsaws
- Roses
- Deciduous & Ornamental trees
- Garden books
- Plant Creche
- Speakers Program
- And much more.....

Entry \$10 for adults - Kids FREE!
Pay at the gate or book online via www.trybooking.com:
www.trybooking.com/BZOYD (Bookings open July 1st)

FREE PARKING

Contact: yeagardenexpo@optusnet.com.au
www.yeagardenexpo.com.au

Yea Garden Expo 2022

The Rotary Club of Yea will host its fifth annual Garden Expo from September 17 – 18, 9am – 3pm daily, at the Yea Saleyards, just a few kilometres south of Yea township on the Melbourne side of town.

More than 70 vendors exhibiting at the Expo will allow visitors to discover a variety of new ideas and products. On display will be motorised wheelbarrows, mulching equipment, vegetable bins, composters, all variety of plants, seedlings and bulbs, garden tools, books, garden art and more.

There'll be a variety of food options (much of it homemade), entertainment, guest speakers. The Yea township, just a few kilometres away, has many cafes and an award-winning tourism centre at the Yea Wetlands, so there is much to do to round out the day, or weekend if you wish to linger longer.

The Garden Expo is a fundraising event that compliments the club's Open Garden weekend, held on the weekend after the Melbourne Cup, with up to 10 rural and town gardens available for viewing.

For more details, go to the website www.yeagardenexpo.com.au or follow on FaceBook. Tickets may be purchased at the gate or prebook at www.trybooking.com/BZOYD.

Entry includes free parking. Dogs welcome.

SUBMITTED BY GLENDA WOODS

Take a look around our kindergartens

Would you like to take a look at our kindergartens before registering your child for kindergarten or before your child attends our kindergarten in 2023?

Our kindergartens are now offering tours where educators will be available to answer your questions. Tours are limited to six adults per tour, so bookings are essential. You are welcome to bring your child/children with you on the tour. Virtual tours are also available on our website if you are unable to attend.

For booking and more information, see mrsc.vic.gov.au/kindergarten



Photo: Macedon kindergarten educator Micole Mezzatesta

Early Childhood Educators Day 2022

On 7 September, Macedon Ranges Shire Council will be celebrating Early Childhood Educators Day, which recognises and acknowledges the amazing work of our kindergarten educators, and their important contribution to the wellbeing and development of kindergarten children at a pivotal point in their lives. The day is an opportunity for us to say thank you and celebrate their hard work.

SUBMITTED BY CATHERINE CHAPMAN, COMMUNICATIONS UNIT MRSC



Photo: Woodend kindergarten educator Caitey Birchell

Your community diary

— — SEPTEMBER —

- 1..... Community immunisation session WCC
- 2..... Pathways for Carers (walking group)
- 3..... Woodend Farmers' Market
- 3..... Kyneton Horticultural Society Spring Flower Show
- 3..... Macedon Ranges Film Society Short Film Festival
- 4..... Kyneton Horticultural Society Spring Flower Show
- 4..... Father's Day
- 7..... Humanity Talk on hope for climate change
- 9..... Holistic Grazing Course mRSC
- 10..... Chambers Poet @ RSL
- 10..... Fred Smith & the Urban Sea Shanties Community Choir
- 14..... Small Business Webinar
- 14-15..... Mental Health First Aid course – session 2
- 17..... Yea Garden Show, Rotary Club of Yea
- 17..... Chemical Disposal - Kyneton Sale Yards
- 19..... HALT Breakfast - Save your Bacon
- 23..... Public Holiday Friday before AFL Grand Final
- 24..... AFL Grand Final

— OCTOBER —

- 1..... Woodend Farmers' Market
- 1..... Official opening Rotary 100 Community Space
- 13 - 21..... Natural Science Week
- 16..... Lions Sunday Market
- 29..... Hanging Rock Market

— NOVEMBER —

- 1..... Melbourne Cup Day Public Holiday
- 5..... Woodend Farmers' Market
- 20..... Lions Sunday Market

— DECEMBER

- 3..... Woodend Farmer's Market
- 18..... Lions Sunday Market
- 25..... Christmas Day (Sunday)
- 26..... Boxing Day (Public Holiday)
- 27..... Public Holiday in lieu of Christmas Day

Always check with organisers about any events listed. To have your event listed on our calendar just send the details to: content@newwoodendstar.org.au

Kyneton Town Hall events

September will showcase a very special performance by Fred Smith and the Urban Sea Shanties Community Choir. This performance is a culmination of months of choir rehearsals under the guidance of choral leaders Andrew Price and Seija Knight, producing a multi-layered, witty and moving live performance with Fred Smith and his four-piece band. Scheduled for Saturday 10 September at 7.30pm this is a performance not to be missed!





Did you know

you can report your damaged bin or bin lid and have it replaced by Council?

Contact Customer Service
on (03) 5422 0333 or visit mrsc.vic.gov.au/bins

Chamber Poets #81: A call out for musicians

After another successful event in August, lovers of poetry will gather again on September 10 for a musical themed Chamber Poets #81 and to see featured performer, Lauren Lee Williams, who is both a poet and singer.

Chamber Poets #80 featured poets Amanda Anastasi, whose work was centred on climate change, and Tru Dowling, whose verse novel was set in Castlemaine. They read from their newly released books and enthralled the large, enthusiastic audience.

Woodend teenager Talon Gostelow (whose father Ian is also a poet) made a stunning debut at his first public spoken word event. He was runner up for Poet of the Month, which, after much deliberation by the judges, was ultimately awarded to Brian Walters from Barker's Creek.

Chamber Poets has become quite a tourist attraction, with twelve of the poets who read in the Open Section coming from ten different towns, as well as five different Melbourne suburbs.

Tru Dowling said of the event, "What a warm, open room of word-lovers, talented poets, musicians and performers. I was rapt to share my verse novel, as co-feature with the amazing Amanda Anastasi in such a responsive space, alongside a strong Open Section. A great afternoon of thoughtful musing, catchy tunes, poetry and joy, compered by the incomparable Myron Lysenko! I'll be back!"

When asked for a quote about the afternoon, Hepburn Springs poet Bill Wootten responded with this little verse:

Chamber Poets number 80

Featured poems light and weighty

Some were set to a tune

What a glorious afternoon

Maldon resident Lauren Lee Williams will be the featured performer on 10 September and is promoting her new album *She Blew into Town*, which was recorded between lockdowns. Her first album, *Union of Romantic Fools*, was released in 2010.

Williams was involved in the Melbourne poetry scene from the early 80s to mid 2000s, then she picked up a guitar and moved to Central Victoria. She is an acclaimed poet who has published four books of poetry, her latest *Cleanskin Poems* by Island Press Co-operative in 2016, and is also a prize-winning singer/songwriter, whose music is influenced by bluegrass, country and Cajun.

Resident band Black Forest Smoke will support Williams on the day with a handful of their compositions.

All local singer/songwriters are encouraged to come along and perform one original song in the Open Section, and in this way, the afternoon will be dedicated to both original poetry and original songs.

SUBMITTED BY KATRINA BUTTIGIEG

Chamber Poets #81

Saturday September 10 1pm – 4pm

Woodend RSL, 32 Anslow Street

Featuring: Lauren Lee Williams,

Black Forest Smoke, Open Section.

Queries: Myron Lysenko myronpoet@hotmail.com

Big names heading our way for the Mountain Writers Festival

A host of local and national writers, thinkers and performers will descend on the Macedon Ranges in November for the inaugural Mountain Writers Festival.

Originally slated for 2020, the festival will finally take place in Macedon (Wurundjeri Country) from 4-6 November this year.

With a stellar line-up, including Peter Garrett, Costa Georgiadis, Sarah Wilson, Scott Pape, Evelyn Araluen, Aaron Fa'oso, Joelle Gergis, and Tim Flannery, Mountain Writers Festival will be the first Australian writers' festival to focus exclusively on the environment and carries the theme 'Place, Story, Nature.'



Photo: Mountain Writers Festival Director Sonia Orchard

The festival team is led by award-winning local author Sonia Orchard, supported by a dedicated collective of volunteers from across the Macedon Ranges, and aims to bring a literary festival "for all of us – readers, writers, locals, visitors and especially those who care about the environment".

Supported by Visit Victoria under the Regional Events Fund, the festival hopes to become a permanent part of the burgeoning Macedon Ranges community events calendar, attracting locals as well as intra and interstate visitors to our area.

The festival will also be a fantastic opportunity for locals to engage with Australia's leading names in climate change, Indigenous literature, politics, arts, entertainment, and gardening. The event will include both "in conversation" talks and panel discussions, in the intimate surroundings of Macedon's Jubilee Hall and the Macedon Railway Hotel.

Tickets are strictly limited. For more information, visit www.mountainwritersfestival.com.au

SUBMITTED BY CAMERON FERGUS

Advertise your business
here - business card size
advert \$71



Get involved in Autumn Festival 2023!

Last year's Autumn Festival was a huge success, drawing visitors to the Macedon Ranges from near and far. From farmers markets to live music park pop-ups and street entertainment, open gardens, workshops, food trails and more, the festival was the perfect opportunity for local businesses and the community to showcase all that is great about the Macedon Ranges in autumn.

If you'd like to get involved in the 2023 Autumn Festival, make sure to subscribe to the Autumn Festival Management Newsletter for key event and foodie trail submission dates, sponsorship opportunities and marketing collateral.

For information visit mrsc.vic.gov.au/autumn-fest



Party Kits available for hire

Choose to refuse disposable party ware by hiring a reusable party kit for \$10 from the shire's Neighbourhood Houses.

Council is supporting Neighbourhood Houses to be a part of the Party Kit Hire program by sponsoring party kits. Each kit consists of mugs, plates, bowls, cutlery sets, placemats, cake stand and more.



Woodend, Riddells Creek and Gisborne are participating in the trial to help prevent single-use party ware from ending up in landfill every year. The other participating neighbourhood houses will receive their party kits soon this year.

The Party Kits are registered with the Party Kit Network and you can make bookings via partykitnetwork.org/australia or directly through the neighbourhood houses.

To find locations and opening hours visit mrsc.vic.gov.au/Neighbourhood-Houses

BOOK A GARDEN DESIGN CONSULT TODAY ...



Strong focus on our unique Macedon Ranges climate



Expert hedging, planting, & screening advice



Nursery, garden supplies, giftware, vouchers



Lawn advice, repair or installation



On-site garden consults



Excavation, retaining walls, driveways & pergolas



Garden design, softscapes, hard landscapes & treescapes



Specific plant sourcing (can take up to 2 weeks)



WOODEND NURSERY
GARDEN DESIGN & LANDSCAPING

0400 939 656

WOODENDNURSERY.COM.AU



Spoil Dad this Father's Day!

Book any 60-minute Thai massage and receive a **complimentary upgrade to 75 minutes***

WAS \$120

NOW \$100

Gift Vouchers are available!

**Promotion valid for month of September*

0438 062 143

www.ramai.com.au

Grants open for 16 Days of Activism



Macedon Ranges Shire Council is proud to support Respect Victoria and Safe and Equal to deliver its 16 Days of Activism against Gender Based Violence starting on Thursday 25 November, with this year's theme being 'Call it Out Everywhere'.

Ending gender-based violence must happen everywhere: in media, in politics, and online, as well as at home, in our relationships, on the street and in the workplace. Council is committed to supporting this important campaign and building a stronger, safer community for all.

Council's Small Project Grants program is open throughout the year to support community-led projects and initiatives that benefit residents of the Macedon Ranges. Local community groups may apply for Small Project Grants of up to \$1,500 once per year.

If your group has an idea related to the 16 Days of Activism campaign or another community-led project, please contact Council on 5422 0216 to discuss.

Applications for 16 Days of Activism should be submitted before 21 September. For information visit mrsc.vic.gov.au/grants

SUBMITTED BY CATHERINE CHAPMAN, MRSC



HANGING ROCK MARKET

Sat 29th Oct

9am to 2pm

Hanging Rock Reserve - South Rock rd, Woodend

Upcoming Market Dates:

Sat 29 Oct | Sat 10 Dec | Sat 18 March



office@craftmarkets.com.au
www.craftmarkets.com.au

Parking fees apply.
Please no dogs.



@craftmarketsaus

Snap this ↑





YOUNG VICTORIANS HELP CREATE STRATEGY FOR THEIR FUTURE

The state government is putting young people's experiences, needs and ideas at the centre of its plan to support young Victorians and their recovery from the COVID-19 pandemic.

Minister for Youth Ros Spence launched Victoria's first Youth Strategy last month, backed by more than \$600 million from across government in this year's state budget.

To complement the strategy, an additional \$5.3 million will open doors for young Victorians to be involved in policy development, to access opportunities in education, jobs and community, and to support their mental and physical wellbeing.

More than \$1.5 million will provide employment pathways for more than 2,000 young people in the creative and sport and recreation sectors. Under the strategy, young people with lived experience of mental ill health will be directly involved in the design and delivery of a new mental health system that responds to the needs of young Victorians.

Vulnerable young people will have better access to affordable public transport, with \$847,000 allocated in the 2022-23 State Budget for 30-day free public transport passes for school students in crisis.

The Head Start apprenticeships and traineeships program will be expanded to every government school across the state – backed by \$69.4 million in the 2022-23 State Budget. Organisations such as the Youth Affairs Council Victoria, Koorie Youth Council and The Push will help deliver youth-focused initiatives under the strategy, with the sector and the Victorian Youth Congress to help guide its implementation. For more information, visit youthcentral.vic.gov.au/youthstrategy.

Member for Macedon, Mary-Anne Thomas spent International Youth Day in Macedon, visiting Gisborne Secondary School's Project Ready class and speaking with their SRC about current issues affecting youth. "We're ensuring young people are empowered to address the issues that affect them. The Youth Strategy ensures that young people's voices are heard at every level of government."

Ms Thomas also spent time with local Live4Life CEO Bernard Galbally and met with youth leaders involved in group projects and organisations at the Macedon Ranges Shire.

SUBMITTED BY KATE LEE,

Call **5427 3112** or visit **NaturalGrace.com.au**

WANTED

Farm/grazing land to lease

Located within the Macedon Ranges
Regenerative practices will be used for livestock
No fencing necessary

Matt - 0403297737

ADVERTISEMENT

Mary-Anne Thomas MP LABOR MEMBER FOR MACEDON

As your local Member of Parliament I am keen to hear from the community and assist with any State Government matter.

Mary-Anne Thomas



A: Shop 14, Nexus Centre, 9 Goode Street, Gisborne, VIC 3437

P: 5428 2138 E: maryanne.thomas@parliament.vic.gov.au

W: www.mary-annethomas.com.au

MaryAnneMacedon maryannethomasmp

Authorised by MA Thomas, Shop 14, Nexus Centre, 9 Goode Street, Gisborne

SAFER AND MORE AFFORDABLE CARS FOR YOUNG DRIVERS IN MACEDON

The state government is giving more young people in Macedon the chance to save money and ditch their older model cars for a safer, more modern vehicle.

The unsafe2safe trial is now being expanded across regional Victoria, with expressions of interest now open until 4 September 2022.

Up to 150 drivers across regional Victoria, aged 18-25 years old, will take part in this phase of the program, which will provide a \$5,000 subsidy to replace their unsafe and older vehicle with a safer, newer vehicle.

With many young Victorians expressing cost as a key barrier in accessing safer vehicles, this program will help many get behind a safer wheel before hitting the road. Of the program, Member for Macedon, Mary-Anne Thomas said, "This program is critical to ensuring young drivers right across Macedon can purchase a vehicle that will not only prevent serious road accidents, but more importantly, save their life."

The targeted program is part of Victoria's Road Safety Action Plan under the Victorian Road Safety Strategy 2021-2030, which focuses on groups that are over-represented in road trauma.

SUBMITTED BY KATE LEE, OFFICE OF MARY-ANNE THOMAS MP

STATEWIDE FESTIVAL TO CELEBRATE VICTORIA'S PRIDE

Minister for Equality Harriet Shing today launched Victoria's Pride – an annual celebration across the state for the next four years to support and celebrate our LGBTIQ+ communities.

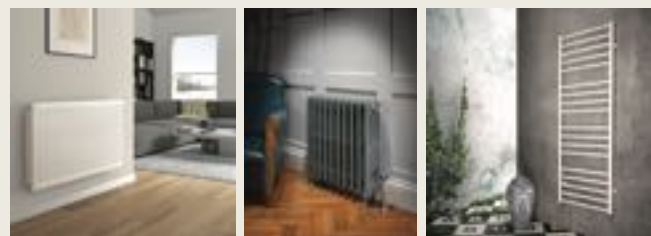
The Labor Government is funding a series of events across regional Victoria, which will kick off Victoria's Pride in December. The summer of pride will close with a one-day street party in Melbourne's iconic Gertrude and Smith Street precinct on Sunday 12 February 2023.

Grants of up to \$15,000 will support arts and culture projects which showcase regionally based LGBTIQ+ artists and highlight regional communities' voices and stories, from community parties and art exhibitions to theatre shows and festivals.

The events will provide an opportunity for LGBTIQ+ people to connect with one another and feel represented, and for people across the state to demonstrate their pride in and support for LGBTIQ+ communities.

The Government has partnered with leading LGBTIQ+ arts and cultural organisation Midsumma to deliver Victoria's Pride. To apply for a Victoria's Pride regional grant or to find out more, please visit midsumma.org.au/regional-activation. Applications are open from now until Monday 26 September at 5pm.

SUBMITTED BY KATE LEE, OFFICE OF MARY-ANNE THOMAS MP



Hydronic Heating

- Radiator panels
- Slab heating
- Wood fired boilers
- Heated towel rails
- Trench elements

Refrigerated Cooling

- Wall hung split systems
- Ducted units
- Cassette units
- Bulkhead hideaway units

M: 0418 128 584 E: info@mrhh.com.au

W: mrhh.com.au

Cuddle bed delivered for end of life patients funded by charity run

Kyneton Health's palliative care patients and their loved ones now have access to a state of the art 'cuddle bed', thanks to funds donated to the health service.

The majority of the funds for the cuddle bed were generated by the Mt Macedon Realty Wooling Hill Run 2021, held in November last year, where locals and tourists were invited to visit the beautiful grounds of the Wooling Hill Memorial Estate to run or walk from 12 November to 12 December.

Central Highlands Rural Health's Chief Executive Officer Maree Cuddihy, along with Susan Jennings and Sue Whitfield met with Troy Upfield, Wooling Hill Memorial Estate, and Lisa Fowler, Mount Macedon Realty, to demonstrate the look snow ALL bed that had recently been purchased with the revenue from the charity run.

The cuddle bed is a specially designed bed that allows family and friends to provide physical comfort to a loved one during end-of-life care as physical closeness can deepen connections and improve quality of life; offering an opportunity for loved ones to lay together and provide compassionate care as people near the end of their life.

Troy Upfield said, "We are thrilled that the hospital has been able to purchase a cuddle bed for their end of life patients. Raising funds for healthcare is so important, and we couldn't have done it without the support of the local community that came and participated, as well as the major sponsor, Lisa Fowler from Mount Macedon Realty."

Central Highlands Rural Health CEO Maree Cuddihy said:

"The 'cuddle bed' will directly impact our palliative care patients and their families, and we couldn't be more grateful. We are so thankful that Troy and Lisa are committed to the wellbeing of the community."

Palliative care helps end-of-life patients manage symptoms and improve their quality of life. Our nurses focus on the needs of the individual and their family and through a combination of medical, emotional, psychological and spiritual support, a person is enabled to live with dignity, peace and comfort for the duration of their illness.

Funds were raised via individual donations, corporate sponsorship, participant fees and general donations. Planning is currently underway for the Wooling Hill Run 2022. Can you give a gift to Central Highlands Rural Health? Donation and fundraising enquiries from individuals, community groups and businesses are always welcome. Please contact the Fundraising Manager via phone: (03) 5321 6555 or email: giving@chrh.org.au

For more information about palliative care, please contact:

(03) 5422 9911 or district@chrh.org.au (for Kyneton and the Macedon Ranges)

(03) 5320 3553 (for Hepburn Shire – through Grampians Regional Palliative Care Team)

SUBMITTED CATHRYN KOSLOFF, CHRH




Activities for kids at Buffalo Sports Stadium Woodend






Active Kids Sports Program

Learn correct sporting techniques and skills to develop confidence and knowledge of sport. Children use a range of equipment from soccer, netball, hockey, basketball and more, and learn skills for catching, rolling and throwing in a relaxed, fun environment.

Sessions are held 10–10.45am Wednesday mornings at Buffalo Sports Stadium Woodend for children 2–5 years. Parent participation is required.



Kosmac & Clemens
OPTOMETRISTS

-  Spectacles
-  Sunglasses
-  Cataract Assessments
-  Contact Lenses
-  Macula Screening
-  Kids Vision

Your LOCAL Optometrists

Just next to K Hub

5427 4577

www.kosmacandclemens.com.au



Enrol now for Youth Mental Health First Aid community courses

Learn how to help young people experiencing mental health problems by participating in one of Council's award-winning Youth Mental Health First Aid courses.

The 14-hour program teaches participants first aid skills to give initial help to young people who are in a mental health crisis situation or in the early stages of a mental illness. The course covers various mental health problems experienced by young people and is delivered using case studies, films and group discussions.

Dates, times and bookings

- Youth Mental Health First Aid course, Romsey Community Hub

Saturday 17 September 9am–5pm, Monday 19 and 26 September 6–9pm

For information, including costs, call 5422 0333 or visit mrcs.vic.gov.au/Youth-Mental-Health

SUBMITTED BY COMMUNICATIONS UNIT MRSC

**We are here.
The next move is yours.
Call us Today.**

Chinese Medicine | Myotherapy | Acupuncture | Chiropractic



MACEDON CHIROPRACTIC

MACEDON CHIROPRACTIC

(03) 5426 3945

26 Victoria st, Macedon

www.macedonchiropractic.com.au

DENISE HOWES COUNSELLING

*Counselling in times of
grief, loss and change.*

Video and telephone counselling,
Face to face counselling

Woodend and Trentham

M: 0412 051 387

E: denise.howes@bigpond.com
W: www.denisehowescounselling.com

MINDFUL SELF-COMPASSION 8 SESSION LIVE ONLINE COURSE

- Are you kinder to others than you are to yourself?*
- Are you tired of criticising and judging yourself?*
- Are you weighed down by feelings of doubt and not being good enough?*
- Are you feeling fatigued meeting the needs of others?*

Discover how Mindful Self Compassion (MSC) can enable you to respond to difficult moments with greater kindness, handle challenging emotions with greater ease and motivate yourself with compassion rather than self-criticism. Having self compassion builds resilience and emotional well-being and reduces anxiety, depression and relationship stress.

Mindful Self-Compassion (MSC) is an empirically supported, internationally recognised, structured well-being program that is based on the ground-breaking research of Dr Kristin Neff and Dr Christopher Germer.

The course will be delivered via Zoom on Monday evenings commencing at 6.30pm (AEDST) with the 1.5hr introductory session on Monday Oct 3. The 8 full sessions are 2.5 hrs per week.

For more information, please contact Denise Howes on 0412 051 387 or email denise.howes@bigpond.com

Counsellor and Mindful Self-Compassion Teacher



Have your say on the Woodend Five Mile Creek Master Plan

Macedon Ranges Shire Council is inviting community feedback on the Woodend Five Mile Creek Master Plan via online or written submissions until 11 September.

Five Mile Creek is a special part of Woodend, linking the town, protecting important threatened species, and offering a beautiful place to walk and enjoy nature. The floodplains of the creek are perfect habitat for the endangered Eucalypt species known as Black Gum, which does not grow anywhere else in Victoria.

Woodend Landcare has been working for over 20 years to clear weeds, revegetate and enhance community access and facilities along the creek. The Woodend Five Mile Creek Master Plan is a shared strategic action plan between Woodend Landcare and Macedon Ranges Shire Council, building upon the great work of Woodend Landcare. It has been funded through Council's Community Funding Scheme.

The master plan will guide habitat restoration projects, support grant applications and inform infrastructure needs to improve the passive recreation and access to the creek for a broad range of users.

A key feature of the plan includes walking / cycling tracks that 'loop' and provide connections to longer trails. These tracks will give locals and visitors diverse experiences such as wide-open spaces, natural and exotic forested areas and opportunities to access the water's edge to watch, enjoy and learn about nature.

Council's Director Planning and Environment, Rebecca Stockfeld, said this was a great opportunity for community members to have their say on the proposed master plan.

"The Five Mile Creek area is central to the Woodend community and provides the perfect surrounds for recreation and the enjoyment of nature. The final

Woodend Five Mile Creek Master Plan will take into consideration community needs as well as ensuring the preservation of the natural environment going forward. I encourage community members to take the time to review the draft master plan and provide their feedback," she said.

The draft Woodend Five Mile Creek Master Plan is available for public comment until 11 September.

Have your say:

- Online at mrsc.vic.gov.au/yoursay
- n-person at Woodend Community Centre Corner Forest and High Streets, Woodend
- In writing to PO Box 151, Kyneton VIC 3444 or email environment@mrsc.vic.gov.au

SUBMITTED BY COMMUNICATIONS UNIT



Digital education sessions

for over 55s

Date: Wednesday 28 September

Venue: Woodend Neighbourhood House

Council's Village Connect program is holding free digital education sessions for people aged over 55. Come and hear from an NBN Community Ambassador who will talk about:

Scam awareness (10 to 11.30am)

Common types of scams, how to detect scams, what to do if you have been scammed, and top tips to stay safe.

Digital preparation for a power outage or emergency (1 to 2.30pm)

Using Wi-Fi calling and mobile hotspots, equipment that may be affected by power outage, preparing your devices for an emergency, and creating an emergency communications kit.



Registration is essential

Contact Abbey Brown on **5422 0262**
or villageconnect@mrsc.vic.gov.au

Village Connect is a new service for older people and carers provided by Council. This initiative is funded by the Australian Government Department of Social Services and managed by Independent Living Assessment (ILA).



A message from your West Ward Councillors



Many of us are feeling excited to see the bulbs popping up and there are many pictures on the different Facebook groups and posts showing the buds of spring.

By the time this goes to print, we should have endorsed the successful recipients of the Macedon Ranges Community Funding Scheme 2022/23 allocations. Council allocates around \$160,000 in funds, which contribute to community and cultural development projects, enhancing the effectiveness of local community groups, supporting local environmental priorities and enhancing places and infrastructure. We know this is all supported by volunteers, that the money we provide can achieve wonderful results when driven by these groups and organisations.

A reminder that every month, applications can be made for small project grants for not-for-profit groups to apply for a maximum of \$1,500 per application. Many groups may not be aware of this opportunity. For the criteria and details, please see the information on our website <https://www.mrsc.vic.gov.au/About-Council/Find-A-Grant/Small-Project-Grants>

We realise that it was only in June that the 2022/23 Budget was endorsed. Councillors have already had a briefing to start considering the process for next year's 2023/24 budget.

We are keen to hear from you all early, so please share your requests and thoughts with us and send an email to mrsc@mrsc.vic.gov.au with the subject

header 'budget submission'.

Speaking of submissions, we would love to hear your feedback on the proposed Woodend Five Mile Creek Master Plan. The Creek is a special part of the town, and we thank Woodend Landcare as we know how much volunteer work they have done over the last 20 years. Five Mile Creek links the town, protects species and allows passive recreation in nature. For example, the Black Gum is an endangered species that doesn't grow anywhere else in Victoria, and areas along the creek are perfect habitat for them.

Over the school holidays, some safety works commenced outside St Ambrose Parish Primary School. Council received many submissions to the last budget from parents and the school and also presentations. Further plans and works to address safety concerns on Brooke Street are progressing.

In July, Council took the pledge in support of the EveryAGE Counts campaign and joined the EveryAGE Counts Coalition. - "Council stands for a world without ageism, where all people of all ages are valued and respected and their contributions are acknowledged. Council commits to speak out and take action to ensure older people can participate on equal terms with others in all aspects of life."

We will be having an event in the coming months to celebrate this.

Village Connect is a new service for older residents and carers in the Shire provided by Council, to support people to stay socially connected and help them find out what other services might be accessible to them. There are some coffee events planned to be held across the shire for people aged over 55. In Woodend, a session will be held at Maison Maloa 13 October from 11am-12pm, and we hope to see many people there. Please book through Abbey at Council 5422 0262.

The Commonwealth Games have just finished, and as you are aware, regional Victoria is to host the 2026 games. We know our Shire and region have a lot to offer, and we are discussing this with other local councils in the region, looking to present some opportunities to the state government and the organisers, which we hope will be supported.

We have been very pleased to have been invited to many community events over the last months. We appreciate the invitations, and please feel free to contact us. I know all three of us will be attending the "Jubilee Gold" 50th Year of the Annual Daffodil and Arts Festival at some point. Kyneton is just up the road, and we hope many of you will also support the festival, which has many community events and activities over ten days this month, culminating in the parade on Sunday 11 September. <https://www.kynetondaffodilarts.org.au/>

Take care. Best wishes, Janet, Mark and Jennifer.

Celebrating seniors in the Macedon Ranges – nominations open

During Seniors Festival 2022, Macedon Ranges Shire Council will present 'celebration boxes' to 25 older residents who have made significant contributions to the community.

This is an opportunity to celebrate the achievements of our older residents and recognise the important contribution they make to our local community.

Residents of the Macedon Ranges Shire aged over 65 (or Aboriginal and Torres Strait Islander people aged over 50) are eligible to be nominated. If you know someone in the shire who has made a difference, make sure you nominate them.

Nominees will be considered on the basis of their contribution to the local community, how they demonstrate active ageing, and promote a positive image of older people.

Nominations close Sunday 18 September. To submit a nomination, visit mrsc.vic.gov.au/seniors-festival or call 5422 0333

Early Childhood Educators Day 2022

On 7 September, Macedon Ranges Shire Council will be celebrating Early Childhood Educators Day, which recognises and acknowledges the amazing work of our kindergarten educators, and their important contribution to the wellbeing and development of kindergarten children at a pivotal point in their lives. The day is an opportunity for us to say thank you and celebrate their hard work.



Share coffee and a chat with Village Connect

Village Connect is a new service for older people provided by the Macedon Ranges Shire Council.



As part of the program, a free 'coffee cup' event is being held for older residents, their families and carers.

Come along to hear about how Village Connect can help you stay socially connected. Enjoy a chat with others in the local community and enjoy a free cuppa and cake.

The events will be held from 11am to 12noon at the following locations:

- 3 Little Pigs, Gisborne, 13 September
- Verdure Bistro, Romsey, 15 September
- Maison Maloa, Woodend, 13 October
- Vics@Seasons, Riddells Creek, 11 October
- Aspy, Lancefield, 1 September and 27 October
- Social Foundry, Kyneton, 6 September and 25 October
- Malmsbury Bakery, Malmsbury, 8 September and 3 November.

Registration is essential: contact Abbey on 5422 0262 or villageconnect@mrsc.vic.gov.au

For more information about the program, visit mrsc.vic.gov.au/village-connect

Vale Richard Chamerski



Richard Chamerski was well known throughout the Macedon Ranges for his amazing art, mostly impressionistic. His sudden death on the July 23rd while receiving cancer treatment has devastated the Woodend community. Richard had been an active member of the Woodend Art Group for the past eleven year. He loved playing his guitar and could be seen busking around town on occasion. A truly lovely, well-respected person who will be sadly missed.

SUBMITTED BY VALERIE PEARSON

Woodend Self Storage (Vic) Pty Ltd



We have 110 storage units
in 5 different sizes to meet your needs.
Trailer hire available.
Affordable prices.
7 day accesses.
Insurance available.

Contact Leonie Barker on 0413 869 583 or www.woodendselfstorage.com.au for a quote.



This year The Mount Players proudly celebrate their 50th Anniversary and after a couple of years' hard work by a dedicated group will launch their own book in October.

From humble beginnings as a travelling music hall to having their own home in the old Presbyterian Church in Macedon, which was sadly lost in the Ash Wednesday fires in 1983 to where they are now, the gorgeous Mountview Theatre! The Players have entertained for 50 years without a break (even after losing their original theatre) bringing an incredibly high standard of theatre to their stage. From intense dramas, hilarious farces, black comedies and memorable musicals the group has gone from strength to strength.

The book will consist of 250 pages filled with photos and stories about it's shows, and, of course the history of how the theatre has become an iconic place that many locals adore... a space that plays a huge role within the local community and beyond. This publication will ensure its history, characters, stories and shows are never forgotten.

If you would like to find out more about this beautiful book or indeed pre-order a copy, we invite you to contact Karlana at karlanasanta@me.com

See you at the theatre!

WRITTEN BY KAREN HUNT



Amazing Activities for Spring!

Spring is here already, and the library has some amazing activities lined up, including:

- Nature Discovery Space (over the school holidays)
- Health in Your Hands – a digital literacy session which introduces the Government 'My Health Record' system and how it works
- Three author talks, including Dr Joelle Gergis, Peter Quarry and Pauline Wilson
- Teddy Bear sleepover in the library
- Belly Dancing
- Gaming and more!!!

While many of our activities are available on a walk-in basis, for some, bookings are essential. Printed programs are available in the library, or head to goldfieldslibraries.com.

Magazine Mania!

As a member of the Woodend Library, you have access to the entire collection of paper magazines across all our Goldfields Libraries branches, including titles such as Gardening Australia, Country Style, The Economist, Country Life and New Zealand Gardener.

Recent additions to our on-the-shelf collection at Woodend include The Koori Mail, Holidays with Kids and Australian Mountain Bike magazine.

For an even wider range, you can use our Libby app on your smartphone or computer, gaining instant access to hundreds of magazines, including a large selection of overseas titles, many in languages other than English.

To find out more, visit us in person or head to ncgrl.vic.gov.au/elibrarynewspapersmagazines

Home Library Service – Let the Library Come to You

Do you know someone who likes to read, but who struggles to get out and about on their own? Our Home Library Service might be just what they need. The service is designed for borrowers who are temporarily or permanently housebound; our friendly library staff will deliver directly to your door, and will also help you select titles from month to month. Home Library borrowers have full access to the Goldfields Libraries collection, including large print books and audiobooks (ideal for readers whose eyesight is no longer what it was). For more information, please contact the Woodend Library directly on 5427 2074.

Reminder: Climate Change talk with author and scientist Dr Joelle Gergis

On Wednesday September 7, world renowned climate scientist Joelle Gergis will join us to discuss her crucial work on the 2022 United Nations Intergovernmental Panel on Climate Change report, as well as her recently published book, *Humanity's Moment*.



Don't miss this informative morning. Book online at goldfieldslibraries.com, or phone us on 5427 2074.

Most Wanted List – New Mysteries of 2022

The Paris Mystery by Kirsty Manning

This exciting new release from local author Kirsty Manning really caught our eye! The Paris Mystery charts the early career of expat journalist Charlotte "Charlie" James, and what better location for an intrepid reporter to discover the thrill of detective work than pre-war Paris? This is the first book in what promises to be a popular series.

The Ink Black Heart by Robert Galbraith

Galbraith's gritty character-driven mysteries have real staying power. You may know Robert Galbraith better by the name J K Rowling.

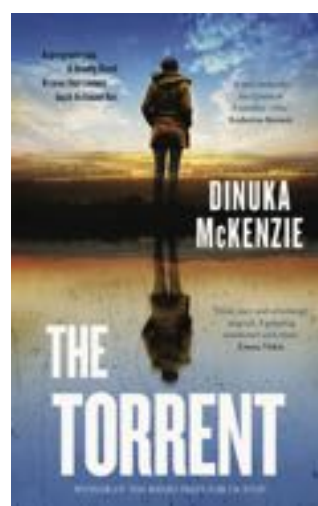
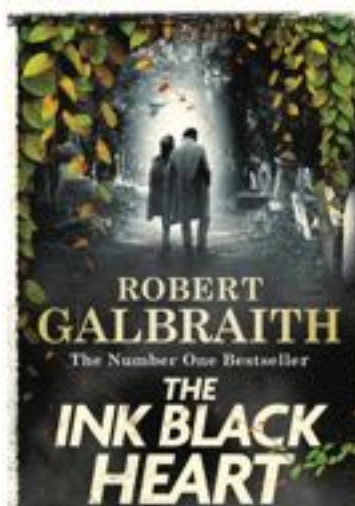
The Torrent by Dinuka McKenzie

A tense Australian country town mystery with a healthy dose of realism. An impressive debut from NSW author Dinuka McKenzie – expect to see more from her soon. Jane Harper, watch out!

Dark Rooms by Lynda La Plante

The ever-reliable, don't-take-no-for-an-answer Jane Tennison is the detective you want on your case – unless you're the guilty party that is! Don't be surprised if this time Tennison's determination to ask awkward questions takes her a long, long way out of her comfort zone.

SUBMITTED BY ADRIAN, WOODEND LIBRARY



Young Voices of Macedon look forward to spring and daffodils

Term 3 brings with it the prospect of spring weather and garden colour after a very cold winter, made especially miserable by the spike of illness in the community. So it is fitting that Young Voices of Macedon are preparing for a performance on Saturday, 3 September at the Bluestone Theatre in Kyneton, as part of the Kyneton Daffodil Festival. Under the direction of Polly Christie and Jess Demare, they will share a 'salon' programme with the Kyneton Primary School Choir, performing songs by Australian composer Paul Jarman and songs from musicals. There will also be opportunities for choristers to perform solos and duets and even magic tricks.

Research has shown conclusively that choral singing boosts confidence and self-esteem in both children and adults. The release of endorphins while singing gives way to positive energy, and the act of learning new skills, refining them and being part of a group also help to generate improved confidence. These findings are certainly borne out in the experience of our young choristers, especially those who may not have well-developed capacities in areas such as sport. Researchers have also noted that singing in a choir is a mindful activity, in that it allows one to become engrossed in



the process and in the song. In so doing, it provides release from concerns and worries. And the experience of our singers vigorously supports the research finding that choral singing generates social cohesion and the potential for making lasting friendships.

The choir welcomes new members from the age of five. Please visit our website ymacedon.org.au

SUBMITTED BY JESSICA DEMARE



Making music and friends with Elly's Music Playtime

Each Tuesday morning, Norma Richardson Hall is bursting with music, singing and lots of giggles, thanks to Elly's Music Playtime. Hosted by musician Elly McKinnon, this music-based play program for children aged 12 months to 5 years features age-appropriate musical activities and focuses on providing opportunities for social interaction for toddlers, pre-schoolers,

and their carers. "Young children and new parents have had limited opportunities to socialise and build friendships and support networks in recent years, and that can be really isolating. Music breaks down the barriers and we have so much fun making a whole lot of lovely noise," says Elly. Lisa Phillips of Sunbury says, "I take my 2-year-old son to Elly's Music Playtime, and we both absolutely love it! Elly is very warm and welcoming, and the environment is super friendly. So much music-based fun that has been amazing for my son's confidence and fun for me too!"

To join in the fun yourself, contact Elly McKinnon at www.ellysmusicplaytime.com or phone 0422 712 846. Trial classes and term bookings are available, however spaces are limited and bookings are essential.

Young Warblers sing at last

After many Covid-related delays and a few false starts, Young Warblers has finally started making beautiful noise weekly at Norma Richardson Hall. Young Warblers shares some ideas (and songs) with local community choir Woodend Warblers – it's all about having a go, for all voices. Led by singing teacher Elly McKinnon (Elly's Music Playtime and Sing Pub Sing), kids learn a range of fun songs – some in unison and some with simple harmonies – while making new friends in an inclusive, supportive environment. Intended for school-aged children from 5 to 15 years, Young Warblers can be found at Norma Richardson Hall in Buckland St Woodend every Wednesday afternoon of the school term (or on Thursdays in Sunbury). Parents are welcome, even encouraged, to join in. Bookings are necessary (trial, term and casual bookings available) and can be made at www.trybooking.com/eventlist/youngwarblers. For more info, contact Elly on 0422712846 or email youngwarblers@gmail.com

SUBMITTED BY ELLY MCKINNON

Macedon Ranges Venturer Unit (MRVU) Queen's Scout Success

MRVU are a district Venturer unit; whilst we are attached to Woodend Scout Group, the unit has members from Kyneton, Woodend, Riddells Creek, New Gisborne and Gisborne.

We've had a very busy couple of years – we didn't skip a beat during COVID, ensuring that we met up each Friday as usual, either online or at the Log Cabin.

This year saw the culmination of our hard work when an unprecedented six Venturers achieved their Queen's Scout Award. The Queen's Scout Award is the peak award for members in the Venturer section of scouting. It takes a Venturer close to 300 hours to achieve this award, which is made up of 17 badges in a wide variety of areas, and they achieve it at a time of their life when they are going through the trials of teenage years, when they are under pressure from school, when they are resolving the larger issues of who they are and which

direction they want to take in life.

Achieving the Queen's Scout is not only about passing badges. A potential Queen's Scout is evaluated on whether they have fulfilled, and will continue to fulfil, their Scout Promise of service to their God, their country and their community.

The Queen's Scout Award is made up of four components – Community Involvement, Adventurous Activity, Personal Growth, and Leadership.

We are extremely proud of Tess, Andrew, Ilise, Maya, Harrison and Reuben, who have all worked extremely hard over the last three years, overcoming many challenges, including lockdowns and the being unable to attend activities and events, as well as the usual challenges of achieving the peak award.

We were honoured to have Mayor Jennifer Anderson in attendance at our ceremony to present the 'honour board' hide.

SUBMITTED BY TRACEY EAGLE VENTURER LEADER, MRVU



Pentanque goes to primary school

Having visited the Woodend-Hanging Rock Petanque Club at the beginning of the year, Newham Primary School students were keen to meet up again. It was exciting for the students to return the favour and invite the club to visit their school, and the school carpark was cordoned off during the morning for some spirited play between teams of students from Years 3-6.

Club members have volunteered weekly to support Newham students to hone their skills in the unique game of Petanque. During this session, the year three students were introduced to the game in preparation for taking on the 4,5,6s on Newham Primary school's upcoming French Day.

SUBMITTED BY SHARON GLEDHILL, WOODEND PRIMARY SCHOOL



WOODEND HANGING ROCK PÉTANQUE CLUB

THURSDAY EVENINGS - 5 PM - OCTOBER TILL APRIL

NO EXPERIENCE REQUIRED - TUITION GIVEN

ALL AGES WELCOME

MAKE NEW FRIENDS

BBQ AND BYO

www.petanqueattherock.com.au

RESTORATIVE YOGA
FOR THE "FAINT OF HEART"



with *Jahne Hope-Williams*

50+ YEARS OF 'WELLNESS YOGA'
SUITABLE FOR PEOPLE IN RECOVERY,
SMALL, SMALL CLASSES - INDIVIDUAL CARE

BOOKINGS, EMAIL: YOGAFIRST2@BIGPOND.COM

Are you ready for change?



KATHRYN FORTUNA

Relationship Counsellor

Online, Face to Face, Bendigo, Woodend, Global.

Warm, genuine, open and connected, Kathryn works as a Relationship Counsellor, supporting couples to reconnect, communicate, and truly enjoy their relationships on a whole deeper level.

LGBTIQAH++ BOOK NOW.

"Kathryn is a skilled Counsellor who brings much wisdom to sessions with clients and has an amazing way of making clients feel held and appreciated for who they are. I would highly recommend Kathryn."

Manka Collins - Business Operations
Leader Counsellor



www.kathrynfortuna.com
kathrynfortuna@gmail.com
Phone 61 400 196 519

Photo: Hubert Weisrock , Forrest Street Woodend




rangesmedical

Skin Cancer Clinic



At Ranges Medical, we provide comprehensive skin checks, using the latest high resolution Total Body Photography and Dermoscopy skin imaging technology from FotoFinder. It enables us to detect and diagnose skin cancers at an early stage and to monitor any suspicious lesions, as well as avoid unnecessary surgery.

 2 out of 3 Australians will be diagnosed with skin cancer by the age of 70.



Comprehensive skin checks are now a **two-step process**, starting with **Total Body Photography** followed by a **Dermoscopy skin check consultation** with the GP where highly magnified images of atypical moles can be assessed and analysed.

Step One



If you have more than 100 moles a longer 45 min appointment is required.

An annual skin check enables us to compare changes against your previous skin check to detect early changes.

Step Two



Ranges Medical provide biopsy, cryotherapy, photodynamic therapy and surgical excision and facilitate advanced skin surgical treatment with skin flaps and skin grafts.



Dr Bronwyn Edmunds and Dr Ashvin Arul are accredited Skin Cancer Doctors with the Skin Cancer College of Australasia.



 182 Station Road, New Gisborne

 rangesmedical.com.au  8373 5420

To book your next Skin Check, please call Ranges Medical on 8373 5420.



LAWYERS

- Administrative Law / VCAT Proceedings
- Business & Commercial Transactions
- Commercial & Civil Litigation
- Conveyancing & Property
- Criminal Law (including Family Violence & Intervention Matters)
- Family Law
- Franchising Law
- Partnership
- Personal Injuries Litigation
- Powers of Attorney, Guardianship & Administration of Estates
- Retail & Commercial Leases

WOODEND OFFICE

110 High Street,
WOODEND VIC. 3442
T: +61 8290 0277

info@mdmlawyers.com.au

ESSENDON OFFICE

Level 1, 268 Keilor Road
ESSENDON NORTH VIC. 3041
T: 03 9338 8511



KEEN TO GET THINGS DONE AND OVER WAITING FOR TRADES TO TURN UP?

A COVID SAFE EXPERIENCE

Dear Home Owner,
IF YOU'VE BEEN THINKING ABOUT:

- Additional powerpoints
- Improving your network for working from home
- Saving money with Solar
- Keeping cool with a new split system

... THEN THIS IS YOUR IDEAL CHANCE TO GET THESE THINGS OFF YOUR WISH LIST AND INTO YOUR HOME!

"Extremely happy with the service the Bluegum Electrical Team provide, they are always on time, reliable and a pleasure to deal with. Highly recommend."

Sue, Woodend

WE PROMISE TO SAVE YOU TIME WITH:

- Fixed price quotes** no surprises
- Set booking times** on-time arrival with courtesy calls
- Spotless service** we leave no trace or your house will be cleaned on us

BECAUSE YOU ARE IN WOODEND YOU CAN SAVE \$55 ON A CALL OUT FEE WHEN YOU BOOK THIS MONTH.

Call 1300 306 342 to SAVE \$55 right now.

bluegumelectricalsolutions.com.au



**Intelligent
Training
Solutions**

**Need your FIRST AID or CPR Certificate?
Go with a trusted local provider!**



Our first aid course will give you the skills and CONFIDENCE to provide initial emergency care using approved first aid principles with an approach that is easy to understand.

Starting from \$135 - HLTAID011 Provide First Aid
(includes HLTAID009 Provide CPR) or
\$95 - Annual CPR Refresher Only (HLTAID009)

LOCATIONS:

Woodend; Kyneton; Romsey; Gisborne; Lancefield.

For more information or course locations, visit our website
www.its.edu.au or contact us on 03 5415 0217 or
admin@its.edu.au

Delivering first aid within the Macedon Ranges since 2015!

CARING FOR VICTORIA'S INJURED WILDLIFE

The state government announced it would be providing funding to support wildlife rescue volunteers.

Mary-Anne Thomas said that applications for the Wildlife Rehabilitator Grants are now open, with \$230,000 available to support wildlife rehabilitators in Victoria. “

Wildlife shelter operators and foster carers can apply for grants of up to \$3,000 for equipment, infrastructure, consumables, education and training.

There are more than 700 registered volunteer wildlife rehabilitators in Victoria playing an important role in rescuing and caring for injured, sick or displaced wildlife and releasing them back into the wild. “The work that wildlife shelters and foster carers do is critically important to help rehabilitate injured and orphaned wildlife so animals can be released back to the wild – and that’s why we’re continuing to provide support to them,” said Ms Thomas.

Last year the grants were provided to 120 wildlife carers and shelters, funding a range of expenses from new enclosures, nesting boxes and temperature control systems to medication, feed and rescue equipment.

The funding is part of the Labor Government’s Biodiversity 2037 plan – to stop the decline of native plants and animals and improve the state’s natural environment.

Applications close on Tuesday 6 September 2022, to apply for a grant go to: wildlife.vic.gov.au/grants/wildlife-rehabilitator-grants/

SUBMITTED BY KATE LEE, OFFICE OF MARY-ANNE THOMAS MP



Contact Vlad 0400 563 563
E: info@storagewoodend.com.au
22 Wood Street

SECURE SELF STORAGE UNITS

**REFRESH,
REVITALISE
+ RENEW**

- Anti-Ageing Facials + Peels
- Microdermabrasion
- Cosmetic Injectables
- Micro Needling
- Massages
- Waxing
- Manicures + Pedicures

THE SPA SKIN+BODY 5428 8800
3/31 Brantome St, Gisborne
www.thespa.com.au

**Massage
Pilates
Remedial
Rehabilitation**
with Pamela Kell

By appointment
22 Goode Street
Gisborne
5428 1000
0408 093 098

Assisting in the repair and maintenance
of your body

KinderGym

Utilising the stadium this program is based on developing gross motor skills, confidence, balance and social skills. KinderGym is a structured class with free play options for children to explore the array of equipment on display.

Sessions are held Fridays at Buffalo Sports Stadium Woodend as follows:

• 10–10:45am for 1–3 year olds

11am–11:45am for 4–5 year olds

For more information, including program costs, call 5472 3411 or email buffalo@mrcs.vic.gov.au



HOLGATE brewhouse
Taproom
Your new local

Happy Hour on Thursdays from 5pm
Open for lunch every day
Bottleshop open every day

Enter via Anslow St, at rear of historic Holgate Hotel
79 High Street, Woodend holgatebrewhouse.com




BOURKIES
BAKEHOUSE

**OPEN DAILY
from 7am**

5427 2486
Shop 1-3 115 High Street Woodend
www.bourkies.com.au



Wine Review

By Patrick Eckel

Introduction

The grape growers and winemakers of the region are just as excited as the residents that we are moving into spring, with the soggy vineyards starting to dry out, the soil warming and buds getting ready to burst in late September or early October. A new vintage will begin! The wines this month come from one of the champions of sparkling wines in the region, Hanging Rock, and a consistently good producer of Pinot Noir and Chardonnay in Lane's End Vineyard.

NV Hanging Rock Cuvée XVIII

A honey and jasmine note to nectarine fruit on the nose; there is a lovely freshness of wild strawberry and fig that is set against Meyer lemon. There is a continuation of the honeyed jasmine notes on the palate with a litheness of acidity to give flow and balance. A mineral drive frames the finish with a touch of flint, to a melange of red berry fruits. Drinking well now, but will be sure to reward holding a number of years in bottle.

Rating: 94 | Price: \$50 | When to Drink: 2022 - 2034

2020 Lane's End L'autre Pinot Noir

A medium but vibrant red in the glass; the nose gives black cherry that is set against a touch of fennel, earth and understated spice. The palate has a backbone of finely textured acidity and tannins that are part fruit and oak, giving it a savoury contrast to red and black fruits; the finish is laced with black tea and delicate spice, with length of cherry and wild strawberry.

A very good example from the 2020 vintage.

Rating: 93 | Price: \$34 | When to Drink: 2023 - 2029



**You can now find us
on-line at**

www.pestle.com.au

5427 4500

4/130 High St Woodend
Call us if you need something specific and we can deliver to your door.



**Distilled By
People Who
Love Their Gin**

COME & ENJOY THE BIG TREE EXPERIENCE AT
OUR DISTILLERY DOOR OR PURCHASE ONLINE
Please check our website for current opening times.


Big Tree
DISTILLERY

307 Hennerbergs Road,
Newham.
1300 040 573
www.bigtreedistillery.com.au
scan the QR code to shop



Big Tree Distillery to reopen tasting room doors for spring.

Situated on Jack's Springs Farm overlooking the Cobaw Ranges in the picturesque hamlet of Newham, the Big Tree gin tasting room will reopen for spring. The tasting room and courtyard will be open most weekends and also on Mondays over spring and summer.

It is best to check the website for opening times as they will vary. Or alternatively you can visit their market stall at the local farmers markets that are held in Kyneton, Woodend, Riddells Creek and Lancefield to name a few.

Look out for the GiN Bug.



Langley | McKimmie

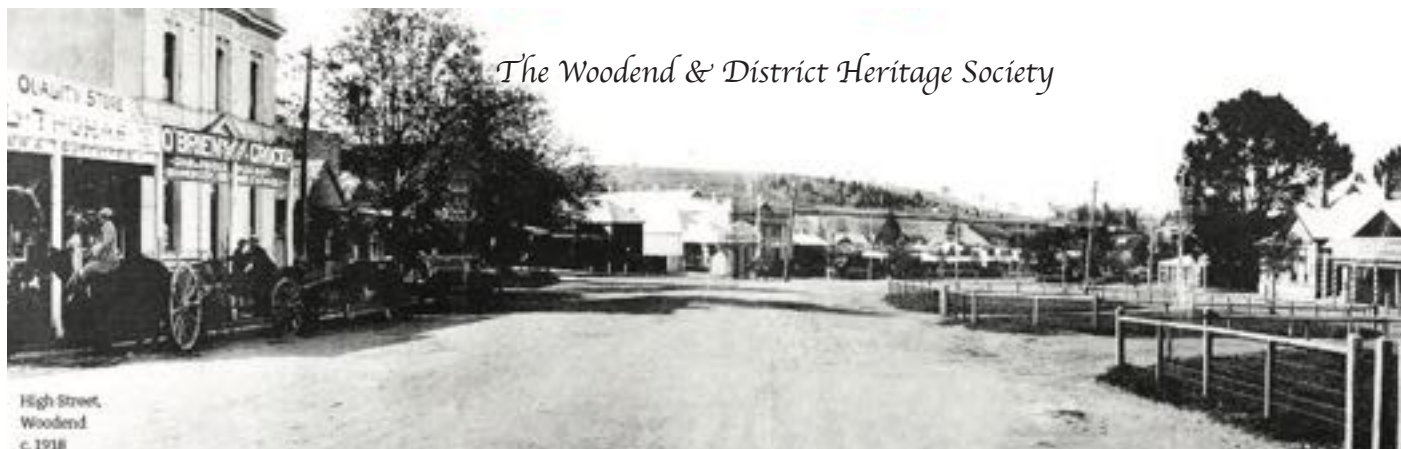
Chartered Accountants

- Business Advisory
- Accounting and Taxation Services
- Superannuation
- Audit and Assurance
- Bookkeeping Service
- Corporate and Administrative Services

17 Nicholson Street, Woodend

T: 03 5427 8100 | E: info@lmck.com.au

www.langleymckimmie.com.au



The Woodend Swimming Pool

In 1927, an idea first suggested in 1906 was finally brought to fruition when a dam near the Five Mile Creek was enlarged to become a natural swimming pool. The area was known as the Carp Hole. The pool was excavated until it spanned two acres, and by October the Star reported that it was nine feet deep. The water was brought through a four-foot pipe from the weir in the Parks and Gardens Reserve. The channel for the pipe was formed by a team of bullocks. Public support was strong, and the Star announced that on one day, 3 July 1927, £30 was raised for the project.

The pool became known as Lake Earnshaw. Constable Claude Earnshaw was Officer in Charge of the Woodend district from 1926 to 1936. He initiated the project for the enjoyment of locals, particularly Scouts, and to attract Scouting groups from around the state. His son, Ernest Earnshaw, was later stationed in Woodend as Officer in Charge for many years. In 1927 he made the news for rescuing a ten-year-old girl, Edith Nicholls, from possibly drowning in the pool.

The need for an 'up-to-date' concrete pool gained strength, as enthusiasm for swimming grew. Forty people attended a public meeting in 1934, where Mr L. M. McLean enthused about a concrete pool for locals and tourists. Tenders were received in 1939 and it was eventually built where the current Visitor Information Centre now stands, funded by public donations and a state government grant.



Photo 564: This picture comes from the collection of the late Gordon Cranny and probably shows the early stages of the construction of the first Woodend swimming pool on Five Mile creek. On the far side, a group of men are standing with a bullock team.

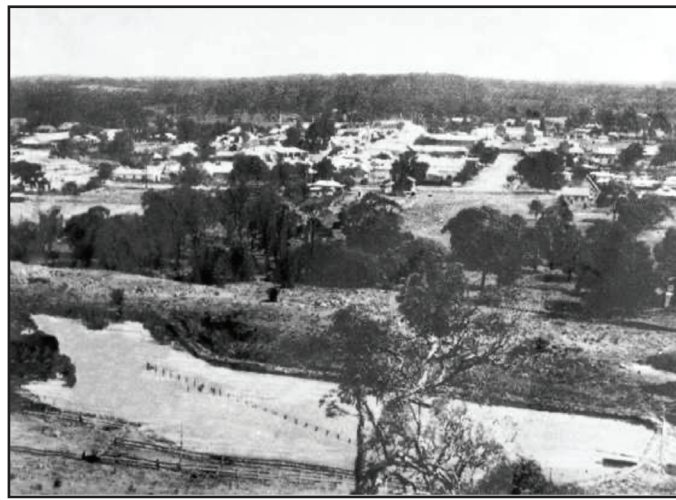


Photo 202: Right - A view of Woodend taken from Golf Course Hill which shows Lake Earnshaw with a diving board.

SUBMITTED BY JANE HOLTH



Woodend Bookshop
Quality second hand books
104 High Street | T: 5407 9181
ed.irons53@gmail.com | 0448 661 373

16,000 quality, affordable second hand books, on almost every topic imaginable.



PETE'S GARDENING & MAINTENANCE

- ✓ MOWING
- ✓ WEED CONTROL
- ✓ GUTTERS
- ✓ PRUNING
- ✓ CLEAN UPS

0438 488 776

Calder Fly Fishing Association 10th Anniversary Open Day

Intended to promote the sport of fly fishing, the Calder Fly Fishing Association 10th anniversary Open Day has attracted a great deal of interest and has already secured the appearance of many well-known fly fishing people. Among them, world champions, specialist equipment suppliers, the Victorian Fisheries Authority, Wilderness Fly Fishing, and a not-for-profit group, Mending Casts, who promote fly fishing as a wellbeing therapy for people recovering from cancer.

Imagine a lake, river or rippling rocky mountain stream, the graceful curve of a fly line with fly snaking out in a loop across the water, a swirl, a splash and then the successful catch and release of a trout. (Pictured is ecstatic Calder Fly Fishing Association member Mitch Siddle, with a personal best brown trout, just after attending a lake fishing course. That's the excitement of fly fishing.)

Are you intrigued by the technique of fishing with a near weightless fly, using only the weight of the casting line and the flex of a matching fly rod? Interested in the knowledge required to "match the hatch" of the trout's favoured bugs; the aquatic nymphs, larvae and beetles that inform the fly patterns designed to fool a trout? Did you know that you can use fly fishing techniques for fishing in

saltwater? Maybe you're a practising fly fisher who would like to learn some more from the experts?

This will be your chance to watch up close and try casting and fly tying, peruse or buy latest equipment, attend expert presentations, and maybe buy a lucky raffle ticket for a fly rod, fly tying vise or other prize.

The event will be held Woodend will host the event at the Buffalo Sports Stadium, 1-29 Forest Street, from 10am to 4pm on Sunday 2 October 2022

Further information on the club and updates on our events is available on www.calderflyfishing.com.au

SUBMITTED BY LOUIS BOKOR, CALDER FLY FISHING ASSOCIATION

Local cricket club gearing up for the new season



Although the weather recently feels anything but summer, cricket season is coming up quickly and Woodend Cricket Club is on the lookout for any potential new (playing, non-playing or totally new to the game) members.

Woodend Cricket Club is a fun and family-oriented cricket club based in Woodend playing home games at Gilbert Gordon and Racecourse (Buffalo) ovals. We play our cricket in the Gisborne District CA, which encompasses Wallan and Romsey to the east, Kyneton and Malmsbury to the North, Bacchus Marsh and Melton to the west, down to Sunbury.

We currently facilitate junior cricket from Woolworths Cricket Blast (cricket's version of Auskick) all the way to Under 17s. Our current junior teams are mixed, and while we currently don't field a dedicated girl's or women's team, we'd love to if there is enough interest!

We currently field three senior teams, our first XI in the competition's top grade down to our third XI playing in the One-Day 35 over a side, in a more social competition.

Whether you just like a hit in the backyard, it's been years since you played or you've never played before, we welcome all down at Woodend! Our preseason will begin in late August ahead of the first games in early October.

So, if you or anyone you know has the slightest interest in playing cricket in the region this summer, be it seriously or socially, I encourage you to get in contact. Feel free to email woodendcricketclub@gmail.com with any queries, or visit play.cricket.com.au, enter "Woodend" and follow the prompts to register!

SUBMITTED BY TOM ROBSON - CAPTAIN, FIRST XI, WOODEND CRICKET CLUB.



Girls and women's cricket expanding at Macedon Cricket Club

Macedon Cricket Club is growing their girls and women's cricket program after a successful 2021-22 season. The growth is happening on and off the cricket field with new girls' teams, the appointment of female head coaches and the appointment of women to the club's leadership committee.

Last season, the club entered a girls-only team in the Under 13's and a women's team in the Gisborne District Cricket Association female competitions. Both teams had exceptional seasons, with the younger girls learning the game and experiencing the thrill of match competition, whilst the women's team were unbeaten throughout the summer and won the GDCA Kookaburra Women's League premiership trophy.

"The Under 13 girls had a wonderful first season," said Emily Wilkinson, who will be sharing the U13 head coaching responsibilities with Bella Shaw this

season. "There was so much excitement and such a great spirit amongst the girls", she added. "The thrill on the girls' faces when they hit their first four or take their first wicket is delightful to see, and excitement is so contagious."

"Emily and Bella's progression to head coaching responsibilities is another step forward for the Macedon Cricket Club," said Amy Miles, who joins with Kym Riley as the first women on the club's management committee. "Last season, we provided opportunities for our Under 17 girls to complete the Cricket Victoria coaching program and take an active role in coaching our U13 girls. It was such a huge success with enormously positive feedback from the players, parents and the young coaches. This season we're going another step further and appointing our first female head coaches for our U13 girls' team.

The growth in girls and women's cricket at Macedon Cricket Club has been quite extraordinary. This season, the club is seeking girls and women to join the U13, U15, U18 and senior women's teams. Only four years ago, the club introduced its first U17 girls' team and last season they added a U13 and women's team. This year, with women on the committee,

older girls taking up head coaching roles and plans for a new U15 girls' team, there has never been a better time for girls and women in the area to give cricket a go.

The club emphasises that success for the women's and girls' cricket program is not defined by wins and losses but through growth in membership and the positive spirit in which the game is played. "We're competitive on the field," says Amy, "but we're competitive whilst still being respectful and encouraging, not only to our team mates, but also the opposition. We want to be known as a team that plays community cricket with enthusiasm, passion and respect."

The age-tiered competitions will be played on Friday evenings, commencing mid-October, and the women's competition will be played on Sunday afternoons.

Club membership enquiries for the junior girls and senior women's team are very welcome. For more information, you can email macedonwomenscricket@gmail.com and connect with Amy Miles and Kym Riley.

SUBMITTED BY TIM SHAW

Getting ready for the new season

As we emerge from winter, we begin preparations for the coming Pennant and Summer seasons.

Looking for new members for the coming season

The new Pennant Seasons (Midweek and Saturday) are not far away. If you are a player with some experience, and you believe you have what it takes to be a competitive bowler or a keen social bowler, please give us a call.

If you are thinking of taking up bowls and may be interested in being part of one of our teams in the future, please get in touch and come on down for a free trial. We can provide everything to get you started ... the bowls and the coaching.

Social bowls every Wednesday

We have a Social Bowls Program every Wednesday from 12.30pm (weather permitting). As the weather starts to improve, this is likely to be every week.

The cost includes several games of bowls, afternoon tea and raffle prizes.

Bookings are essential so call the club on 5407 9220 prior to 11am to put your name down.

The tale of two greens

Woodend Bowling Club is very fortunate to have the use of two bowling greens – an all-weather carpet green and a traditional grass green.

The all-weather carpet green allows us to bowl all year round, although winter sometimes does present some challenges when it gets a little too cold. This is an excellent, artificial surface that provides a very level and true bowling experience.

Our grass green is in approximately the same location as the first bowling green in Woodend 132 years ago, although the surface has been changed many times over the years. The current grass green goes through a dormant period during Woodend's extreme winter and is now beginning the process of recovery under our greenkeeper Dyson.

Whilst most of our Pennant, Competition and Tournament bowls are played on the carpet green, we use the grass green for most of our Barefoot Bowls session, as it provides a more traditional and enjoyable social experience. The ability to use both greens also gives our members the opportunity to practice on both surfaces.

For more information visit our website at www.woodendbowlsclub.weebly.com.

SUBMITTED BY MIKE DORNAU, PRESIDENT, WOODEND BOWLS CLUB

ARBORIST



Josh Nicholas | 0431 764 750
Professional Arborists servicing the Macedon Ranges
jueshuex@yahoo.com | thetreedavinci.com.au

CARPENTRY

Paul Gaskin
Qualified Carpenter
0438 440 986

Decks, Pergolas
Bathrooms, Renovations
& all your carpentry needs,
throughout the
Macedon Ranges
Free quotes



DRAFTING SERVICES



DESIGN AND DRAFTING SERVICE

Construction plans
Design concepts
Town planning applications

With over 25yrs experience
servicing the Macedon Ranges and beyond
Brett Franke: Registered Building Practitioner
Call Brett 0408 054 472

HANDYMAN

HANDYMAN SERVICE

Servicing the Macedon Ranges
honest, reliable, friendly and local

Phone Peter
0431 252 477

Minor repairs Dripping Taps
Basic carpentry Gardening
Fence repairs Painting
Mowing Odd Jobs



HOME RENOVATION

HOME RENOVATIONS & MAINTENANCE

Specialising in
kitchens | bathrooms | pergolas and decks
general maintenance | prepare for sale
rental properties

RELIABLE - LOCAL - PROFESSIONAL
Call Mark now to arrange a free quote
Mob 0411 555 925

JEWELLERY CONSULTANT

KERRIE GASKIN JEWELLERY CONSULTANT

Qualified Gemmologist
Diamond Grader



Engagement Rings
Remodels, Repairs

0403 128 757

LANDSCAPING



Landscape design | Paving
Decking | Pergolas
Retaining walls | Lighting
Irrigation | Real & artificial turf
Planting | Excavator wet hire
and much more

Contact Adam for a FREE quote 0424 033 087
aghent_@hotmail.com
www.aghentlandscapes.com

PAINTING

GEE'S
Painting etc.
Call Steven
0402 079 482

PLUMBING

Blocked Drains | Hot Water Bathroom Renovation

0431 138 101



Local Plumbing Solutions
for the Macedon Ranges

www.kennedysplumbing.com.au

PLUMBING AND GAS FITTING



Hot Water Units - Gas Fitting - Split Systems
Hydronic Heating - Rain Water Systems
Bathroom & Kitchen Renovations

Servicing Macedon Ranges - No job too small
Paul Murphy 0438 298 659

TAXI SERVICES

Crown Cabs
Available on the iPhone ANDROID APP ON
App Store **Google play**
DOWNLOAD THE CROWN CABS APP FOR YOUR NEXT RIDE
www.crowncabs.com.au
Bookings: 1300 12 13 14

TREE SERVICES

A&P Tree Services

- tree pruning / removal
- stump removal
- tree planting / transplanting
- rope & harness climbing
- confined space removal
- fully insured

Professional commercial & residential tree maintenance, all work carried out by qualified arborist
Call Anthony 0417 059 969



Individual Tax Returns
Bookkeeping
Business Returns and Advice
Self Managed Superannuation

The Bank 78 High St Woodend, Vic 3442
t: 03 9361 1111
e: info@rotallieo.com.au
1300 133 733

We can help you with all of your accounting and compliance needs



FOR ALL YOUR HIRING NEEDS

8-12 Beauchamp Street, Kyneton VIC 3444

PHONE: (03) 5422 2311

Email: kynhire@bigpond.net.au
website: www.kynetonhire.com.au

An insight into diversity, inclusion and disability through sport

Students in Years 7, 8 and 9 at Sacred Heart College, Kyneton, had the opportunity to gain insight into living with a disability when the WheelTalk Disability Awareness Program visited the College during a two-week period in August. WheelTalk is an initiative of Disability Sport & Recreation that brings Victorian presenters with a disability who are actively involved in sport and recreation into schools for an interactive program that encourages students to think about diversity, acceptance and disability – with a primary focus on inclusion.

Our presenter was Peter Ogunyemi. Peter began the first sessions by sharing the story of his life – born into poverty in a village in Nigeria, Africa, with polio. Peter was able to feel his legs and even ‘shake them’ a little but was unable to walk. He overcame the most incredible daily challenges to get himself to a school three kilometres away that sadly did not value his contribution. His parents did the best they could, but life was exceptionally difficult. Peter explained that one day a friend of his made him a set of crutches, allowing him to stand – the greatest day of his life! Another influential friend introduced him to training at the local gym, where he saw an opportunity to develop and grow as a person. As his sense of self-worth grew, so did his physicality. This larger than life individual soon developed into a power lifting champion, flying to Sydney to represent his country in the 2000 Olympics.

During the sessions at the College, Peter utilised sport to create a fun and safe environment where students can experience a short period of time without the luxury of legs. He enjoys sharing his story, encouraging students to love who they are, to accept others as they are, to always try their best and be grateful for the opportunities afforded to them simply by living in Australia. He encourages everyone to wake up in the morning, look in the mirror and see someone who is confident, someone who is ready to take on the day. Without the discovery of sport, Peter believes he would still be on the streets, crawling around without a wheelchair, begging for money and unsure of where his next meal was coming from.

As part of each session, students were given the chance to experience some time in a wheelchair, navigating the challenges of wheelchair basketball. The experience, while unique and fun in the short term, enhanced the students’ appreciation of the challenges faced by others.

Comments made by students following the lessons included:

I thoroughly enjoyed wheelchair sports. It was interesting to experience how some people get around every day. The instructor, Peter, was very nice and inclusive, and I found his life story interesting to hear. (Sophie)

I had heaps of fun playing on the wheelchairs and meeting Peter and learning his story. (Tom)

We are so thankful to Peter for sharing his story and imploring us all to embrace life as we know it, because what we see as ‘normal’ is actually a luxury to many.

WRITTEN BY LAUREN WHITE, PHYSICAL EDUCATION TEACHER, SACRED HEART COLLEGE KYNETON



The best environment for the Senior years

A choice of pathways to suit learning styles & future aspirations.

Limited vacancies for Years 7 - 12, 2023.

Don't miss our next College tour: Tuesday 11 October.

Bookings are essential and can be made via the College's website.

Learn. Care.
flourish

SACRED HEART COLLEGE KYNETON

A Ministry of Mercy Education Limited - ABN 69 154 531 870

www.shckyneton.catholic.edu.au
T: 5421 1238 E: dlawrence@shckyneton.catholic.edu.au

