

The New Woodend Star

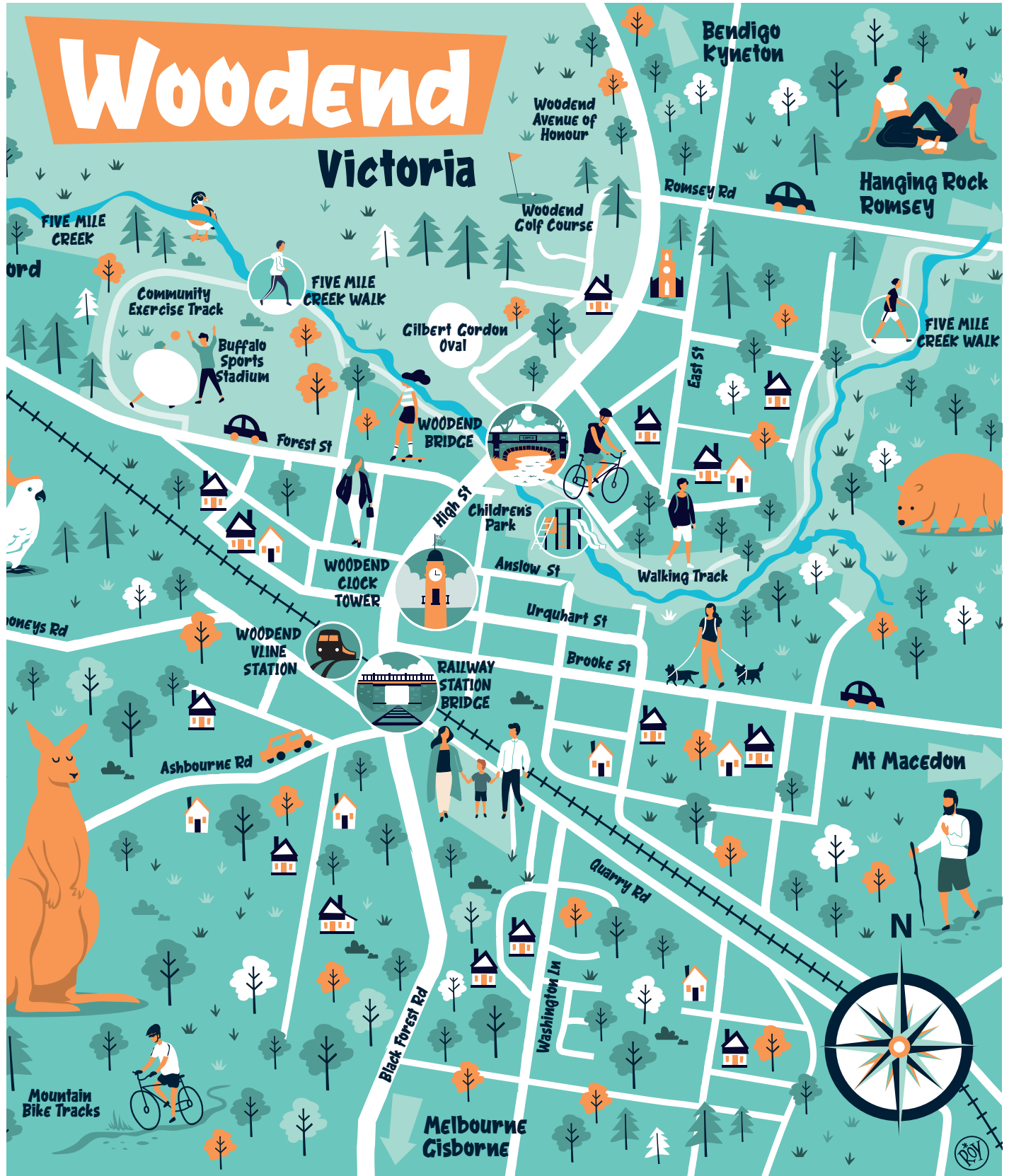
Proudly published by Rotary



Club of Woodend

November 2021
Volume 25 | Issue 10

First published 1997 – by the community, for the community



Bespoke map created by Chris "Roy" Taylor

Woodend Traders putting Woodend 'on the map', page 17 ...

The New Woodend Star and the Rotary Club of Woodend acknowledge the Dja Dja Wurrung, Taungurung and Wurundjeri Woi Wurrung Peoples and their Ancestors as the Traditional Owners and Custodians of the lands of the Macedon Ranges on which we meet, work and live. We recognise their living culture and continuous connection to the land and waters in our area and pay our respects to their Elders past, present and emerging.

PUBLISHER:

The Rotary Club of Woodend
 ABN 32 685 225 No. A0021518E
 PO Box 333 Woodend 3442

Published monthly (except January). Distributing 4,100 free copies across Woodend 3442 postal district.

NEXT EDITION:

If you would like to contribute an article to the Star please submit your story [with pictures, if you have them] by email to content@newwoodendstar.org.au. The cut-off date for copy is the 15th of each month, preceding publication.

FIND US ONLINE

www.newwoodendstar.com

READ CURRENT + BACK ISSUES

www.newwoodendstar.com/view

Follow *The New Woodend Star* on issuu.com to receive alerts when the next edition is available

ADVERTISING RATES

Complimentary business editorial when booking 3+ adverts.

SIZE	DIMENSIONS H x W		COST
Trade services	40	60	\$50
Eighth page	55	90	\$71
Quarter page V	134	90	\$142
Quarter page H	55	190	\$142
Half page V	277	90	\$263
Half page H	134	190	\$263
Full page	277	190	\$435
Insert your brochure x 3850			\$462

CONTACT US

- @ content@newwoodendstar.org.au
 - ☎ 0458 525 671, 10-3 Mon-Thurs
 - @ accounts@newwoodendstar.org.au
- Questions? Email preferred

MANAGEMENT COMMITTEE:

Mick Deviny	Terry Longton
Tim Webber	Jane Watters
Kellie Flanagan	Deidre Willmott
Robert Rushford	Josephine Falzarano

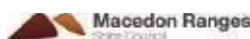
DISCLAIMER:

Articles and comments published in this newspaper are the result of contributions and relevant news articles pertinent to the Woodend district. No person from the Rotary Club of Woodend Inc., *The New Woodend Star* or the editorial team is liable for any mistakes, omissions, or misprints. They make no representation of any description as to the truth or accuracy of any statement contained herein and accept no liability for any loss suffered by any person who relies on any statement contained herein. The committee reserves the right to omit, reject, cut, alter or otherwise re-work submitted articles and photos to make them suitable.

Persons or organisations submitting material for publication in *The New Woodend Star* do so on the condition that *The New Woodend Star* has the right to reproduce this material in any format. The opinions expressed are not necessarily those of the editorial team, or The Rotary Club of Woodend. Submission does not guarantee publication.

This paper is a member of CNAV

Supported by Macedon Ranges Shire Council



Your community diary

**GET YOUR EVENT LISTED
ON OUR CALENDAR**

Just send the details to
content@newwoodendstar.org.au

— NOVEMBER —

- 2.....Melbourne Cup Holiday
- 3.....Kyneton Cup Holiday
- 6..... Woodend Farmers' Market & Sustainability Festival
- 9.....MRSC Webinar Compost and Ag pastures
- 11..... Remembrance Day
- 13.....Regenerative Forestry online session (MRSG)
- 13..... MRRAR Plan Sale at St Mary's Church 10am
- 12-14..... Wine Retreat at Lancemore
- 25 Int.Day for the Elimination of Violence Against Women
- 27.....MRSC Webinar Grass Identification
- 27..... Twilight Festival in Woodend from 5pm till late

— DECEMBER —

- 1.....AGM Woodend & District Heritage Society
- 4..... Woodend Farmers' Market
- 7.....MRSC Webinar Central Vic Climate
- 10..... Human Rights Day

DUE TO THE CHANGING NATURE OF THE COVID-19 PANDEMIC YOU SHOULD CHECK WITH ORGANISERS ABOUT ANY EVENTS LISTED HERE

Woodend's Rain report

September rainfall was 72.8 mm, which is a little over the long-term average of 66 mm. Year to date is 698.2 mm, so with three months to go, we are set to exceed the long-term annual rainfall of about 800 mm.

Month	2017	2018	2019	2020	2021	av 5yr
January	27.8	80.0	9.8	73.6	92.6	56.8
February	26.5	3.8	12.0	67.8	32.4	28.5
March	23.7	31.7	12.2	79.6	47.0	38.8
April	165.0	31.0	7.6	139.8	15.2	71.7
May	38.6	115.6	114.8	79.0	83.0	86.2
June	10.6	78.2	168.2	80.1	183.6	104.2
July	60.0	73.3	63.2	49.3	115.6	72.3
August	119.6	91.3	78.1	93.0	56.0	87.6
September	55.2	26.2	38.3	56.3	72.8	49.8
October	45.8	69.0	29.4	99.5		
November	77.4	55.5	64.8	54.4		
December	77.2	91.0	10.0	42.4		
Total mm	727.4	746.6	608.4	914.8	698.2	

Bringing back the pig!

A fundraising committee has been convened to replace the bronze sculpture of a pig that was stolen from the wall outside the Newham General Store back in 2019. Nicknamed Chin-Chin, the little bronze porker had graced the Newham village centre since 2010, when it was donated by local Roy Martin as part of a program of streetscape improvements conducted by the community, with the support of the Macedon Ranges Shire Council.

“We cast the pig in bronze to be a sort of mascot for the community,” Roy said. “It was intended as an historical gesture towards the bacon factory which was the centre of the village economy back in the late 1800s.”

The little pig had a prominent role to play in the village’s mammoth Pig Festival of 2014, when it was used as the template for eleven life-size fibreglass sculptures, which were decorated by well-known local artists and auctioned to raise funds for the Very Special Kids Woodend Project.

The image of the pig is widely used by community groups as a logo, appearing on a variety of merchandise such as aprons and jam labels.

Replacing Chin-Chin has required reinforcing the top of the wall to remove the likelihood of the sculpture being stolen again — as well as making the wall safer and more robust for the kids who play on it. Work has already begun on the wall, thanks to some early donations from locals and the generous stone suppliers at Castlemaine Slate in Taradale. Phillip Mune of Eclipse Bronze Art Studio has offered his support for the project, recasting the bronze at a substantial discount.



Local author Paul Carter is offering copies of his highly entertaining Country Doctor series. And there are also copies of *Hanging Rock – A History* by Chris McConville and *Echoes of the Past – A History of Newham and Cobaw*, by Jannysse Williams. 100% of sales go to Bring Back the Pig.

Fran Spain and others have been replicating some of the large pigs in a smaller plaster version, as well as pig cards and bags. These are also selling well.

In addition, the Bendigo Bank has generously donated \$5,000 to help ‘Bring back the pig’ as part of its Community Investment Program.

Readers are invited to make a contribution by purchasing something from the display at Newham General Store, or by going to the crowdfunding page (mycause.com.au/p/263342/bring-back-the-pig). Thanks to everyone who has donated so far!

SUBMITTED BY STEPHEN MITCHELL

NEW SELF-STORAGE OPENING NOVEMBER 2021 IN KYNETON

 24/7 State of the Art Security

 Clean & Modern


 Locally Owned & Operated

 FIND US



www.premiumselfstorage.com.au

 03 4411 2799

 kyneton@premiumselfstorage.com.au
6/1648 Kyneton-Metcalf Road, KYNETON



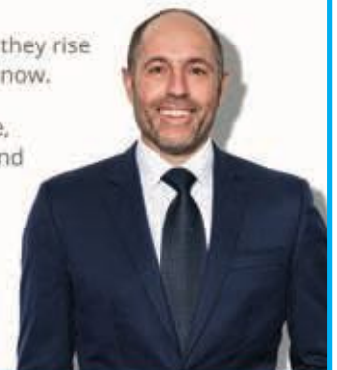
Loan Market

Make the most of low rates

Great reasons to refinance:

- ▶ Leverage equity to invest or buy another property.
- ▶ Lock in lower rates before they rise and payoff more principal now.
- ▶ Re-organise your structure, consolidate other debts, and shave years off your loan.

Matthew Farrell
Finance Broker



Make the call.

1300 766 884 or 0459 766 884
matthew.farrell@loanmarket.com.au
loanmarket.com.au/matthew-farrell

Loan Market Pty Ltd | Australian Credit Licence 310222





Talking about knowledge of local schools.

At Keatings Real Estate we have had a long and proud involvement with the establishment of education facilities in the Macedon Ranges including when we-

- Acted for St Brigid's Parish to acquire 21 acres of land for the establishment of Holy Cross Primary School in New Gisborne
- Acted for St Ambrose Parish to both acquire and sell land to facilitate the establishment of St Ambrose Parish Primary School in Woodend
- Negotiated the sale of the 831 acre Tye Estate at Kerrie to John Marsden for the establishment of the Candlebark School
- Negotiated a sale to Melbourne Grammar School of 92 acres of adjoining land to complement their Woodend campus
- Negotiated the sale of land to Braemar College for the establishment of their Romsey Road Woodend School Campus.

**Keatings Real Estate really do offer
an experience difference.**

Tutor program to continue in Macedon schools

The Victorian Government will make sure that not one school student in Macedon is left behind in the wake of the pandemic, with the state's extraordinarily successful tutor program to continue until the end of 2022.

Member for Macedon, Mary-Anne Thomas today announced that the Government would spend \$230.4 million in extending the single biggest boost to individual learning support in the state's history – allowing Victorian schools to retain the tutors that have supported students throughout 2021.

The tutor program has called on pre-service teachers, teachers on leave, retired teachers and casual relief teachers to sign up and get back in the classroom – with at least one tutor in all government schools to ensure every Victorian child comes out of the pandemic with the confidence that their learning is on track.

While the past two years have seen some students thrive with the flexibility and self-direction remote learning gave them, for others, this period has been profoundly difficult – and the tutors have worked both in the classroom and through remote learning to identify and support the students who needed extra help with their learning.

Students who struggled most during the pandemic included those with low levels of English, those already at risk of disengaging from school, or those with home environments not conducive to online learning.

The tutors have had a hugely positive impact on hundreds of thousands of students, with Victoria recording nation-leading NAPLAN results in August, and an independent evaluation by Deloitte concluding the initiative improved attendance, achievement, and engagement among students – and had a positive impact on their confidence.

Schools are responsible for employing their tutors based on the needs of their students, with tutors offering a range of expertise, experience and support to the students who need it most.

Tutors work in small groups to provide tailored support for identified students who need assistance to catch up – regardless of their circumstances or background.

The extra support for onsite tutors in 2022 will also ensure teaching teams can continue to provide dedicated and individualised support for students who need help.



Nicole Harman and Peter Machell
Mortgage Brokers



Could you
SAVE on your
Home Loan?

Talk to us today to see if you could
get a better deal!

5427 4262 87 High St, Woodend

Mortgage Choice Limited ACN 009 161 979. Australian Credit Licence 382869.

Small schools will also see their funding allocation increased from a minimum of \$15,000 to \$25,000 per school – allowing them to hire more support for their students after the challenges of 2021.

Individual schools will continue to determine how tutoring support is best implemented in their school, ensuring the program is tailored to the needs of each student – with a focus on ensuring all students have caught up on key skills in numeracy and literacy.

“There’s no question that this pandemic has been a challenge for many students, said the Minister for Education James Merlino, “... but we’re making sure no Victorian child is left behind, with thousands of dedicated tutors to make sure everyone can catch up and prepare for a much better 2022.”

SUBMITTED BY KATE LEE

JS Law
Barristers & Solicitors

*Resolving family and
criminal law matters with
respect and legal expertise*

**Family Law (parenting & property) • Criminal Law
Intervention Orders (family violence) • Wills**

2/34 Urquhart Street, Woodend (also at 72 Queen St, Bendigo) by appointment only
For an appointment, call 03 5444 1181 • admin@jslaw.com.au • www.jslaw.com.au

Liability limited by a scheme approved under Professional Standards Legislation

Woodend General



HOME GARDEN FAMILY

Find a gift for everyone!

100 High Street Woodend. ph: 5427 1695
Now Open 7 days
Monday-Saturday 9.30-5pm Sunday 10-4pm
woodendgeneral.com.au

Learning and healing through horses

It would be fair to say that the last couple of years have been tough for pretty much everyone. Many of us have experienced life and emotional stressors that we have never encountered before. Our resilience and wellbeing have been sorely tested. One area of support that more and more people are turning to is the idea of learning and healing through horses.

Equine Assisted Learning (EAL) offers physically and psychologically safe experiences with horses. EAL provides participants with the opportunity to explore issues that may be troubling them or simply to enjoy being in the space with the horses. Participants can work through a wide variety of issues, including relationship and family problems, building awareness of damaging behavioural habits, fostering interpersonal and emotional skills and working on other identified learning goals.

H.E.A.L is an experiential form of learning and healing, where participants and horses work together. “Experiential” means that participants work with the horses to experience the issues that are impacting their lives.

“Horses have an extraordinary ability to read our nonverbal communication – picking up on our feelings and the unconscious signals we may send out,” said Annie Hamer, founder of Hamer Equine Assisted Learning; H.E.A.L. “Horses do not know or care about our personal histories or backgrounds. They experience us ‘in the moment’ and will accept us as they find us. Their non-judgmental reactions provide insights to participants from which they can learn and grow,” said Annie.

If you’d like to know more about learning and healing through horses, please call Annie on 0411 549 562, or visit www.hamerequineassistedlearning.com.

SUBMITTED BY MIKE HAMER

MRFL
Macedon Ranges
Family Law



Whole of life clarity

The decisions you make today will shape the story you tell tomorrow.

- Wills & Estates
- Probate
- Deceased Estate
- Power Of Attorney
- Divorce
- Child Arrangements
- Child Support
- Asset Division
- Family Violence
- Intervention Orders

Phone: **03 5428 8711**
Level 1, 45 Hamilton Street, Gisborne
www.mrfl.com.au



Annie with Halo, Jenny, and Blaze



Hamer
Equine
Assisted
Learning

LEARNING AND HEALING THROUGH HORSES

WHAT IS EQUINE ASSISTED LEARNING (EAL) ?

EAL is an innovative form of experiential learning which assists in the development of personal insights and skills via relational experiences with horses.

What are some of the benefits of EAL?

- Fostering interpersonal and emotional skills
- Building awareness of damaging behavioural habits
- Addressing relationships or family issues
- Building confidence and self esteem
- Meaningful connections

Who is suitable for EAL ?

- Individuals of all ages including children
- Families
- Small teams or groups (max 12 people)

What does an EAL session look like?

- Meeting the herd
- What horses can teach us
- Experiences with the horses - including touching, grooming and leading
- Creative activities with the horses

Please note there is no riding involved and no horse experience is required

H.E.A.L is located 10 minutes outside of Woodend and 1 hour from the Melbourne CBD.



Annie Hamer
☎ 0411 549 562

📧 annie@hamerequine.com
www.hamerequineassistedlearning.com



LOUISE MOORE FITNESS

HELPING LOCALS GET ACTIVE, STAY ACTIVE... AND LOVE EVERY MINUTE OF IT!

The struggle to find an approachable and sustainable exercise routine is real! It can be hard to know where to start! That's exactly why Louise Moore launched her Woodend based fitness services just over 12 months ago.

Having experienced the same barriers many of us face - a hectic home/work schedule, past injuries, long periods of inactivity - Lou has dedicated her focus to creating an exercise program that is both approachable for all fitness levels and able to be fit into even the busiest of schedules!

The ace up her sleeve? **High-Intensity Circuit Training (HICT)** - now, don't be scared by the High-Intensity part - the beauty of HICT is in the flexibility to go at your own pace and adapt each exercise to YOUR fitness level! (from beginner to advanced) Lou is a master at working the room, tailoring each exercise to suit each student, and creating the most encouraging environment imaginable! Classes run in Woodend weekly (outside in the summer months, inside in bad weather) and the vibe is friendly and supportive (with a few laughs for good measure!).

There's no question in our mind... if you're ready to up your fitness game Louise is the lady you need to speak to!

LOUISEMOORE.COM.AU



Images by KGMG Creative



Simone Platt Design



The Gardener's Path



Mount Macedon Winery



Chris Roy Taylor



Louise Moore Fitness



Kuzu Izakaya



Fox in the Chamber



Anushka Chai



Mort & Pestle



Woodend Ice Cream Co.

TCC REAL ESTATE A REAL ESTATE AGENCY MAKING A REAL DIFFERENCE IN THE COMMUNITY!

When you consider businesses that truly look after locals, you'd be forgiven for momentarily skipping over the real estate sector. However, if you take a quick glance at what the TCC team does on the daily, it's clear that you'd be hard-pressed finding an element of their agency that doesn't benefit the community!

Beyond simply matching buyers and vendors who have a clear passion for living in this beautiful region, directors Pete + Elona have worked tirelessly to build a boutique agency that focuses solely on supporting residents of the Macedon Ranges.

Their staff: all locals, with opportunities given to new trainees wherever possible - Their contractors: Almost exclusively based in the 'Ranges - They're also active sponsors of several sporting clubs across the region. In short, the TCC team are blazing a trail and they're bringing the community with them!

TCCREALESTATE.COM.AU



DIGITAL MARKETING, WEBSITES, SOCIAL MEDIA & CREATIVE CONTENT

WWW.KGMG.COM.AU



f @KGMGCREATIVE

PROUDLY SUPPORTING THE MACEDON RANGES COMMUNITY

Happy 10th birthday, Woodend Wine Store

Wander the bustling streets of Woodend, and you will find the much-beloved local Wine Store. Once you've browsed the selection, you are likely to come away with a bottle of wine and a few beers you have only ever read about. Not to mention a piece of delicious French cheese, whose white gooey centre will melt all over the afternoon nibbles board and a local gin you saw once at the farmer's market.

The Woodend Wine Store was opened by Caroline Bailey in 2011. Caz (as most know her by) came to Woodend in 2008 and worked at Hanging Rock Winery while completing her Wine Science degree. She soon discovered the calibre of our local wines and saw an opportunity to showcase our regional wines alongside other boutique Australian wines, and so the Woodend Wine Store began.

As the business grew, it only got better with time like all fine wines, and many fun-filled, memorable events were held. The heartbeat of these events has always been the winemakers and wine professionals, whose ongoing support is still gratefully received and never forgotten.

The business expanded in 2017 with the opening of the Cravat Club. It served an array of excellent wines by the glass, delicious cocktails and cheese plates. The local community embraced the elegant new bar. Sadly, this part of the business was hit by the impact of Covid and had to close last year. However, the Wine Store remains as strong and busy as ever.

Caz would like to thank the many wonderful staff who have worked in the store over the past decade. Naturally, the business wouldn't be what it is without her amazing customers, many of whom Caz now calls friends. She looks forward to continuing to support the local clubs and schools in the coming months as lockdowns ease.

To celebrate ten years in business, Caz is hosting an immersive, luxury two-night wine retreat (see website for details), along with in-store celebrations, including giveaways and specials throughout November.

SUBMITTED BY ZALI FROM BESPOKE MARKETING CO.



Macedon Ranges Digital

Is your business based in the Macedon Ranges?

Get a custom responsive website and enhance your online presence.

We are your local one-stop shop for online retail stores, SEO optimised sites and we even manage hosting.

Fast track your business today with a website that works hard for you!



Macedon Ranges Digital

WE'RE LOCALS, JUST LIKE YOU | GROW YOUR BUSINESS | YOUR DIGITAL PARTNER

Call us today on 1300 314 280 or visit macedonrangesdigital.com.au



Contact Vlad 0400 563 563
E: info@storagewoodend.com.au
22 Wood Street

SECURE SELF STORAGE UNITS

FAIRHURST CONVEYANCING

for all your Property Transfers
contact Sue Fairhurst
5427 2382 | reception@fairhurst.com.au
27 Urquhart Street, Woodend

Venturers hit the slopes again!

After missing out on their annual ski trip due to Covid last year, the Venturers of Macedon-Woodend Scout Group were excited to carve up the white powder at Falls Creek during the first week of the school holidays. Being the first ones on the slopes each day and skiing full days, we made the most of ideal conditions. There was plenty of fresh snow and some great spills as some Venturers hit the snow for the first time. With Melbourne still in lockdown, we virtually had the mountain to ourselves. Macedon-Woodend Venturers are looking forward to our planned visits in the next holidays to the Wilderness Coast Walk at Mallacoota in December, and the Overland Track in Tasmania in January.

Macedon-Woodend Scout Group is based at 118 Railway Place Macedon, and has Cubs and Scouts on Mondays, Scouts on Tuesdays and Venturers on Thursdays. Visit www.macedonwoodendscouts.com for more information.

SUBMITTED BY DALE SUTTON - VENTURER LEADER



Rotallieo
Support • Advice • Solution

Individual Tax Returns
Bookkeeping
Business Returns and Advice
Self Managed Superannuation

We can help you with all of your accounting and compliance needs



Address: "The Bank" Office 9 75 High Street Woodend, Vic 3442
Email: info@rotallieo.com.au | Website: www.rotallieo.com.au

Phone: 0418 542 484

Pictured below: Lachlan James, Noah Camilleri-Seeber,
Lachlan Sutton, Bailey Thorne, William Shaddock,
Edward Pearce, and Reece Bateman after a
great day skiing at Falls Creek.



Support still needed to address homelessness

Rotary Clubs across the region, including the Rotary Club of Woodend have joined forces to address homelessness – a growing social concern created by lack of affordable rental accommodation and safe housing in our area.

While they have had some wonderful responses to last month’s article, more is needed, especially in terms of affordable accommodation.

The group, which includes the Rotary Clubs of Woodend, Gisborne, Kyneton, Macedon Ranges and Daylesford, is called ‘Rotary in Support of Empowerment’ or RISE and are pleased to have Robert Pradolin, founder of Housing all Australians (HAA) and many local organisations working alongside of us.

As its first objective, RISE is looking for local spaces or buildings, private or commercial that are vacant and that can be leased and refurbished by volunteers to provide short term or ‘pop up’ accommodation for homeless women.

For RISE, affordable short to medium term accommodation is the first step in a plan that needs to include long term solutions for social and affordable housing.

How can you help?

If you know of any buildings or have spaces on your property that are not currently being used, or would like further information on this project, please call Josephine on 0407 271 628.

SUBMITTED BY THE ROTARY CLUBS OF MACEDON RANGES

BREAZE ENERGY SOLUTIONS

SOLAR

\$1,888 REBATE

As one of a limited number of Clean Energy Council (CEC) Approved Solar Retailers, we can claim the Solar Victoria Rebate for you

Local Consultants & Accredited Installers live
Macedon, Moorabool & Hepburn Shires
On-Grid, Off-Grid, Domestic & Commercial Projects
Expertise in Solar Power, Batteries & Hot Water

Contact your Local Consultant Karl Haller directly via 0435513572 karlhaller@breaze.org.au ...

03 4309 4027 www.breaze.org.au/pv
energysolutions@breaze.org.au

woodend hydronic heating & cooling

Refrigerated Cooling

- Wall hung split systems
- Cassette units
- Ducted units
- Bulkhead hideaway units

Hydronic Heating

- Radiator panels
- Heated towel rails
- Slab heating
- Trench element
- Wood fired boilers

Specialising in new builds & existing homes

Stylish, clean, silent energy efficient heating

Locally based & servicing the surrounding areas

For more information contact:
Chris Short
m: 0400 774 302 email: info@woodendhydronicheating.com.au

WOODEND HANGING ROCK PÉTANQUE CLUB

THURSDAY EVENINGS - 5 PM - OCTOBER TILL APRIL
NO EXPERIENCE REQUIRED - TUITION GIVEN
ALL AGES WELCOME
MAKE NEW FRIENDS
BBQ AND BYO

www.petanqueattherock.com.au

Holistic Funeral Directors

naturalgrace®

Call **5427 3112** or visit **NaturalGrace.com.au**

MACEDON RANGES SUSTAINABILITY GROUP
INVITES YOU TO

**WOODEND
COMMUNITY
FARMERS
MARKET**

FIRST SATURDAY OF EVERY MONTH
9 AM TO 1 PM

Buy fresh local
produce straight
from over 70 farmers
and producers



CNR FOREST & HIGH ST
WOODEND

MRSG.ORG.AU/FARMERS-MARKETS

Mini Sustainable Living Festival

Celebrating 10 years of the Farmers' Market

The Macedon Ranges Sustainability Group is celebrating the tenth anniversary of its highly successful Farmers' Market and Veg Action group with a mini-Sustainable Living Festival on Saturday 6 November, 10am–1pm, at the Woodend Community Farmers Market, corner of Forest and High Streets, Woodend. Many of MRSG's 14 action groups and Woodend Landcare will have stalls at this market, and you can find out how you can get more involved in making the Macedon Ranges a more sustainable place to live.

SUBMITTED BY DAVID GORMLEY-O'BRIEN

Seeing Forestry as a Solution

The Macedon Ranges Sustainability Group is pleased to announce a public presentation on the potential benefits of regenerative forestry in the Macedon Ranges by Ben Boxshall. Through regenerative forestry, we can generate a perpetual source of renewable materials for firewood and construction, energy, and jobs, as well as playing a vital role in regulating and protecting land, water, biodiversity, and mitigating against climate change. There will be a Q&A session after Ben's presentation, where you can ask questions about using your property for carbon sequestration, perpetual firewood harvesting etc.

Ben Boxshall is co-founder and director of Wood4Good (www.wood4good.com.au) and has decades of experience designing and managing regenerative forestry projects in Australia.

Ben's presentation is open to the public. Saturday 13th November 2021, from 3.00–3.45pm. Online and free.

Register via mrsg.org.au

SUBMITTED BY DAVID GORMLEY-O'BRIEN



FORESTRY AS A SOLUTION

**Ben
Boxshall**

How can regenerative forestry practices make efficient use of natural resources to diversify and protect landscapes and ecosystems, while providing a perpetual source of renewable materials and energy, in the Macedon Ranges.

Join us for an online presentation by Ben Boxshall of Wood4Good.

Saturday 13 November 3pm - 3:45pm

To be followed by MRSG Annual General Meeting

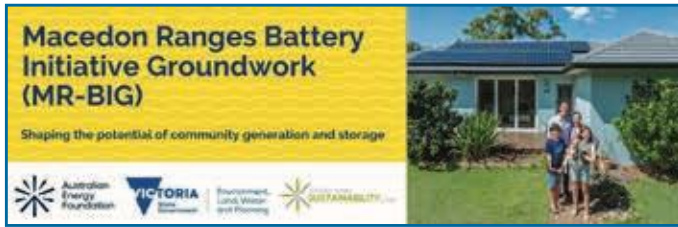


macedon ranges
SUSTAINABILITYgroup

Bookings via:
MRSG.ORG.AU



Local flora photo by Hubert Weisrock



Macedon Ranges Shire Council recognised for sustainability leadership

Victorians leading the way in sustainability have been recognised in the 2021 Premier's Sustainability Awards, with the Macedon Ranges Shire Council announced as a finalist in the Healthy Environment category for their project 'Healthy Landscapes for Healthy Livestock'.



Member for Macedon, Mary-Anne Thomas, congratulated the council for joining an impressive list of 35 finalists, which includes organisations implementing innovative renewable energy technologies, and community groups producing films on local wildlife and bringing people together through sustainability initiatives.

"I am delighted that the Macedon Ranges Shire Council has been recognised for their achievement and the contribution they are making to advance our shared goal of a more sustainable future," said Ms Thomas. Now in its 19th year, the Premier's Sustainability Awards are Victoria's most recognised annual sustainability awards program.

The Awards recognise and reward individuals, businesses, government and community groups across metropolitan and regional Victoria who are leading the way to a circular climate resilient economy through sustainable innovation and practices.

Comprising six categories, there are two awards within each category: the Community Champion Award – for individuals and small organisations; and the Industry Leader Award -- for medium and large organisations.

Two winners will be chosen from this year's finalists to receive the Premier's Recognition Award and Premier's Regional Recognition Award, which acknowledge entries that showcase exemplary innovation in sustainability and demonstrate notable benefits for metropolitan and regional Victoria.

Winners will be announced at an online event in November. For profiles of this year's finalists and more information on the Awards, visit www.sustainability.vic.gov.au/psa

SUBMITTED BY KATE LEE

Find out about MR BIG at the Sustainable Living Festival

As the federal Minister for Resources recently said, "Find me a solar panel that works in the dark". Well, Mr Pitt, that is called a battery, and batteries can play a big part in allowing more solar onto the networks, as well as provide a host of other benefits that help to reduce carbon emissions and electricity prices across the community.

The MR-BIG project, funded by the MRSO and the Victorian Government Neighbourhood Battery Initiative program, has recently kicked off and is investigating whether putting a community battery into the Macedon Ranges will provide these and potentially other benefits. It will also look at network issues and potential locations for a community battery.

The first part of this project will be to gather feedback from the community on many of the issues related to community battery, such as electricity network constraints, issues with reliability as well as to explore potential models for funding and ownership that will allow people across the shire to benefit, whether they have solar or not.

We are just getting started, but if you are interested in finding out more or letting us know your thoughts about the battery, drop into the Renewable Energy Action Group stall at the Sustainable Living Festival at the Woodend Farmers' Market on Saturday 6th November for a chat. If you can't make it you can find more info at <https://mrsg.org.au/neighbourhood-battery-initiative> for more information or email battery-info@mrsg.org.au.

SUBMITTED BY PETER MCTAGGART

WANTED

Farm/grazing land to lease

Located within the Macedon Ranges
Regenerative practices will be used for livestock
No fencing necessary

Matt - 0403297737

For All Your Dog Walking and Pet Sitting Needs

www.woofwalker.net.au



The Woodend
Woof Walker

Call Chris 0431 533 509



Endangered

Specialising in Australian Made Homewares, Clothing and Giftware

Time to buy your Christmas gifts for posting overseas!

We have lots of suitable gifts all made in Australia.



Jozzies

If buying Australian Made and Owned is important to you visit **ENDANGERED @** 97 High Street, Woodend endangeredausmade.com.au | 5427 1198




SHIRE NEWS

Message from our councillors

Our Shire has been one of the leading Councils in attaining high vaccination rates, which is a great achievement. Our thanks to everyone, and we are all looking forward to opening further, as we head towards Christmas.

Council staff continue to work with and support community groups and local businesses in following the State Government health directives. Council is also complying with the relevant health directives impacting our operations. We also recognise that some local events have been cancelled or postponed as a result of the current crisis and appreciate that whilst some of those events have been able to pivot and be delivered in parts or on-line, this is not an option for others, and we look forward to these events being held next year.

At the October Scheduled Council Meeting, the Community Vision, Council Plan, Municipal Public Health and Wellbeing Plan, Disability Action Plan and the first ten-year Financial Plan will be on the agenda. Thank you to all those people that made submissions and took the opportunity to present to Councillors at the Submitters Committee Meeting.

We know there have been many documents and strategies out for community feedback over the last six months. We understand that it is a large load and too much to respond to them all, however there is a large

variety of areas whether it be the Environment Strategy, the Rural Land Use Strategy, the recent Domestic Animal Management Plan or different Masterplans that may be of particular interest to different people. Please keep an eye on the Have Your Say page on Council's website and also our Facebook page.

<https://www.mrsc.vic.gov.au/About-Council/News/Have-Your-Say>

Councillors and Executive meet every Tuesday for briefings, which include presentations from different directorates, work

Read us online:
www.newwoodendstar.com/view



YOUR Goodbye
Honouring life

TJ SCOTT & SON
FUNERAL DIRECTORS

IN THE END, HOW WILL THEY KNOW YOUR WISHES?
Your Goodbye matters.

For a printed version of the **Your Goodbye and Your Story** booklets call our Kyneton Office on 03 5422 6455.

www.tjscottandson.com.au

on strategies and plans, legislated requirements and planning matters, amongst others. There are also presentations and discussions with different authorities, external groups and community members.

A record of the meetings of Councillors and Council staff is listed each month and recorded officially at the monthly Scheduled Council Meeting. It includes who was present and what items were discussed and can be found on our website for anyone who is interested to view this.

At the Council Meeting in October, the Environment Strategy and the Annual Environment Report will be tabled to be endorsed. They provide a lot of information, and we know this is of interest to many residents. As mentioned, there is a lot of work being done to develop an affordable housing policy and our thanks to staff who are working hard on this to accommodate timelines for funding opportunities.

The Delegated Planning Committee meetings were introduced in July and are held on the second Wednesday of the month; they have been working well. At times, some planning matters may still need to come to Scheduled Council Meetings for a decision. We look forward to the time that we can welcome community back into the Council chamber, but both meetings are live streamed, recorded and on Council's website to be viewed at any point.



We understand that some people are still facing challenges from the storm damage. Council continues to work with Bushfire Recovery Victoria, and there is a lot of information on our website. The community recovery drop-in sessions needed to be held online in October. Council can also be contacted on 5432 0237 <https://www.mrsc.vic.gov.au/About-Council/News/News/Storm-Recovery>

As always, as summer approaches, we look towards maintenance, preparing properties and areas with fire prevention in mind. A reminder that green waste disposal is free at Council's transfer stations. Council also sends out written reminders to properties that have been assessed as requiring immediate action to address any risks. The CFA also provides important information on this.

We look forward to being able to get out and see more of you in person leading in to Christmas.

Best wishes,

Cr Janet Pearce 0437 282 096

Cr Jennifer Anderson 0408 273 670

Cr Mark Ridgeway 0437 938 766



KEEN TO GET THINGS DONE AND OVER WAITING FOR TRADES TO TURN UP?

A COVID SAFE EXPERIENCE

Dear Home Owner,
IF YOU'VE BEEN THINKING ABOUT:

- Additional powerpoints
- Improving your network for working from home
- Saving money with Solar
- Keeping cool with a new split system

... THEN THIS IS YOUR IDEAL CHANCE TO GET THESE THINGS OFF YOUR WISH LIST AND INTO YOUR HOME!

"Extremely happy with the service the Bluegum Electrical Team provide, they are always on time, reliable and a pleasure to deal with. Highly recommend."

Sue, Woodend

WE PROMISE TO SAVE YOU TIME WITH:

- Fixed price quotes** no surprises
- Set booking times** on-time arrival with courtesy calls
- Spotless service** we leave no trace or your house will be cleaned on us

BECAUSE YOU ARE IN WOODEND YOU CAN SAVE \$55 ON A CALL OUT FEE WHEN YOU BOOK THIS MONTH.

Call 1300 306 342 to SAVE \$55 right now.

bluegumelectricalsolutions.com.au

Annual CWA Christmas Lights Competition

Ok, we admit it, we're a bit excited. The fruit mince pies are already making an appearance in Coles which can only mean...

The CWA Woodend Christmas Lights competition is back! Dust off the decorations, untangle the lights and get ready for some (not so) serious competition!

Decorate your house, front fence, mailbox or your wheelie bin, we really don't mind.

Since last year was such fun, we're hoping to make this year's competition bigger and better, so we'd love for you to get involved.

Full details will be posted on our social media and around town, so keep your eyes peeled for that, but the principles will remain the same: \$5 per entry and the more creative your lights and decorations, the better your chance of winning! Let's get together and make Woodend sparkle this festive season!

As always, you can keep in touch by following us on Facebook and Instagram, sending us an email at cwawoodendeves@gmail.com or just come along to one of our meetings (COVID restrictions permitting). We'd love to meet you. Third Tuesday of the Month, 7pm, Neighbourhood House.

SUBMITTED BY SUZIE WYATT

ADVERTISEMENT

AS YOUR FEDERAL MEMBER I CAN:

- Assist with access to Federal Government Departments and agencies
- Advise on current Government funding programs, including grants
- Arrange congratulatory messages for significant wedding anniversaries and birthdays



Federal Member for Bendigo

LISA CHESTERS MP

PO Box 338 Bendigo 3552,
Cnr Williamson & Myers Sts, Bendigo
P: 03 5443 9055 • F: 03 5443 9736
E: lisa.chesters.mp@aph.gov.au

@LMchesters • /LisaChestersBendigo

www.lisachesters.org

Authorised by Lisa Chesters, ALP, 16 Myers St, Bendigo



THINK ALIKE

A curated selection of unique pieces for the modern woman at any stage of her life. Discover apparel, homewares, accessories and jewellery that is creative, carefully thought out and artfully produced.

BLACK BLAZE búl SISTER
 ARTHUR WILDHORSES kowtow
 BLAZED WAX mu se. Lashqzal

Plus so many more!

Visit us in store

Shop 2, 130 High Street, Woodend

or online

thinkalikestore.com

OW OPEN NOW OPEN NOW OPEN NOW OPEN NO



You can now find us on-line at

www.pestle.com.au

4/130 High St
Woodend

5427 4500
Call us if you need something specific and we can deliver to your door.



Landscape design | Paving
Decking | Pergolas
Retaining walls | Water features
Irrigation | Real & artificial turf
Planting | Excavator wet hire
and much more

Contact Adam for a FREE quote 0424 033 087

aghent@hotmail.com

www.aghentlandscapes.com

Woodend Traders Lighting up High Street!

Put **Saturday 27 November** into your diaries, because the Woodend Twilight Festival will be a feast of entertainment, good food, lots of laughs and awesome shopping.

Bringing us all together in 2021, Woodend Traders Inc. are planning a festival to celebrate all that is wonderful about Woodend. Roaming street performers and a spectacular light show will delight friends, family, locals and visitors! You'll grab dinner or a snack from one of our local eateries or a food truck and wander the High Street to soak up the atmosphere. Traders will leave their doors open until late and welcome you to browse, shop or just come in for a chat.

The light show, scheduled for just on dark will feature artworks lovingly created by students from our local schools and will be beamed onto buildings in High Street for everyone to enjoy.

The huge and multi-coloured Community Christmas Tree will be unveiled at the start of the evening. This year's tree will again feature hand-crocheted squares painstakingly sewn together to create a vivid reminder of everything great about the holiday season. Last year's tree proved to be a drawcard for locals and visitors alike and became a focal point for selfies that when posted on social media, reached a huge audience, putting Woodend well and truly on the map.

Last year's festival was a massive success and the perfect antidote to the struggles of 2020. Let's band together and send 2021 on its way in style, all the while supporting our local businesses.

SUBMITTED BY NIKKI BAKER



Twilight Festival in Woodend

Saturday 27 November 2021

From 5pm 'til Late

- Spectacular LIGHTSHOW
- Street ENTERTAINERS
- Twilight SHOPPING
- Food TRUCKS
- Street DINING




Pamper yourself or someone special with a 3 course gift voucher at Ramai this Christmas!

Simply choose **one treatment** from each of our entree, main and dessert to customise your own package!

ENTREE

- Eyelash Tint
- Eyebrow Wax
- Eyebrow Tint

MAIN

- 30 min Organicspa Facial
- File, Polish Shellac Toes
- 30 min massage

DESSERT

- Foot Massage
- Hand Massage
- Head Massage
- Add on AHA peel (only with facial)

All of this for only **\$99!**

*gift vouchers can also be purchased to a specific value or treatment



0438 062 143
www.ramai.com.au
2C Dickens Street, WOODEND

More support for student mental health and wellbeing

Schools in the state district of Macedon will be able to pick the mental health tools that best match the needs of their students, with the Victorian Government's Schools Mental Health Fund providing a suite of options to give students tailored support.

Member for Macedon, Mary-Anne Thomas today revealed the interim menu of resources and initiatives to be available to government schools in Macedon, as part of the \$200 million fund, designed to better support students' mental health.

Schools will be able to select evidence-based programs and initiatives from the online menu across three tiers of intervention:

- Tier One: positive mental health promotion, including initiatives like Active Schools, mental health first aid, anti-bullying programs and therapy dogs as whole-school investments to help create a positive, inclusive environment, as well as mental health literacy training, to ensure mental health issues are addressed early
- Tier Two: early intervention and cohort-specific initiatives, including cross-cultural responsiveness training, arts therapy or trauma informed care, ensuring programs cater to all students
- Tier Three: targeted support for those experiencing mental health issues, such as additional mental health professionals, additional Headspace counselling, or suicide-related support

As per the recommendations of the Royal Commission into Victoria's Mental Health System, the fund will be implemented in all government schools across regional Victoria from mid-2022 and will be in every state school by 2024.

This comes on top of the Government's completed rollout of a mental health practitioner in every government secondary school. Further, an additional 74 primary schools across Victoria will join the Mental Health in Primary Schools pilot in 2022 – bringing the total number of schools in the pilot to 100.

A partnership with the Murdoch Children's Research Institute, the Mental Health in Primary Schools pilot provides schools with funding for a Mental Health and Wellbeing Lead to implement a whole-school approach to mental health and wellbeing aimed at younger children.

Work to reform the state's mental health services is well underway, with a record \$3.8 billion allocated in the Victorian Budget 2021/22 to deliver every single recommendation of the Royal Commission and to build a system that works for every Victorian.

"These important initiatives will help ensure our local kids ... can get the mental health support they need, whenever they need it. With these initiatives in place, students can focus on learning and have the best opportunity to succeed at school and in life."

To access the menu, visit <https://www.education.vic.gov.au/mental-health-menu-for-schools>

SUBMITTED BY KATE LEE



**WOODEND NURSERY
& GARDEN SUPPLIES**

Indoor & outdoor plants
Giftware • Plant hire
Landscaping

0400 939 656
36 Urquhart St, Woodend
cassius@woodendnursery.com.au

Woodend Nursery

So, spring is in full bloom! Yes, you can finally plant your tomatoes, cucumber, eggplant, chillies and basil! Given that our climate is sooooooo cold, perhaps consider planting tomatoes like Siberian or Cherry tomatoes. Why? Because most tomatoes take 12–14 weeks to ripen, while Siberian ripen in 8–10 weeks and cherry tomatoes in 50–65 days! Given the unique Macedon Ranges climate, we need to squeeze our tomato growing into as quick a growing time as possible to actually get tomatoes. Speak to our team about what vegetables, soil and vegetable food to choose to maximise your yield. Spring is such a great time to be in the garden. To book your face-to-face consult, please call the nursery on 0400 939 656, and one of our friendly team will get back to you. Whether it's improving your lawn, putting in a new lawn, a new planting design, landscaping, spotscaping or advice; the Woodend Nursery & Landscape team is ready to help.

Jahne Hope-Williams
Tarot therapist/Reader/Author Artist

www.ccpproject.com



DEATH DOULA TRAINING AND THE COMPASSIONATE COMPANIONS PROJECT

I initiated this course (now by distance and Zoom) when I realised a number of my students, and those in our wider community, were having trouble dealing with the approaching death, or actual death of a loved one, or were anxious and depressed due to the Covid situation. Having lost children, and sat with relatives and friends at their end, I come from a place where I do understand, and can teach my students from this place.

This is not a counselling course – we stand in for the missing extended family. We are the quiet companions; someone to be there when you have no one. Our graduates are not only the “compassionate companions”, they can organise memorial celebrations for clients of any age. They can also perform memorial ceremonies for those who have passed un mourned – no matter how long ago. They midwife clients into a healing journey.

If this work appeals to you, please go to www.ccpproject.com for dates of information sessions on Zoom, or talk to Jahne our director, at yogafirst@netcon.net.au.

STUDIO AND ZOOM: address everyday issues, career, relationships and wellbeing email: yogafirst@netcon.net.au

Looking Forward to finally re-opening our Doors!




Hard to believe it's November, and sadly our doors are still closed. The future is definitely looking brighter though, with easing of restrictions and lockdowns ending.

Our Youth Theatre is back on track to perform their end of year production in December, and we are happy and excited to announce that our season of Love Song has now been rescheduled for February, 2022. After it was postponed twice already, we are now feeling confident that this lovely play will finally be staged and tickets on sale very soon.

The committee aims to provide the safest environment possible for everyone attending our shows, and we invite you to check out our website www.themountplayers.com for all up to date Covid safe requirements as they come to hand.

The Mount Players Youth Theatre (MPYT) is a vibrant community theatre program designed for children and young adults aged from 10 to 19 years old and is run entirely by volunteers. The MPYT provides opportunities for young participants to learn a wide range of theatrical skills. With many of the current, long-standing leadership group indicating their unavailability to be involved next year due to other commitments, The Mount Players is now seeking interest from enthusiastic, experienced volunteers for 2022. If you would like to know more, please call Karlana on 0412 131 260.

SUBMITTED BY KAREN HUNT



**Woodend
SAND & SOIL**

For all your garden needs and equipment hire.

Sand, Soil, Mulch, Rocks,
Bags of Cement, Rapid Set, Lime,
Concrete Mix, Reo Mesh, Trench Mesh,
Reo Bar, Steel Garden Edging, Irrigation
Fittings and pipe, Equipment Hire Kanga,
Excavators, Trailers

FREE DELIVERY IN WOODEND

Open 7 days a Week

**37 Bowen Street Woodend
Ph: 5417 6240**

2468592-0435-20



PALMER, STEVENS & RENNICK
Barristers & Solicitors

- Property and Conveyancing • Criminal Law
- Family Law • Wills and Estates • Commercial Law
- Employment Law • Appearing in all Courts

Please contact us on 5422 6500
8 Jennings St, Kyneton email: psr@psr.net.au

Library News

The Women's Prize for Fiction UK



Susanna Clarke's *Piranesi* was recently announced as the 2021 winner of the United Kingdom's Women's Prize for Fiction. The prize is awarded annually to a female author of any nationality for the best original full-length novel written in English and published in the United Kingdom in the preceding year. Other shortlist entries included Patricia Lockwood's *No One Is Talking About This*, which was also shortlisted for the Booker Prize.



You can reserve these books through our catalogue www.ncgrl.vic.gov.au

Online Author Event – Wednesday 10 November, 6-7pm

Join bestselling Australian author Monica McInerney for an enjoyable and lively chat as she reflects on the writing of her 13 books. In conversation with Kristin Gill from Northern Books, Monica will talk about her latest novel, *The Godmothers*, her Castlemaine-based novel, *At Home with the Templetons*, and her very first children's book *Marcie Gill and the Caravan Park Cat* – due out in November. She will also share stories and insights about the ups and downs of her writing life, with plenty of time for questions.



This session will be run using Zoom. See booking and event information here: www.goldfieldslibraries.com, or give us a call on 5427 2074.

Watching and Listening Online – Thursday 18 November, 10am

Woodend Library will run a BeConnected IT help session in the Library over spring, to help people who are new to watching movies or TV shows or listening to the radio online. Starting from the very basics, we'll show you how to find and use services like ABC iView and more. Sessions are free!

See booking and event information here: www.goldfieldslibraries.com, or give us a call on 5427 2074. This session may be online or in-person in the Woodend Library if restrictions allow. Please check at the time of booking and closer to the date of the session.

More Magazines More Often

A Goldfields Libraries membership gives you access to a wide range of Australian and international magazines in print, on your smartphone or on your computer. As well as the titles you can find browsing the shelves in the Woodend Library, we can also bring in titles from other Goldfields branches.

Our selection includes big name Australian magazines such as *Delicious*, *Gardening Australia* and *Country Style*, as well as international offerings such as *Country Life* (UK), *New Zealand Gardener* and *New Scientist*.

And for an even wider range, you can use our Libby app on your smartphone or computer, gaining instant access to hundreds of magazines, including a large selection of overseas titles, many in languages other than English.

To find out more visit us in person or head to ncgrl.vic.gov.au/elibrarynewspapersmagazines.



Vaccination Records on Medicare & MyGov

Need to print out your vaccination status, or access MyGov & Medicare online? Anyone can use our public access computers (no library membership required!) and printing costs just 20c for a normal black and white page.

Our friendly librarians are always happy to help out with quick questions, or, if this is your first time using MyGov and Medicare online, we'll be happy to book you in for an extended one-to-one IT help session. For more information, please phone us on 5427 2074.

See you in the Library!

SUBMITTED BY WOODEND LIBRARY



PETE'S GARDENING & MAINTENANCE

- ✓ MOWING
- ✓ WEED CONTROL
- ✓ GUTTERS
- ✓ PRUNING
- ✓ CLEAN UPS

0438 488 776

Supporting local families in need this Christmas through local businesses

Community organisations Kyneton Baptist, Sunbury Cobaw Community Health and the MRSC are once more partnering to support local families in need at Christmas, having served the needs of families here in Macedon Ranges at Christmas time for twelve years.

As a continued response to the challenges of Covid-19, we are again running our gift card program. By offering gift cards to local businesses right here in the Macedon Ranges, we are supporting not only local families in need, but our local economy at the same time. This model empowers local businesses to support local families, and we are seeking your financial donations to make this possible.

Families will receive Macedon Ranges Gift Shop Gift Cards, with a set amount for each child. Gift Cards can be redeemed at participating local business partners. We hope to have as many businesses on board as possible, offering as many products and services as possible.

The amount of gift cards and assistance we can provide per child will depend solely on the amount of financial donations we are able to raise. For 2021 we have a target to raise \$15,000!

If you are a local Macedon Ranges business interested in partnering in our Gift Card system for your store, we'd love to speak further and partner with you. Donations can be made by direct deposit, cash, cheque and online. Find us on Facebook for more details, or contact Georgina Harvey, Macedon Ranges Gift Shop Coordinator on 0404 442 891.

SUBMITTED BY GEORGINA HARVEY



Community Bank · Trentham & Districts

Happy to be a support act

When you choose to bank with Bendigo Bank, good things happen in your community. Feel good about who you bank with.



Since the branch's establishment back in 2011, sponsorships and grants to the local and surrounding community have exceeded \$250,000.

So, who have we supported?

Woodend Hesket Football Club, 2021 Scholarship winner Jade Gledhill, Woodend Golf Club, Woodend Toy Library, Macedon Ranges Sustainable Living Festival, Tylden CFA, Tylden Primary School, Tylden Hall and the Young Trades Awards, with local Carpenter, Rupert Miranda winning the Qualified Tradesperson Award.

Let's get inspired - what Community Ventures can we build together to make them a reality?

Call your local Community Bank **5424 1608**

MRRAR Plant Sale

Spring has sprung, and Macedon Ranges Rural Australians for Refugees is celebrating the season of plenty, with a sale of quality garden plants. A wide range of annuals, perennials, herbs and vegetables will be available for purchase – including advanced heirloom tomatoes. If possible, please help us keep the event environmentally friendly by bringing your own box or tray.

Also featured on the day will be a sausage sizzle, musical entertainment, and face-painting for the kids. All funds raised will be donated for the support of refugees in Australia. Hope to see you there.

Where: St Mary's Anglican Church, 15 Buckland Street, Woodend

When: 10am to 3pm, Saturday 13 November.

SUBMITTED BY: ANDREW GRIMES




DOUBLE UP GLAZING & WINDOWS

INSTALLATION OF DOUBLE
GLAZING INTO EXISTING
TIMBER WINDOWS

RETROFIT ALUMINIUM
WINDOWS & DOORS

MACEDON RANGES
AND SURROUNDS

CALL FOR A FREE
APPRAISAL & QUOTE

0418 319 298

Trentham and Districts Life Activities Club Inc.

Make the most of any spare time you may have by joining Trentham and Districts Life Activities Club Inc. The club offers varied and interesting activities, suitable for all interests.

Your social circle will be widened, you will be exercising your body and mind, and learning new skills. Membership is very affordable, \$25.00 per year, which includes Insurance.

You will receive a monthly newsletter, which keeps you informed on all things Life Activities.

Activity groups always welcome new members. Scrabble and cards groups are especially looking for new participants.

If you're interested in either of these, or any of the other regular activities, be in touch with the president and activity coordinator, Di Clausen on 0425 008 763, or secretary, Gaye Lovelock on 0411 150 114.

SUBMITTED BY WENDY REDMAN



**OPEN DAILY
from 7am**

5427 2486

Shop 1-3 115 High Street Woodend
www.bourkies.com.au

**BOTTLE
SHOP** LOCAL
BEER,
WINE,
SPIRITS

Cases from \$59.99
Full Holgate range
+ local gin & wine

Takeaway Meals
Order online

HolgateBrewhouse.com

Holgate Brewhouse
Taproom Bottleshop
on Anslow Street



HOLGATE brewhouse



By Patrick Eckel

Introduction

The growing season is well and truly under way, with the season to date being wet and generally cool. Fingers crossed for a moderate summer that will help set the cast for the future 2022 vintage wines from the Macedon Ranges. We have been starved of wine events in the region over the last few years, however pencil in 8–22 January for Summertime Fling, with events across a number of producers in the region that are sure to make up for lost time. The reviews for this month come from a pair of high-flying sommeliers (Athletes of Wine) and a producer that sources wines from both their estate on Mount Macedon, and nearby Heathcote for Italian Varietals (Mount Towrong).

2020 Mount Towrong Negroamaro

A light red in the glass, with aromatics of raspberry, red cherry and jasmine tea. The palate gives crunchy raspberry, tannins are fine, and the acid gives flow and length. The purity of red berry fruits to finish is quite stunning, with a subtle savoury iced tea-like influence that lingers.

Watch out Grenache, Negroamaro has the charm and delicacy more akin to Pinot Noir that many are searching for in warmer vineyard sites.

Rating: 94 | Price: \$30 | When to Drink: 2021–2024

2018 Athletes of Wine Vinero Pinot Noir

Some unrelenting viticulture in a dry year with no herbicides or pesticides, minimal fungicides and irrigation, with the wine then aged in a mix of new and old French oak.

The nose gives an earthen representation of dark cherry and rhubarb, with charcuterie notes and spice a background influence. The palate has tension and speaks of pine needles and taut dark cherry that has a minerality to it. There is an underlying savoury disposition to the fruit, however there is enough purity there to set this up for a long future in the cellar.

Rating: 92 | Price: \$42 | When to Drink: 2021–2031

MACEDON GARDENING

Garden design | Planting | Landscaping | Pruning
Hedging | Weeding | Mowing | Green removal

HIGH QUALITY, RELIABLE, AFFORDABLE

14 years experience in the Macedon Ranges. Highly trained staff, fully insured and available for regular care or one off jobs.

Ian and Melanie Matthews

0402 464 600

www.facebook.com/macedongardening

An indulgent wine retreat, because you deserve to get away.

Escape to the magnificent Macedon Ranges
for a luxurious weekend of wine & food.

Friday 12th - Sunday 14th November 2021

Join Wine Professionals
Caroline Bailey & Anthony Pieri
as they present the first wine
education retreat in Australia.

- Taste over \$3000 worth of wines from Macedon, Champagne and Burgundy
- Participate in a lively wine panel tasting and discussion guided by your hosts
- A cultured retreat where you will learn from the best-of-the-best
- Stay at the beautifully appointed boutique hotel Lancemore Macedon Ranges
- Enjoy an exquisite 5-course wine-matched dinner prepared by Executive Chef Travis Ray
- Be joined at the table by Winemaker of the Year, Michael Dhillon (Bindi Wines) and Young Gun 2021 Best Vigneron, Ben Rankin (Wilimee Wines)

A magical weekend overflowing with award-winning wine, local produce and laughter.

Want more information about what we will get up to?

Head to our website woodendwinestore.com.au and check out our retreats page where you can also book online. If you would prefer to talk to Caz and book direct call 03 5427 2228 or email caz@woodendwinestore.com.au

Prices include accommodation, all meals and drinks, wine program and guest speakers.
Tickets: Twin share \$1957.50 per person. Single share (Queen room) \$2175 per person.
Limited tickets available.

COVID POLICY: *In the unfortunate event the government imposes a lockdown for the weekend of 12th - 14th November 2021 and we are forced to reschedule, a full refund will be offered for those who are not able to commit to the new dates.*

WOODEND
WINE STORE



Five minutes for Five wishes for Five Mile Creek

Five Mile Creek is a special part of Woodend. It links the town, protects important threatened species, and is a beautiful place to walk and enjoy nature.

Woodend Landcare has been working for years to clear weeds, revegetate and enhance community access and facilities.

Now, in collaboration with Macedon Ranges Shire Council, we are creating a masterplan for the public land along Five Mile Creek through the town.

We want to hear from you about how to make the creek even better in the years to come.

Use the QR code below to access our community survey and share your five top wishes for Five Mile Creek. Survey closes 30th November.



**Be creative
and think big!**

For more information visit:
www.woodendlandcare.org or email
woodendlandcare@gmail.com

This project has been made possible with
Macedon Ranges Shire Council's Community
Funding Scheme.



Our Earth, our home

Take Five Minutes to tell us your Five Wishes for Five Mile Creek

Five Mile Creek is a special part of Woodend. It links the town, protects important threatened species, and is a beautiful place to walk and enjoy nature. Woodend Landcare have been working for years to clear weeds, revegetate and enhance community access and facilities along the creek.

Now, in collaboration with Macedon Ranges Shire Council, we are creating a masterplan for the public land along Five Mile Creek through the town.

We want to hear from you about how to make the creek even better in the years to come.

Please take five minutes to fill in our survey and tell us how you use the creek and your top five wishes for the future of Five Mile Creek. We're interested in your ideas for any or all parts of the creek from Romsey Rd downstream to Gregory St (near Buffalo Stadium).

You could consider improvements to the natural environment, facilities you would like to see and exactly where those should go, or fun ways to make the area more educational and engaging. We encourage you to be creative and think big!

Alternatively, visit the Woodend Library, where we have paper versions of the survey available and a big map to illustrate your vision. You can also email us your ideas. We can't wait to hear from you.

This project has been made possible with funding from Macedon Ranges Shire Council's Community Funding Scheme.



Free Black Gums for storm affected properties

Do you live along the floodplains of Five Mile Creek or Slatey Creek in Woodend? If so, your property is likely perfect habitat for the endangered Black Gum (*Eucalyptus aggregata*).

How to spot a Black Gum:

- Small to medium-sized woodland tree that grows 18–20 m tall
- Bark on the trunk and main branches is dark grey to black, deeply fibrous or flaky
- Glossy green leaves are alternately arranged along the stems and are 5–12 cm long by 1–2 cm wide
- White flowers are arranged in groups of seven and appear from November to May
- Grows on alluvial soils in cold, poorly drained flats and hollows

Woodend Landcare is aware that a number of Black Gums were lost during the June storm. We are keen to get a better idea of the impacts of the storm on Black Gum populations. If you have experienced Black Gum losses on your place, please email us with your stories.

We also have some Black Gum to give away – email us to express your interest (and quantities needed) and help to preserve Woodend's iconic tree.

For more information on Black Gum and to access the Five Mile Creek Masterplan Survey visit: www.woodendlandcare.org. The Woodend Landcare email is: woodendlandcare@gmail.com



Macedon Ranges
Hydronic Heating & Cooling



Hydronic Heating

- Radiator panels
- Slab heating
- Wood fired boilers
- Heated towel rails
- Trench elements

Refrigerated Cooling

- Wall hung split systems
- Ducted units
- Cassette units
- Bulkhead hideaway units

M: 0418 128 584 E: info@mrhh.com.au
W: mrhh.com.au

KYNETON
EQUIPMENT & PARTY
HIRE

FOR ALL YOUR HIRING NEEDS
8-12 BEAUCHAMP ST PHONE (03) 5422 2311
KYNETON VIC 3444 FAX (03) 5422 2930

Email: kynhire@bigpond.net.au
website: www.kynetonhire.com.au

Holistic healthcare for women's health conditions with Chinese Medicine

Macedon Chiropractic

Georgia Livingstone, who has recently joined the team at Macedon Chiropractic, is a qualified Acupuncturist and Chinese Medicine practitioner with over 10 years' experience working in the field of women's health and fertility. Drawing on her training, Georgia's approach to treating women's health issues and supporting women with their fertility is a holistic one. In her practice, every patient is assessed and treated as an individual, and it is her belief that with the correct treatment and adjustments to lifestyle, her patients can heal from their health issues and achieve better health in the long-term. She utilises several therapies in her practice, such as acupuncture, herbal medicine, nutritional supplements, cupping, gua sha and dietary and lifestyle advice to help her patients improve their health. Georgia sees patients for a range of issues, such as endometriosis, polycystic-ovarian-syndrome (PCOS), pre-menstrual syndrome (PMS), hormonal imbalance and menstrual cycle irregularities, and peri-menopausal-related symptoms, as well as fertility challenges, IVF support and pregnancy and post-partum-related issues. As with all health concerns in Chinese medicine, each patient's treatment will be individualised, based on a thorough health history and assessment. Georgia is passionate about helping women take control of their health and guiding them through the process, using the wisdom of Chinese medicine and a holistic-healthcare approach.

SUBMITTED BY ANNA KENNEDY

**Massage
Pilates
Remedial
Rehabilitation**
with Pamela Kell

By appointment
22 Goode Street
Gisborne
5428 1000
0408 093 098

Assisting in the repair and maintenance
of your body



**REFRESH,
REVITALISE
+ RENEW**

- Anti-Ageing Facials + Peels
- Microdermabrasion
- Cosmetic Injectables
- Micro Needling
- Massages
- Waxing
- Manicures + Pedicures

THE SPA SKIN+ BODY 5428 8800
3/31 Brantome St, Gisborne
www.thespa.com.au

We now offer
**Chinese Medicine
and
Acupuncture**




Meet
Georgia
Livingstone

Check
Website to
learn more

Book with Georgia

**MACEDON
CHIROPRACTIC**

(03) 5426 3945
26 Victoria st, Macedon
www.macedonchiropractic.com.au



Kosmac & Clemens
OPTOMETRISTS

- 🕶 Spectacles
- 🕶 Sunglasses
- 🕶 Cataract Assessments
- 🕶 Contact Lenses
- 🕶 Macula Screening
- 🕶 Kids Vision

Your LOCAL Optometrists

Just next to K Hub

5427 4577
www.kosmacandclemens.com.au

Julie Wacker is pleased to announce the opening of her new private practice in Woodend.



Counsellor | Life Coach

Renew. Restore. Rebuild.

- ADHD
- Anger Management
- Anxiety
- Behavioural Issues
- Coping Skills
- Divorce
- Family Conflict
- Life Transitions
- Stress
- Self-esteem

By appointment only.

jwcc.online

(03) 8007 2065

me@juliewacker.com.au

81g High Street,
Woodend VIC 344



Living with COVID

Julie Wacker, Counsellor

The COVID pandemic was and still is stressful, and it affects our daily life and our physical and mental wellbeing. Physical distance and isolation can make us feel anxious, stressed and worried. You can take some simple steps to help yourself in these difficult times and to support your mental wellbeing.

Pause, breathe, reflect: take a break from the news, including on social media.

Take care of your body by: trying to eat healthy; exercising regularly; getting plenty of sleep; avoiding excessive alcohol, tobacco and other substances.

Stick to a schedule: set specific times for your routines, like working, exercises, meals, sleep and entertainment. This can help create a feeling of certainty and consistency.

Time to unwind and try to do activities you enjoy: meditate, paint, craft work or gardening; be kind to yourself and others, help others to cope. By helping others, you can help yourself and your loved ones to feel less isolated or lonely.

When you feel overwhelmed, or the struggles are getting too big to manage on your own, seeking support from a professional such as a counsellor can be helpful.

Julie Wacker is a Dip Counsellor, NLP Life Coach, Laughter Yoga Trainer, speaker and teacher. With her trade, business, and management background, she has the ability to speak and adapt to many people and audiences. She has an awareness and intuition that allow her to really relate to people. Julie focuses on the client's ability to make changes for themselves, encouraging them to grow and evolve. With many years of experience, she now offers her services also here in Woodend.

You can reach Julie on (03) 8007 2065 or via email me@juliewacker.com.au.

If you need immediate help or are in danger, call Triple Zero (000) for emergency services.

Telephone helpline - Lifeline (call 13 11 14) offers immediate mental health support.

SUBMITTED BY JULIE WACKER

Imagine a world without violence

Wednesday 25 November is the International Day for the Elimination of Violence Against Women, and 10 December is Human Rights Day. The 16 days that begin and end on these dates are recognised internationally as the '16 Days of Activism' to prevent violence against women.

This is not just an issue in other places and other nations. In Australia, on average, one woman a week is murdered by her current or former partner; in fact, intimate partner violence is the leading cause of death, disability and illness in Australian women aged 18-44 years.

This year, the Zonta Club of Kyneton is working with several other local community organisations, through the Macedon Ranges 16 Days of Activism working group, to raise awareness of gender-based violence, to challenge discriminatory attitudes, and to encourage community-based support for those living with violence.

Bystander action will be the focus of print media and social media releases being prepared by the Zonta Club. The 16 Days working group has organised an online workshop, 'Introduction to Bystander Action', to be delivered by Women's health Loddon Mallee. Public libraries across the Macedon Ranges will partner with the Zonta Club of Kyneton to create displays that focus on prevention of violence against women.

On Wednesday 25 November, wear orange, and say NO to violence against women.

SUBMITTED BY RONDA WALKER, ZONTA CLUB OF KYNETON

LOCAL EMPLOYMENT OPPORTUNITY

Aged Care Worker required to provide personal care and companionship in a **private home in Woodend**.

Your care and assistance will enable an elderly couple to stay in their own home.

Part time hours in a friendly, comfortable environment.

To discuss this opportunity, please contact Rosemary on 0419 372 629.

KERRIE GASKIN

JEWELLERY CONSULTANT
Qualified Gemmologist
Diamond Grader

Engagement Rings
Remodels, Repairs

0403 128 757



The study of gemmology is the scientific study of gemstones, which allows gemmologists to identify and describe whether a gem is natural, synthetic (man-made) or treated. Kerrie is also qualified in diamond technology, which enables an understanding of a diamond's genesis to the mine and from the mine to the marketplace, as well as of identification and handling skills. This qualification secured Kerrie a job with a respected diamond trader for many years.



Kerrie Gaskin Jewellery

Third generation Macedon Ranges local Kerrie Gaskin regenerated her full-service gemmology business from her home in Woodend during 2020's COVID lockdown. Kerrie is well known throughout the Ranges, having formerly run her own jewellery store on High Street in Kyneton.

Born and bred in Kyneton, Kerrie remembers growing up in a town that was much smaller than it is now. After graduating from Kyneton High, Kerrie moved to Melbourne and landed her first job in merchandising for Kmart, demonstrating a keen eye for design early in her career. A few years after she began working for iconic Australian brand Prouds Edmonds Jewellers. In this role, her love for the trade flourished, and she ended up working as a manager at the company for some time. After this she began working for respected gemmologist Morris Rubenstein, and it was this role that set her on the path to studying gemmology.

After a few years of international travel, Kerrie got married and had two children with her husband local carpenter, Paul Gaskin. In 2012, they returned to Woodend after living in Queensland's Mission Beach for four years.

These days, Kerrie's business is a full-service gemmology and jewellery consultancy that harnesses her years of experience in the field. She offers repairs, remodels, engagements, weddings, and bespoke designs. Kerrie works alongside a highly experienced jeweller, who collaborates with her on all design aspects to provide the perfect replica of the client's vision. Her consultancy is a full range bespoke service that provides quotes based on service requirements.

**BEAT THE COLD
INSTALL GENUINE
DOUBLE
GLAZING**

INTO EXISTING TIMBER WINDOWS

**REDUCE UP TO
70% HEAT LOSS**

www.macedonrangesglass.com.au



MACEDON
RANGES
GLASS

MRG

GLASS REPLACEMENTS, SHOWER SCREENS, SPLASHBACKS, MIRRORS & PET DOORS

macedonrangesglass.com.au
estimating@macedonrangesglass.com.au

6/5 Ladd Rd New Gisborne Ph 5428 2899
89E Piper St Kyneton Ph 5422 1724



Spring - Spring - Spring

- » fertilisers for the garden
- » lawn seed and feed
- » milk and bottles for new born livestock
- » chick starter pellets
- » horse feed for foals and feeding mares
- » straw for bedding
- » seedlings and seeds

free local deliveries - 5427 2753



**WOODEND
PRODUCE STORE**

31 Brooke Street
Open 7 days

Country Living Covered

Remembrance Day 11 November

Remembrance Day in Australia commemorates the service and sacrifices of our armed forces and civilians during times of war.

At the 11th hour of the 11th day of the 11th month, which marked the end of World War I in 1918, we pause to honour their memory. It is an opportunity for all of us to reflect on those who died or suffered in all wars and armed conflicts, as well as saluting those who have returned home safely.

Solemn services are held throughout the country with a minute's silence observed, wreaths laid, and the Last Post played by a bugler.

This tradition teaches our young people the values of courage and resilience, and the contribution our troops have made to enable us to enjoy the freedoms that many of us take for granted.

Lest We Forget

An update from the RSL

Remembrance Day falls on 11 November each year. Unfortunately, we will not be able to hold a community service due to COVID restrictions at this stage. Please take time for a minute's silence at 11am wherever you are, to acknowledge those that have given their lives for others.

The RSL will have poppies available for sale at Coles prior to the 11th, so keep an eye out for our volunteers and pick one up and wear it with pride. We will have contactless payment options available.

Our focus coming out of the COVID restrictions is to have more activities in our spacious outdoor area for members and the community to socialise safely and support each other through interaction and conversation.

The indoor and outdoor area is available for community hire and use subject to COVID restrictions at the time. Under the restrictions at the time of writing, ten people inside and thirty outside can be accommodated, which may be what you need for a family or community gathering under these tough times.

The RSL is open for seated service for drinks and companionship, subject to restrictions of the day, on Thursdays and Fridays from 5pm until 7pm. Check what restrictions are current at the time you wish to visit.

There are no plans to open the bistro in the next couple of months, but patrons coming in for a drink are welcome to bring takeaway food from other businesses. Our focus is to provide a place for community contact and conversation in a relaxed safe environment. As the weather improves, we will also put up the jumping castle (COVID restrictions permitting).

Remember to wear a mask, unless seated and drinking, maintain a safe distance and scan in. If you are not feeling well, please do not attend the RSL and follow the guidelines for COVID testing.

Please contact the RSL if you are aware of any Veterans or Veteran families who may need help or assistance. We have Veterans from recent conflicts in our community. They may need our support and mateship as well. admin@woodendrsl.org



U3A Kyneton Visits 'Stonefields'

Following days of cold winds, intermittent showers and no sunshine, Tuesday 12 September dawned fine and sunny. This was the day of the long planned and awaited Kyneton U3A excursion to Stonefields garden in Denver. Thirty fully COVID vaccinated and masked U3A members arrived at Stonefields at 1.00pm. Keeping COVID distance, and armed with garden maps, members proceeded on their self-guided tour of one of Australia's finest private gardens.



The property of twenty-five acres was purchased as a bare paddock by renowned landscape designer Paul Bangay some seventeen years ago. Since then, five acres has been transformed into a magical formal garden, framed by a park featuring ancient eucalypts and cypresses. The remainder of the property is home to Paul's herd of rare breed British White cattle.

Entering through a cascading grove of crab apples in full spring flower, we toured the white garden featuring tulips in glorious bloom, the entry courtyard with its rivulet and axis to the main house and the rose garden, blue borders, the woodland, lilac walk and parterres featuring flowering perennials.

The afternoon concluded with Devonshire tea at the Glenlyon Hall, catered for by Kyneton Community House.

For further information regarding U3A Kyneton visit our website at www.u3akyneton.org.au

SUBMITTED BY KYNETON U3A

SUBMITTED BY HOWARD BURVILL, SECRETARY, WOODEND RSL SUB-BRANCH



THE NEW WOODEND STAR | 29 |

TERRY'S GROUND CREW

0400 909 303

TGC'S CHECKLIST ✓

- Landscape projects
- Fire prevention cleanup
- Large scale mechanical raking
- Paddock slashing
- Driveway renovation
- Confined space excavation
- Gorse and blackberry removal
- Mowing and brushcutting
- Window cleaning
- Gutter cleaning
- Pre-sale property preparation
- ALL THE HARD STUFF**

FAST RESPONSE

www.terrysgroundcrew.com.au



*No time...too much to do...call the crew
Enjoy your precious weekends.*

Woodend Self Storage (Vic) Pty Ltd



We have 110 storage units
in 5 different sizes to meet your needs.

Trailer hire available.

Affordable prices.

7 day accesses.

Insurance available.

Contact Leonie Barker on 0413 869 583 or
www.woodendselfstorage.com.au for a quote.

Upgrades to boost road safety for Macedon Ranges



Drivers, cyclists, and pedestrians in the Macedon Ranges will soon have a safer journey on Black Forest Drive, with significant upgrades along the popular route expected to start next year.

Feedback from the Macedon Ranges community will be used to prioritise intersection upgrades and the location of pedestrian and cycling improvements.

The upgrades are in response to community concerns about safety on the road and a crash history that includes four fatalities and 31 serious injury crashes between 2001 and 2020.

The Department of Transport has consulted extensively with the community, including local emergency services, as it plans the safety upgrades.

With ongoing COVID-19 restrictions, more than 70 participants tuned in to an online webinar on October 5. They were presented with information about the project and had questions answered by Department of Transport staff and local emergency services representatives.

Loddon Mallee Department of Transport Director Melanie Hotton thanked all those who took part in the webinar and said staff would continue to engage with the community and answer questions.

“We know that improving the safety of this section of road is important to the local community, and we had more than 200 questions from the local community at the webinar,” Ms Hotton said.

“We’re continuing to engage with the community on intersection upgrades and the location of pedestrian and cycling improvements on Black Forest Drive to ensure any changes meet local needs and priorities.”

The project, a response to the significant crash history, will include turning lanes and intersection upgrades, an on-road cycle lane, a wide centre median and safer pedestrian crossing points. The road will also undergo resurfacing, and new street lighting installed where required.

“We want everyone to arrive home safely, and these road upgrades will mean a much safer environment for all users of Black Forest Drive,” Ms Hotton said.

Before construction commences, environmental and cultural heritage assessments will be undertaken. This project is thanks to a \$6 million funding commitment from the State Government in the 2021/22 Budget.

Member for Macedon Mary-Anne Thomas said the Macedon Ranges is expanding with more people making the move to the region.

“Our region is expanding, and we need to prepare for this continued growth – Black Forest Drive serves as an important connection for our communities, so we must look at the best options for this upgrade.”

“We’re constantly planning for the future of our transport network, and we must hear from drivers, cyclists and pedestrians who use Black Forest Drive in this round of community engagement.”

The proposals come after years of feedback, safety assessments and far too many crashes.

Once complete, not only will Black Forest Drive be safer for the 8300 drivers who use this road every day, but on-road bike lanes will improve safety in one of the area’s popular cycling routes.

Keep track of these works, visit regionalroads.vic.gov.au, search Black Forest Drive.

Green Sport Action: Become one of the New Joneses

On 8 October the UN Human Rights Council recognised for the first time that having a clean, healthy and sustainable environment is a human right.

Sustainable and healthy environments where young people feel safe, engaged and welcome cannot be underestimated as we aim to build back better post pandemic and meet world environment targets for a better climate future.

Healthy and safe environments with strong resilient communities can offer physical activity and sport to more people more often, helping individuals and whole communities look after their health and wellbeing.

Sport and community groups are important to the social fabric of our communities, as they are full of community leaders and change makers.

Did you know that it is athletes, actors, musicians and singers who have more impact over our choices than politicians, writers and scientists?

The New Joneses is a social media campaign that delivers 10 messages of change that can have a big impact on the health of our planet, its wildlife and people. Messages are delivered by the likes of Neville Jetta, Dr. Anika Molesworth and Stephen Curry.

AIRPORT & CITY TRANSFERS

PRE-BOOKED at a FIXED PRICE

NO SURCHARGES - NO BOOKING FEES - NO TOLLS



Your local driver servicing
the Macedon Ranges

0468 347 742

www.sunrangeshirecars.com.au

Visit www.thenewjoneses.com and become one of the ever-increasing “New Joneses” of sport who are joining the movement for a better climate future.

The clips are free to use and link in your own socials and are a fun and light-hearted way to engage your club in action.

#GreenPlanetSport #NewJoneses #Purposedriven
#sport #changemakers #planet #people #health

Need more ideas? Contact me at annabel.greensports@gmail.com, follow me @a_bella_life or check out www.greenplanetsport.com.au

SUBMITTED BY ANNABEL SIDES

Read us online:

www.newwoodendstar.com/view

ADVERTISEMENT

**RICHARD
WELCH**
LIBERAL FOR McEWEN



RichardWelchMcEwen



RichardWelch.com.au



Rangers progress key works at storm-affected parks

As the days grow warmer and spring wildflowers start to bloom across our landscape, Parks Victoria is encouraging visitors to prioritise their safety, and to respect nature and rangers who are continuing to clear parks and reserves affected by severe winter storms.

Rangers are working daily with professional arborists and skilled crews to identify and clear thousands of hazardous trees and tonnes of debris from popular walking tracks and roads across the state, while excavators are aiding crews to move felled and heavy stumps. Restoration work to fences, steps and bridges remains extensive, with flooding and soil erosion at some sites increasing the complexity of repairs. While extended closures within the Dandenong and Macedon Ranges remain essential for public safety, with popular sites such as the 1000 Steps and parts of Macedon Regional Park requiring long-term planning, this critical work has led to a staged re-opening of several visitor experiences across the state.

Always remember that the natural environment can be unpredictable. Please plan ahead and follow current COVID-19 guidelines, as well as the directions of closure signs and local rangers who are working to keep you safe.



Credit – Wayne Williams



Photo Credit – Jacque Quaine

Balancing removal and retention

Victoria's parks not only provide spaces for people to enjoy; they protect important habitat for wildlife. Though fallen trees and woody debris can pose a safety risk to visitors, they also play an important role in park ecosystems.

Spring is a particularly special time of year for parks – wildflowers are blooming, trees are blossoming, and many native animals are bringing their young into the world. Crevices under logs and hollows in trees provide safe places for mammals, reptiles, birds and invertebrates to live and are the perfect place to protect their young from predators. Fallen timber and trees also have value far beyond basic shelter, hollows within them providing food resources, erosion control and recycling nutrients in the ecosystem as they decay.

Parks Victoria is taking careful consideration during recovery works to ensure the balance between the removal of hazards and retention for environmental benefits.

At newly opened sites, please do not wander from cleared roads, tracks or visitor areas. Bushland areas away from key sites are not routinely assessed or treated for hazardous trees. Leave fallen or felled wood and logs where they lie.

If you have concerns about the safety of a tree on land managed by Parks Victoria that may impact your property, please contact us on 13 1963 to discuss. For clean-up support on residential and private properties, please visit: <https://www.vic.gov.au/storm-clean-up-program>

If your favourite park is closed, visit Places to See for alternative places to visit.

For the latest information on which parks remain closed, visit the Safety in Nature page, or for detailed information and maps on track closures, look at the change of conditions on individual park pages.



SUBMITTED BY DRAGANA MRKAJA PARKS VICTORIA

Read us on issue
www.issuu.com/newwoodendstar

La Roche Technical Solutions

Technical Writing Services



- Process Design & Documentation
- Workplace Procedures
- Training Design & Delivery

Peter Lewis

Managing Consultant Email: laroche technicalsolutions@gmail.com

Mob: 0400 620 994

Thinking of selling in Spring?

Now is the time to talk to one of our dedicated agents to discuss getting your property prepared for the Spring Market.

Clearance rates in the Macedon Ranges continue to be at an all-time high and we have a database of qualified buyers who are ready to buy in the area.

Call our Agents now for an obligation free appraisal on your property.

Are your tenants not paying rent?

Are your routine inspections not getting completed?

Is maintenance on your rental investment not being looked after?

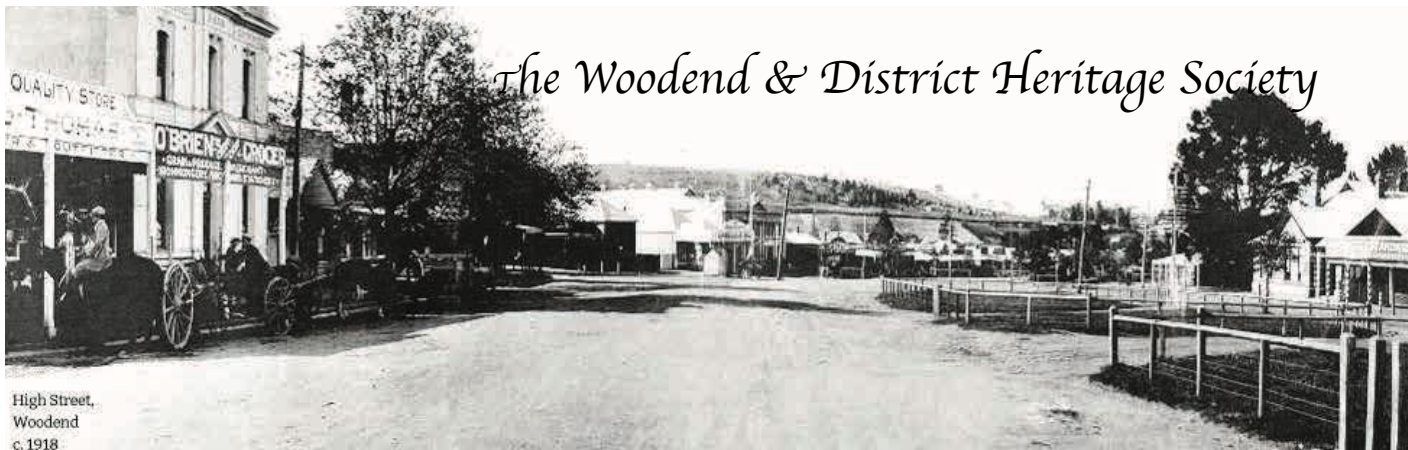
If your property is being managed in this way and you are not happy with your agent did you know you can change agency?

With our experience and prompt actions, knowledge of the new legislation we can get these issues up to date for you, and will handle the changeover on your behalf at not cost to you. Getting that rent back on track and managing your property the best way!

Contact one of our Property Managers to chat about your property.

Marissa Boyd	0448 271 155
Tara Hoyle-Service	0448 271 333
Madison Stewart	0448 271 110





High Street,
Woodend
c.1918

Memories of Marian Baig

Marian Baig, the former owner of the Woodend Pantry and Marian's Kitchen, died 27 August in Smithton, Tasmania. Marian was passionate about healthy food. The Woodend Pantry was a popular health food shop which Marian opened after moving in the 1980s from Melbourne where she had owned the Albert Park Health Food Shop. She started Marian's Kitchen to wholesale her products.

The first was Drunken Peaches, which she bravely took to David Jones, who placed a large order. She then introduced a tomato pickle and a peach pickle. David Jones and Myers bought both. In 1995, she sold the shop to concentrate on Marian's Kitchen. Marian had no training in cooking but loved it. Being married to an Indian citizen, she developed a love of Indian food and experimented with spices until she developed the tastes she wanted – curries which were not too hot – and sold them locally.

Marian was born in Hungary in 1937 and moved to Australia with her family in 1949. After Bonegilla, they lived in Benalla, where Marian went to school. As migrants, her parents had to work at whatever the government wanted for the first two years. Her father ran a poultry farm at one stage, which led to teaching animal husbandry at Longerenong Agricultural College.

Her mother had matriculated and, with no extra training, taught physical education at Horsham High School, which the family found quite amusing. After school, Marian flew with TAA before joining Myers, becoming a personnel officer until she married.

Years later, Marian and her two children, Chris and Jenny, settled happily in Woodend. In 2018, Marian and Jenny set off on their new adventure — Tasmania.

SUBMITTED BY JANE HOLTH

Annual General Meeting

of the Woodend & District Heritage Society
at 10am on Wednesday 1 December 2021
at The Old Courthouse, Forest Street, Woodend



Marian loved parties. Here she celebrates her 80th in her Woodend garden. Photo: Peter Monk



Marian's favourite pastimes were collecting shells on Smithton's pristine beach and discovering the wonders of the Tarkine forest. Photo: Jenny Baig

Do you know of the Eveans family?

If anyone has any information regarding the Eveans family that have lived in Woodend from the 1900's and possibly earlier, especially Daisy, Violet May and any siblings. Violet May Eveans married Frederick Lockyer in Woodend.

I am trying to piece my family history together.

Please contact Pamela on 0407 099 313.

LOOKING TO RENOVATE?



TOM WILSON

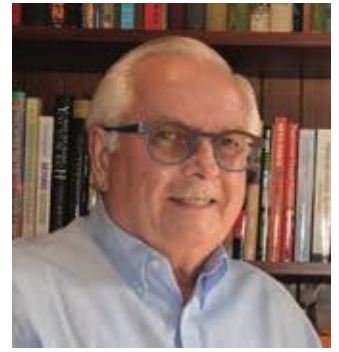
Senior Project Architect
Period Home Specialist
ACA Registered Practice

E: info@tomwilsonarchitect.com.au

P: 0411 464 838 W: tomwilsonarchitect.com.au

Tom Wilson, award-winning architect

Tom Wilson, known for his work in renovating period homes, has recently settled in Woodend and is bringing his architectural practice here. The beauty of the region lured him here and he is enjoying the new environment. Apart from good design, Tom also has a great love of vintage cars.



Tom has specialised in renovating period and heritage homes for over 49 years. His practice has worked with Edwardian, Victorian, and Federation homes. A deep understanding of architectural heritage and aesthetics allows Tom to maintain a balance between existing traditional architecture and the new modern-day standard additions.

Tom's passion for detail is evident in all his projects. His aim is to ensure the outcome of each project matches the client's desires and expectations. The renovations not only look beautiful, but they are beautiful spaces to live in. He has developed award-winning sustainable home solutions and highly-esteemed renovation architecture projects in Melbourne and internationally. Some of these projects have led to prestigious awards.

Tom provides complete home extension and renovation solutions for your home, from providing full concept design to obtaining all necessary approvals, to inspection during final construction.

The building industry has a reputation for being somewhat litigious. Tom believes an architect brings a number of essential safeguards to your project, principally through the Australian Institute of Architects-endorsed contracts.

If you are looking to enhance your period home, to give it a new life without losing its character and traditional architectural features, Tom Wilson can help. To contact Tom and discuss your project, ring him on 0411 464 838 or go to www.tomwilsonarchitect.com.au

SUBMITTED BY TOM WILSON

Have Your Say on Greater Western Water's Draft Community Engagement Framework

Through sharing your needs, experiences and ideas, you can help Greater Western Water understand what is important to you and help them provide better services across the region.

The new water corporation has just developed their first Draft Community Engagement Framework and is asking the Woodend community for their feedback.

The framework provides details on how Greater Western Water will consult with their communities and customers into the future.

To provide feedback on the Draft Community Engagement Framework, visit Greater Western Water's Your Say website at yoursay.gww.com.au

The site offers lots of options for providing input, including a quick poll, survey or 'sharing a story'. You also have the option of providing an audio recording in English or another language.

Feedback can be provided up until 22 November.

In December, Greater Western Water will provide updates on what they learned from the community and how their input helped shape this piece of work. The final framework will be shared publicly in the new year.



SUBMITTED BY JESSICA JORQUERA

Langley | McKimmie

Chartered Accountants

- Business Advisory
- Accounting and Taxation Services
- Superannuation
- Audit and Assurance
- Bookkeeping Service
- Corporate and Administrative Services

17 Nicholson Street, Woodend

T: 03 5427 8100 | E: info@lmck.com.au

www.langleymckimmie.com.au



We should be very proud of our CFA volunteers



CFA volunteers across the state stand by their Victorian communities 24 hours a day, 7 days a week, 365 days a year. Together, we are building a safer and more resilient Victoria standing united with our communities against the threat of emergencies and other natural disasters. You should be very confident and proud of your local CFA and CFA volunteers.

CFA volunteers have stood by Victorians during their darkest days. Just look at the dramatic fires across Australia in recent years, and going back over half a century, where the vast majority of brave fire fighters were actually volunteers, including a large number of Woodend CFA members.

Yes, we are volunteers and not paid, but we are also highly trained and highly professional.

As Victoria's largest, and most diverse fire service – CFA's 50,000+ volunteers selflessly respond to more than 33,000 events every year through 1200+ volunteer brigades – within our community, within our state, interstate and even overseas.

We manage very diverse skill sets and are able to respond a wide range of emergency incidents: structure fires, grass fires, bush fires, industrial fires, HAZMAT incidents, road crash rescue, and other highly specialised incidents, including co-responding with Victoria Police, Ambulance Victoria and the SES to emergency incidents.

Our members undertake extensive training to continually upgrade their skills and have continued essential firefighter training and skills maintenance through the COVID pandemic under very strict safety guidelines.

Plus, there are also a significant number of important volunteers who are not directly involved in responding to emergencies, but still play a vital role in ensuring the brigade runs smoothly and efficiently. At Woodend, they include our Secretary, FEM Manager, and those involved in the operation of our new Rehab Unit, and in management and maintenance.

CFA volunteers are also extremely community focused. We are part of our communities, and we engage with our communities to ensure they are prepared and ready for fire and other emergencies all year round. And being part of a community means that also comes with valuable local knowledge.

We are also involved in other important community activities, such as the annual Good Friday Collection for the Royal Children's Hospital, where we have raised nearly \$300,000 over the years, and the Santa Runs at Christmas.

Victoria's emergency management volunteers actually contribute more than \$2.5 billion dollars of value to Victoria every year. The respect and trust of the Victorian community in CFA and CFA volunteers is well earned over many decades of service and built on actions and deeds.

As Captain of the Woodend fire brigade, I am extremely proud and privileged to work with an amazing group of dedicated, highly qualified and unpaid 'professional' volunteers who do a superb job to serve and protect our community, as we have done for the last 125 years and will continue to do so.

For further information, contact the Woodend CFA on 5427 2356, or visit the station in Urquhart Street. Follow us on Facebook, or you can visit our website: www.woodendcfa.org.

SUBMITTED BY MIKE DORNAU, CAPTAIN WOODEND CFA



Prepare your property
to reduce fire risk



Paul Chapman

PROPERTY MAINTENANCE
RESIDENTIAL & COMMERCIAL

Qualified carpenter and
Woodend local

- ➔ interior and exterior carpentry
- ➔ renovations and extensions
- ➔ pergolas / decking
- ➔ fencing
- ➔ general property maintenance
- ➔ improvements (residential and commercial)

CALL PAUL
0413 871 938

Paul Chapman
PROPERTY MAINTENANCE
RESIDENTIAL & COMMERCIAL

Community volunteer action grants announced

The Upper Campaspe Landcare Network in the state district of Macedon has received \$24,000 in funding as part of the Community Volunteer Action Grants program, aimed at supporting communities and community organisations and volunteers across Victoria and in Macedon district.

Member for Macedon, Mary-Anne Thomas congratulated the successful grant recipient. The Community Volunteer Action Grants program provides funding to a variety of local community and volunteer groups including local Landcare groups and networks, Committees of Management and Traditional Owners.

The Upper Campaspe Landcare Network's Pollinator Corridor Project is designed to engage and empower the community within the Upper Campaspe catchment in an ongoing, cooperative and interactive program that encourages participation in the enhancement, establishment, and preservation of native pollinator habitat through the creation of pollinator corridors on private and public land.

The grants offer a range of positive biodiversity outcomes across the Macedon district and across the state, by assisting communities to conserve, rehabilitate, restore and protect Victoria's native flora, fauna and vegetation, and supporting community groups to increase and build their capacity to act for the environment.

"This project will assist in conserving, rehabilitating, restoring and protecting Victoria's native flora, fauna and native

EARTHMOVING SERVICES

Macedon Ranges

Driveways

Site cuts

Fallen tree removal

Licensed and insured

Matt - 0403297737

vegetation while addressing threats to biodiversity," said Ms Thomas. "It is fantastic to see this wonderful project receive funding, the Upper Campaspe Landcare community group in Macedon."

Previous funding has assisted community groups across Victoria to engage a total of 992 community members in conservation or improved land management, with a contribution from community members of approximately 23,515 volunteer hours.

The grants are spread across a range of geographic locations to align with the goals and targets identified in the Victorian Government's plan to improve our natural environment, Biodiversity 2037. This program of grants is part of the \$7.4 million Community Environment Grants package funded by the Victorian Government to support small and large-scale projects dedicated to preserving biodiversity and waterways in the state.

SUBMITTED BY KATE LEE

your place

Works like magic!

This month at Bradley's, we're excited about battery operated motors!

No, wait! We're serious. They're really good.

How many blinds do you have in your home?

If it's a 'windy' sort of place, there could be twenty or thirty blinds to wind up every morning and drop down at night, plus any other time during the day when you want to cut out the sun.

A battery-operated motor means you no longer have to do this. As well,

there are no unsightly, unsafe cords lying around.

There's a new generation of battery-operated motors just come out called Automate Wirefree Zero. (See, we knew you'd get excited!) The charge lasts for up to fifteen months before needing to re-charge. (The current average for most motors is six to eight months.) Simply charge it with a USB. The motor can also be connected to a solar panel, which obviously tops up the charge as it goes.

Another feature is the ability to connect to Google and Alexa through

WIFI and a hub so you don't even have to be home on hot mornings or cold nights to open or close your blinds. This makes the most of your insulation by keeping the heat out or in, depending on the weather and the season. The motor works on Roman blinds as well as rollers. Other products only service roller blinds. One motor costs \$320, which controls up to fifteen blinds.

Plenty of people have already caught the cord-free, wireless craze! We've been installing them on patios, in bedrooms and across entire houses.



Bradley's Curtains+Blinds

72 High Street, Woodend 3442

t 03 54272361

e sales@bradleyscurtains.com

w bradleyscurtains.com



Lawn Bowls, probably the world's most inclusive sport!

I recently attended a meeting organised by Bowls Vic, which covered a broad range of topics, including the future of our fantastic sport. One of the key findings of a detailed research study into the broad range of sports available today, was the Lawn Bowls was one of the most, if not the most, inclusive sports in the world.

Lawn Bowls is a sport that welcomes people of all ages, gender identity and all abilities.

Let's look at each of these in a bit more detail.

Lawn Bowls is played competitively by people aged from 10 to 100. It is amazing to play a pennant match where a 10-year-old or a teenager is matching it against a veteran of the sport. And all happening in a spirit of fun and harmony.

Lawn Bowls is played by people of all genders. Up until 2001, pennant competition was divided into Men and Ladies, but since then we have embraced open competition. And the sport is all the better for it.

The modern game of lawn bowls is more colourful and competitive

Lawn bowling in the 21st century is both colourful and competitive and is no longer the seniors' game that many people believe. In fact, most of the leading male and female players in the Australian 'Jackaroos' teams and in their 20s, 30s and 40s, with some players, like Kyneton's Chloe Stewart, being chosen successfully in the national team as a teenager.



There are also more fun versions of the game, such as barefoot bowls and Jack Attack, which is the bowling version of cricket's T20. The Woodend Bowling Club is always looking for new members, young and not-so-young.

Check out our Website and Facebook page

For more information, please call our phone number 5407 9220, visit our website at www.woodendbowlsclub.weebly.com. You can also follow us on Facebook.

SUBMITTED BY MIKE DORNAU, PRESIDENT WOODEND BOWLING CLUB INC.



Fiona Darling
Master Instructor & Mentor
Happy Horse Happy Life Program

- LESSONS • WORKSHOPS • COURSES
- REMOTE LEARNING OPTIONS

sevenkeyshorsemanship.com.au
0429 031 395 | sevenkeys@bigpond.com
 [horsemanshipmacedonranges](https://www.facebook.com/horsemanshipmacedonranges)

Horsemanship Coaching for Horses as Happy, Willing Partners



ARBORIST



Josh Nicholas | 0431 764 750
Professional Arborists servicing the Macedon Ranges
jueshuex@yahoo.com | thetreedavinci.com.au

CARPENTRY

Paul Gaskin
Qualified Carpenter
0438 440 986

Decks, Pergolas
Bathrooms, Renovations
& all your carpentry needs,
throughout the
Macedon Ranges
Free quotes



paulgaskin12@yahoo.com.au

SPACE FOR RENT

Available Space
\$50 per month

DRAFTING SERVICES



DESIGN AND DRAFTING SERVICE

Construction plans
Design concepts
Town planning
applications

With over 25yrs experience
servicing the Macedon Ranges and beyond

Brett Franke: Registered Building Practitioner
Call Brett 0408 054 472

HANDYMAN

HANDYMAN SERVICE

Servicing the Macedon Ranges
honest, reliable, friendly and local

Phone Peter
0431 252 477

Minor repairs Dripping Taps
Basic carpentry Gardening
Fence repairs Painting
Mowing Odd Jobs



HOME RENOVATION

HOME RENOVATIONS & MAINTENANCE

Specialising in
kitchens | bathrooms | pergolas and decks
general maintenance | prepare for sale
rental properties

RELIABLE - LOCAL - PROFESSIONAL
Call Mark now to arrange a free quote
Mob 0411 555 925

PAINTING



GEE'S
Painting etc.
Call Steven
0402 079 482

PAINTING



Aardvark Painting
ABN: 49 178 405 936

- All Painting Works
- Associated Repairs
- Discounts Available
- Call for a Free Quote

0488 094 186 / 0488 095 186
staff@apainting.com.au / www.apainting.com.au

PLUMBING

**Blocked Drains | Hot Water
Bathroom Renovation**
0431 138 101



*Local Plumbing Solutions
for the Macedon Ranges*
www.kennedysplumbing.com.au

PLUMBING AND GAS FITTING



Hot Water Units - Gas Fitting - Split Systems
Hydronic Heating - Rain Water Systems
Bathroom & Kitchen Renovations

Servicing Macedon Ranges - No job too small
Paul Murphy 0438 298 659

TAXI SERVICES



Crown Cabs

Available on the iPhone
App Store

ANDROID APP ON
Google play

DOWNLOAD THE CROWN CABS APP FOR YOUR NEXT RIDE

www.crowncabs.com.au
Bookings: 1300 12 13 14

TREE SERVICES



A&P Tree Services

- tree pruning / removal
- stump removal
- tree planting / transplanting
- rope & harness climbing
- confined space removal
- fully insured

Professional commercial & residential tree
maintenance, all work carried out by qualified
arborist

Call Anthony 0417 059 969

Read us on issue
www.issuu.com/newwoodendstar



CHINKA (HEP) STEEL
Solicitors

Monday to Friday 8.30am – 5.30pm
74 High Street, Woodend, 5427 2477

chinkasteel.com.au

Experience . Understanding . Commitment

FAMILY LAW CHILDREN
FAMILY LAW PROPERTY
FIXED PRICE CONVEYANCING
BUSINESS SALE & PURCHASE
INTERVENTION ORDERS
ESTATES & PROBATE
WILLS & POWERS OF ATTORNEY

Virtual Parenting Program at Sacred Heart College

Year 11 Health and Human Development students at Sacred Heart College are fortunate to be able to have the opportunity to participate in the Realityworks Handle With Care: Basic Infant Care program. The program is integral to one of the units of study which focuses on healthy and respectful relationships, parenting and prenatal, and early childhood development. The RealCare Baby is a computerised infant simulator (or virtual baby) which must be cared for and supervised by the student at all times. Just as in real life, the baby will cry and need to be fed, burped, rocked and have its nappy changed leaving students to tend to Baby's needs.

A small computer inside Baby is programmed to follow actual schedules of fifteen different newborns. Each day Baby will be on a different schedule. Baby may need care at inconvenient times, including when students might be sleeping, providing them with an opportunity to experience many of the responsibilities required as a caregiver of a new infant.

Students learn many skills through their involvement in the program; an understanding of the full-time commitment to child-care, persistence (getting through care simulation without quitting), how to keep Baby happy, the importance of caring for Baby and its belongings, as well as an insight on how others in the community respond to the mother/father and child. Incidences of poor care are recorded by Baby's computer, some of these

behaviours will produce intense crying which can be stopped by rocking - students soon learn to avoid these behaviours.

Parents and family members are able to assist the students during their time with Baby by providing emotional support and treating Baby as if it were real. While they are able to offer advice, the actual work of caring for Baby is left to the student.

Sacred Heart College has offered this opportunity to students for more than 10 years now and have always found it invaluable to students in this age group. Our most recent 'parents' have provided feedback on their experience below.

Molly C: Through the parenting program, I found that knowing what a baby wants isn't always what we think. Throughout the night, even when the baby is sleeping, the subconscious of not knowing when it's going to wake up, or whether they'll want a nappy change or be hungry, was probably worse than him crying or screaming. For me I've learnt that parenting is not something that just anyone can do and also that babies get cold way too easily.

Patrick B: The virtual parenting program was an eye opener to me. Harold (my baby) actually allowed me to sleep between 11-5 all the way through, which I am very proud of. It made me realise how hard parenting is, but it also made me look forward to it in the future. I feel as though my friends and family were very supportive throughout the whole process and offered help wherever possible.

Tessa F: The program showed me that there is a lot more responsibility and skills needed to care for a virtual baby. I had mine on medium mode, and it cried the majority of the night whilst sleeping most of the day. It was stressful trying to figure out why the baby was crying, and then try to quickly assist it before the crying got out of hand. By the end of the experience I began to wonder if I might ever actually want to have kids, as a robot was difficult enough to look after, but the virtual experience gave me a greater insight and far more knowledge about babies.

SUBMITTED BY JENNIFER BALDWIN



Learn. Care.
flourish

Choosing a school for your child?

Enrolment applications for Year 7, 2023 are welcomed.

Limited vacancies available for Years 8 - 12, 2022.

Join one of our Virtual Conversations for an opportunity to talk to College Principal, Dr Darren Egberts, and students to learn more about life at SHC. Details and bookings via the College website.

Contact the Registrar for enrolment enquiries.

